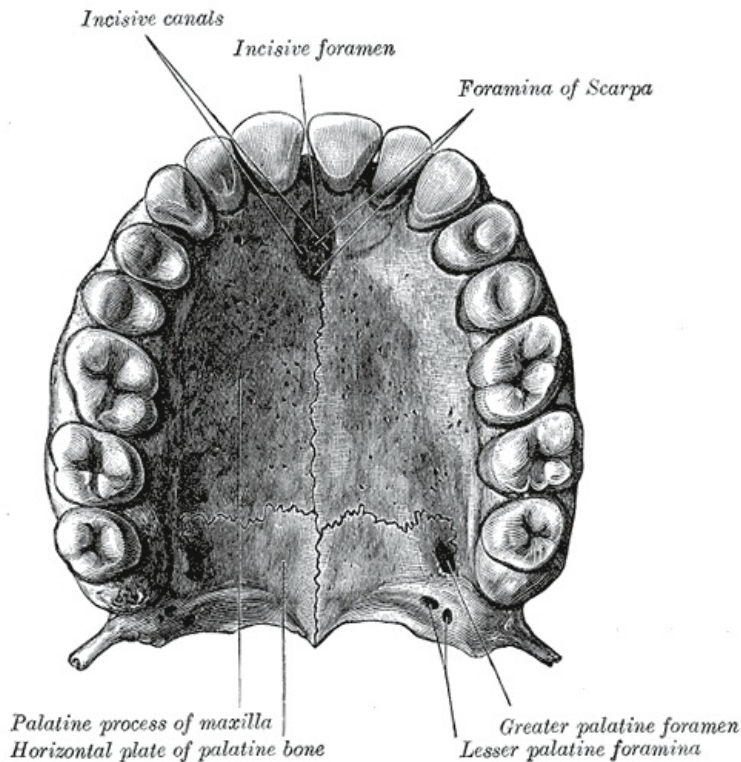


# Anesthesia for the foramen incisivum



It is a seductive anesthesia in the upper jaw used in dentistry.

The foramen incisivum is the roof of the papilla incisiva on the palate, which is located behind the upper first incisors in the midline. The canalis incisivus leading to the nervus nasopalatinus (from ggl. pterygopalatinum) results here.

## Extent of Anesthesia

Upper incisors, possibly a canine. A small triangular field of mucosa and periosteum behind the upper incisors (cusps).

## Performing anesthesia

We do not pierce the papilla, it is richly innervated. The injection site is immediately next to the palatine papilla, we guide the needle obliquely from the side, aspirate, apply a small amount of anesthetic (0.2 ml approx. 15–30 s)<sup>[1]</sup> until the papilla becomes numb.

## Onset of effect

approx. 2-3 minutes. <sup>[1]</sup>

## Complications

Complications are rare: hematoma, ischemia mucosa.

Note infiltration anesthesia is preferred in this area.

## Links

## Related Articles

Seductive anesthesia in HČ:

- Anesthesia at the infraorbital foramen
- Anesthesia at tuber maxillae

- Anesthesia for foramen palatinum majus

Seductive anesthesia in DČ:

- Mandibular anesthesia
- Anesthesia at the foramen mentale

## References

1. ŠČIGEL, Vladimír. *Lokální anestezie v praxi zubního lékaře*. 1. edition. Quintessenz, spol. s.r.o, 0000. 0 pp. ISBN 80-903181-4-2.

## References

- PAZDERA, Jindřich. *základy ústní a čelistní chirurgie*. 1. edition. Universita Palackého v Olomouci, 2007. 0 pp. ISBN 978-80-244-1670-0.