

# Adrenal gland - HE

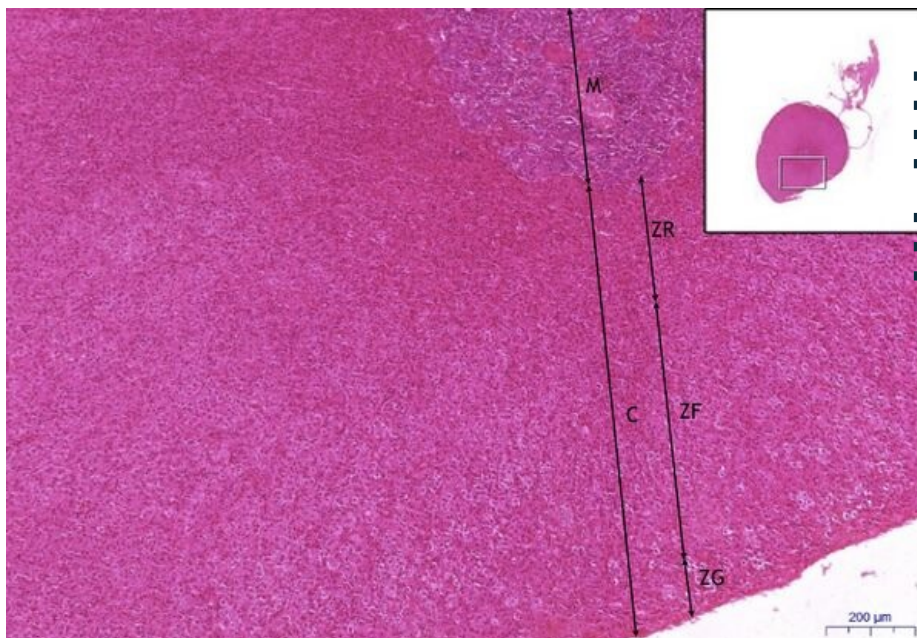
## Adrenal gland, HE 1,4x



### Adrenal gland:

- 1) **C** - cortex
- a) **ZR** - zona reticularis
- b) **ZF** - zona fasciculata
- c) **ZG** - zona glomerulosa
- 2) **M** - medulla
- 3) **T** - cords
- 4) **VP** - connective tissue capsule

## Adrenal gland, HE 5x



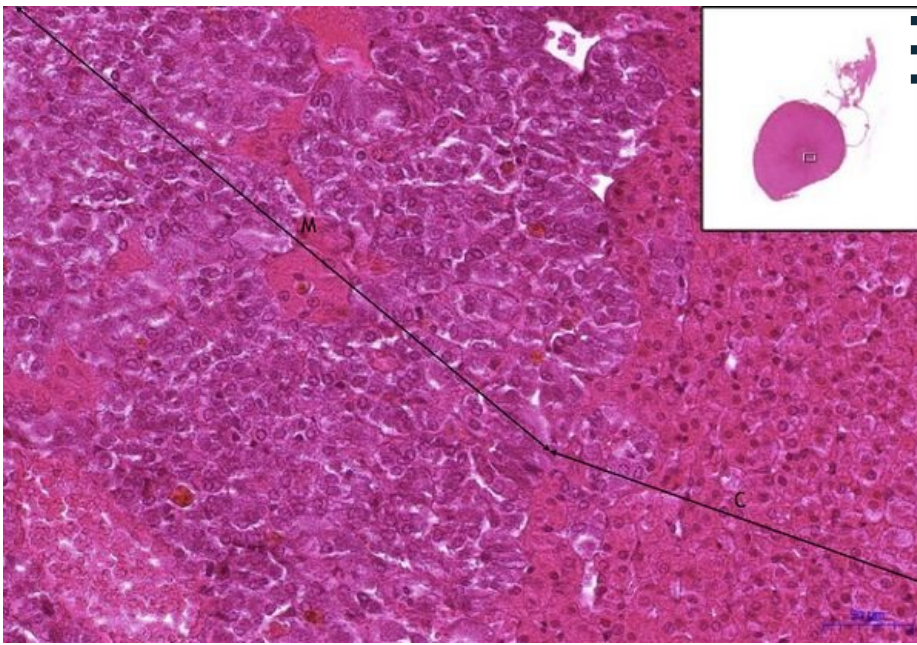
### Adrenal gland:

- 1) **C** - cortex
- a) **ZR** - zona reticularis
- b) **ZF** - zona fasciculata
- c) **ZG** - zona glomerulosa
- 2) **M** - medulla
- 3) **T** - cords
- 4) **VP** - connective tissue capsule

## Adrenal gland, HE 20x

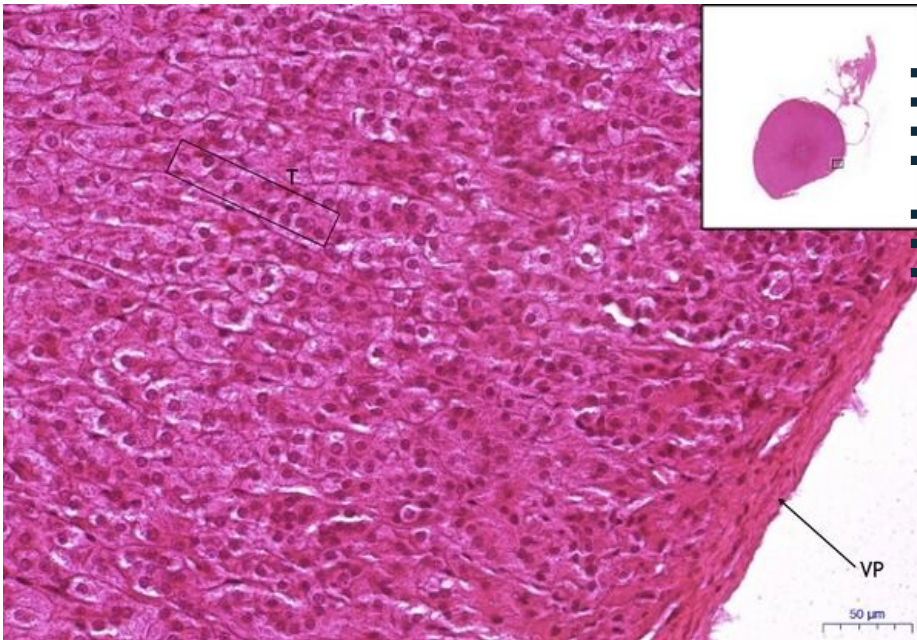
### Adrenal gland:

- 1) **C** - cortex
- a) **ZR** - zona reticularis
- b) **ZF** - zona fasciculata
- c) **ZG** - zona glomerulosa



- 2) **M** - medulla
- 3) **T** - cords
- 4) **VP** - connective tissue capsule

## Adrenal gland, HE 20x



### Adrenal gland:

- 1) **C** - cortex
- a) **ZR** - zona reticularis
- b) **ZF** - zona fasciculata
- c) **ZG** - zona glomerulosa
- 2) **M** - medulla
- 3) **T** - cords
- 4) **VP** - connective tissue capsule

## Navigation

### Navigation: Epithelial tissue

← Slide 17 | List of the slides | Slide 19 →