

Zygomatic Bone (Os Zygomaticum)

It connects the skeleton of the face with the wall of the neurocranium, forms the edge of the outer wall of the orbit and part of its lower edge. It plays a significant role in the shape and proportions of the face.

- Together with the projection os temporale, it forms the **arcus zygomaticus** - the zygomatic arch.
- It is connected to the processus zygomaticus maxilla and its two processes form another connection:
 1. **processus frontalis** - goes cranially and connects the cheekbone with the ala major sphenoid bones;
 2. **processus temporalis** - runs dorsally and joins the zygomatic process of the temporal bone to form the zygomaticus arc.

Holes

The second branch n. trigeminus, **n. zygomaticus**, enters and branches into the zygomatic bone.

- **Foramen zygomaticoorbitale** - on the orbital surface, n. zygomaticus enters the bone here;
- **Foramen zygomaticofaciale** - on the facial surface, the nerve branch of the same name emerges from here, i.e. n. zygomaticofacialis;
- **Foramen zygomaticotemporale** - gap of n. zygomaticotemporalis on the temporal side of the bone.

Links

Related Articles

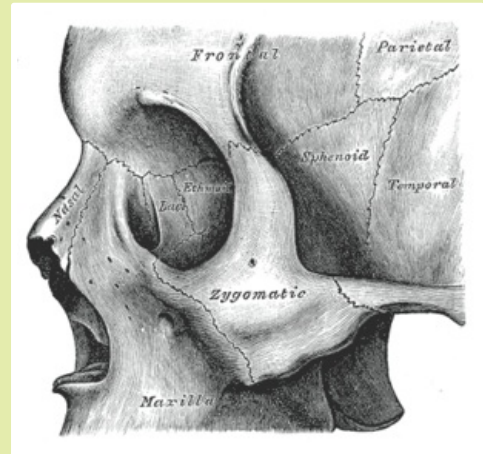
- Splanchnocranium bones

References

- ČIHÁK, Radomír – GRIM, Miloš. *Anatomie*. 2., uprav. a dopl. edition. Grada Publishing, 2002. vol. 2. pp. 470. ISBN 80-7169-970-5.

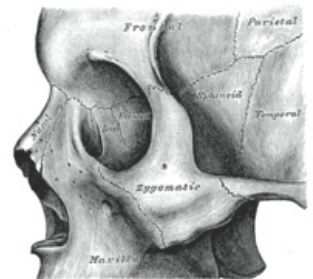
Template:Navbox - bones

[[Soubor:|225px|alt=]]

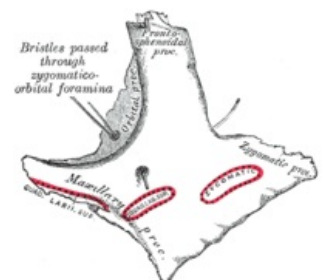


A02.1.14.001 (<http://www.unifr.ch/ifaa/Public/EntryPage/TA98%20Tree/Entity%20TA98%20EN/02.1.14.001%20Entity%20TA98%20EN.htm>)

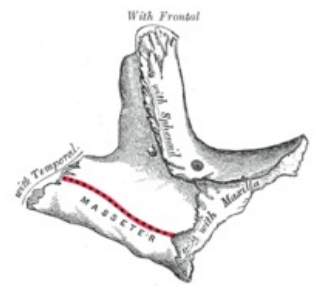
together with the os temporale forms the arcus zygomaticus



Zygomatic bone



Scheme of entry and exit of zygomatic nerve



Connection diagram with
surrounding bones