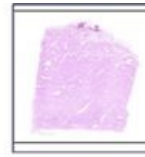
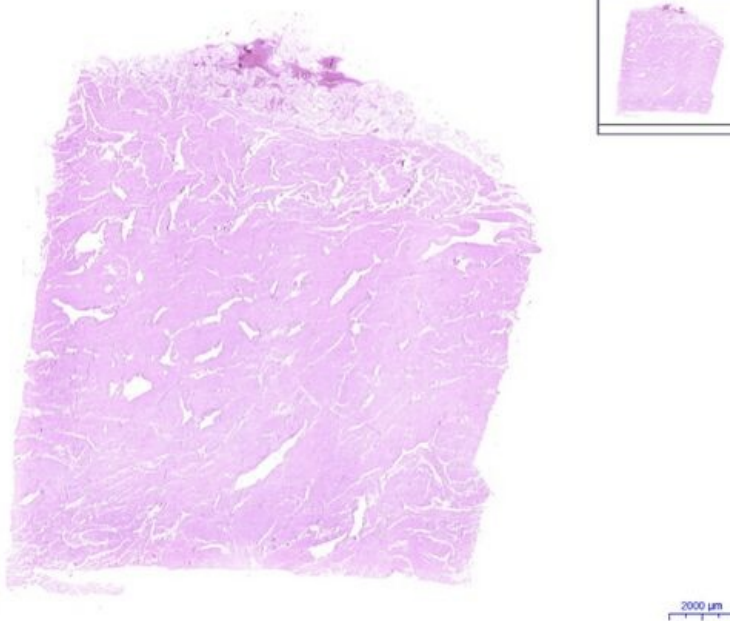


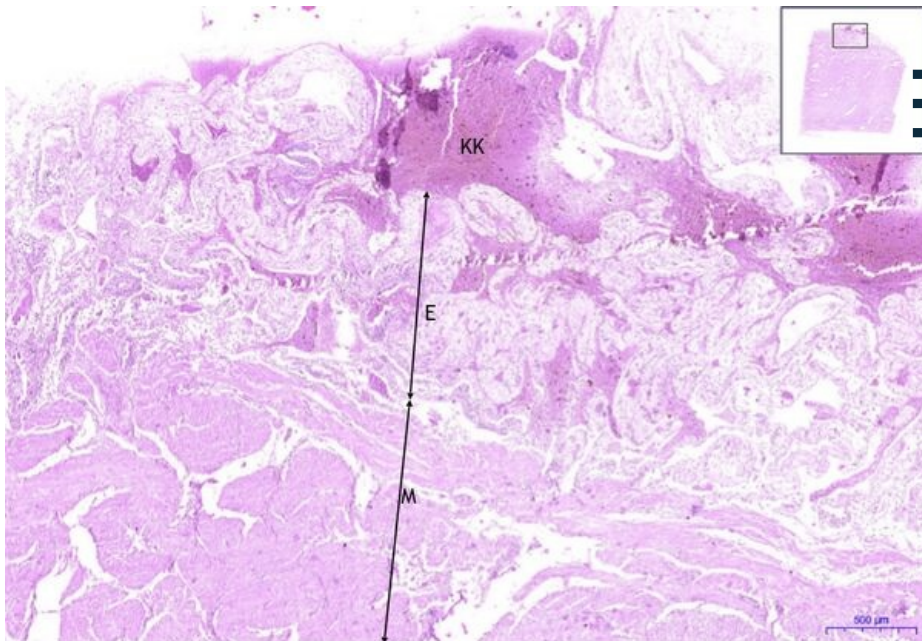
Uterus post partum - HE

Uterus post partum, HE 0,4x



Uterus post partum:

Uterus post partum, HE 2x



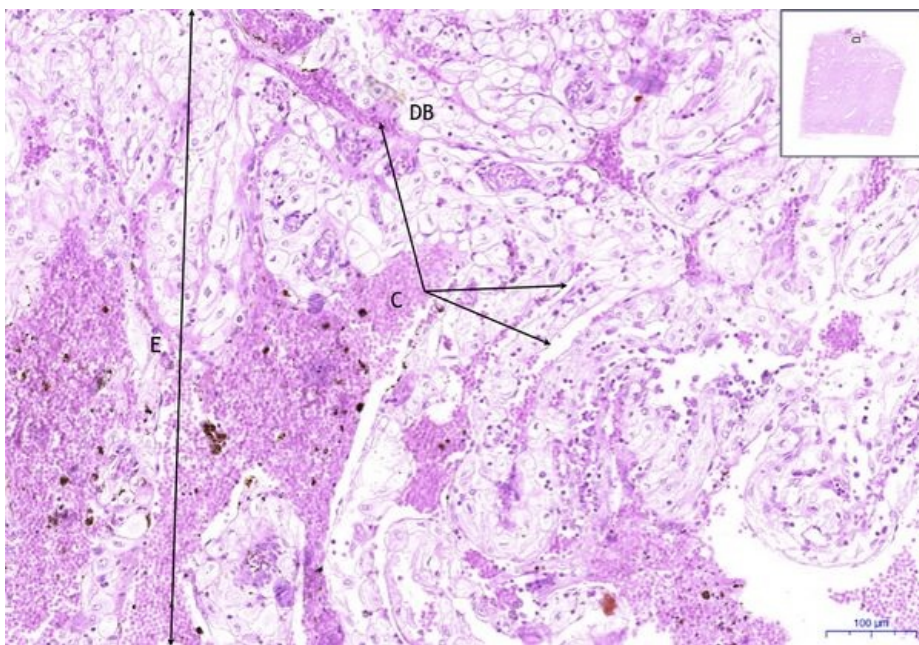
Uterus post partum:

- 1) **KK** - blood coagulum
- 2) **E** - endometrium
- 3) **M** - myometrium

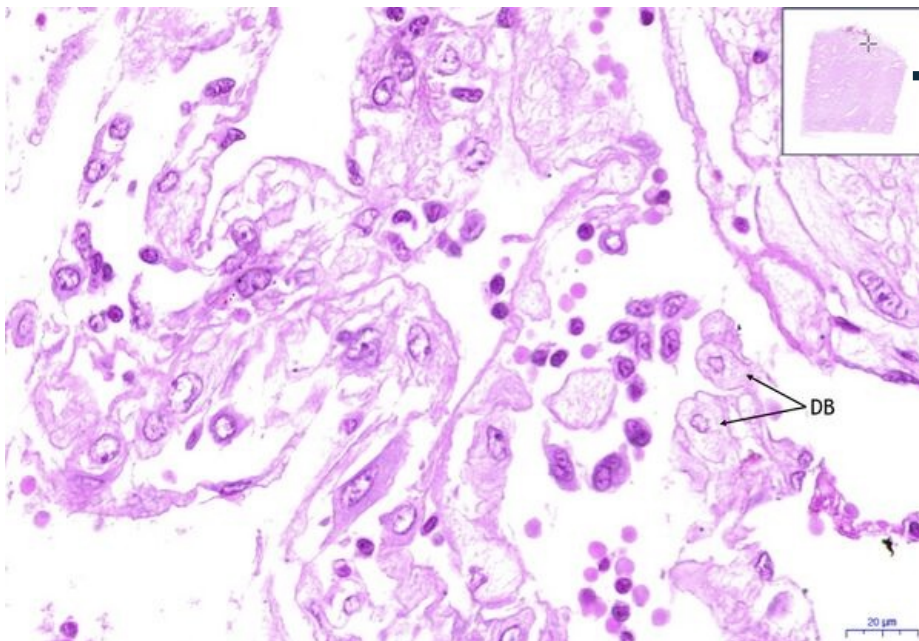
Uterus post partum, HE 10x

Uterus post partum:

- 1) **E** - endometrium
- 2) **DB** - decidual cells
- 3) **C** - cévy/blood vessels



Uterus post partum, HE 40x



Uterus post partum:

- 1) DB - deciduální buňky / decidual cells

Navigation

Navigation: Fetal membranes

← Slide X4 | List of the slides | Slide X6 →