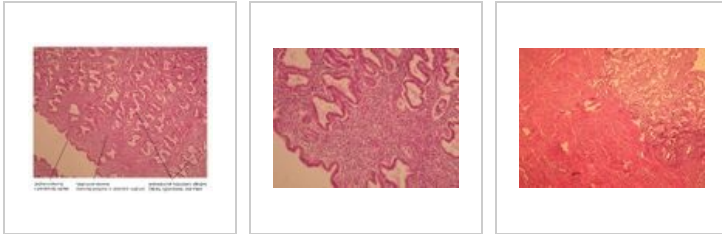
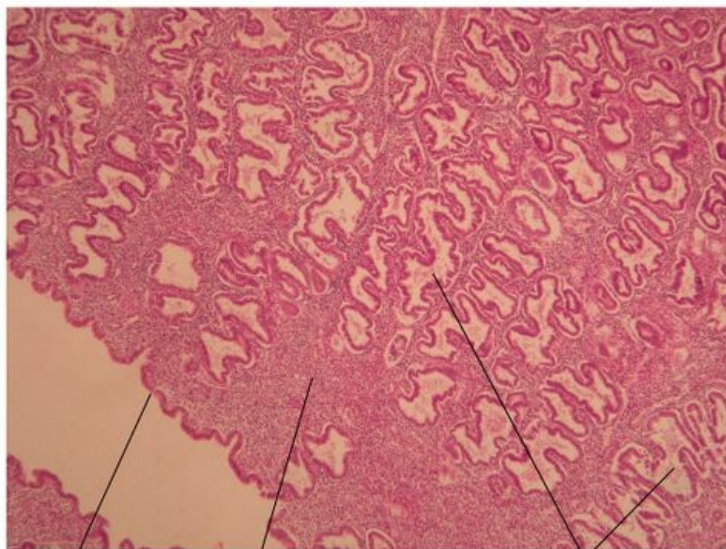


Uterus histological slide

Overview



Slide no. 1: Mucosa of the uterus, endometrium

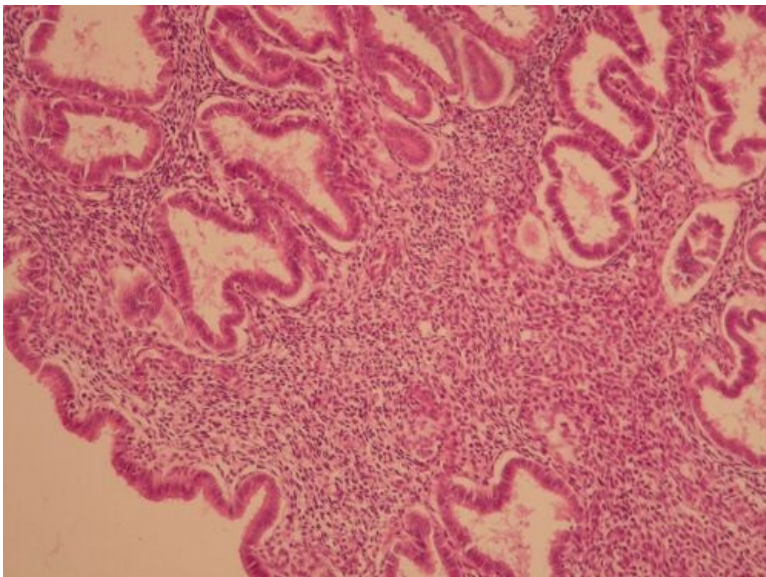


Jednovrstevný
cylindrický epitel Vazivové stroma
(lamina propria = slizniční vazivo) Jednoduché tubulózní děložní
žlásky (glandulae uterinae)

Name: Uterus – endometrium, hematoxylin-eosin

Description: Endometrium is the mucosa of the uterus, which consists of single layer cylindrical epithelium and lamina propria (loose collagenous tissue), in which tubular endometrial glands can be found. Endometrium is functionally divided to zona functionalis and zona basalis.

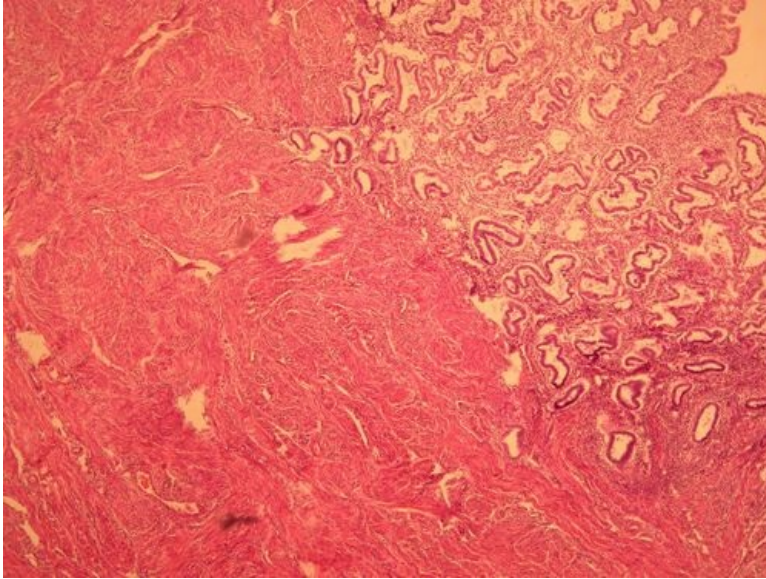
Slide no. 2



Name: Uterus – endometrium

Description: Endometrial glands are filled during the secretion phase and begin to twirl. Lamina propria is made of very loose collagenous tissue with high content of cells and low content of intercellular matrix, the number of intercellular fibers is significantly low.

Slide no. 3



Name: Endometrium + Myometrium

Description: Clearly distinguishable parts – there is endometrium in the right upper quarter, the rest consists of myometrium (the thickest layer of the uterus made of bundles of smooth muscle fibers, connective tissue and vessels).

Embryology – reproductional systems

- Ovarium (slide)
- Uterus (slide)
- Testes (slide)

Links

- Module Cellular Basics of Medicine (3. LF UK)

Study materials for slides

- Uterus