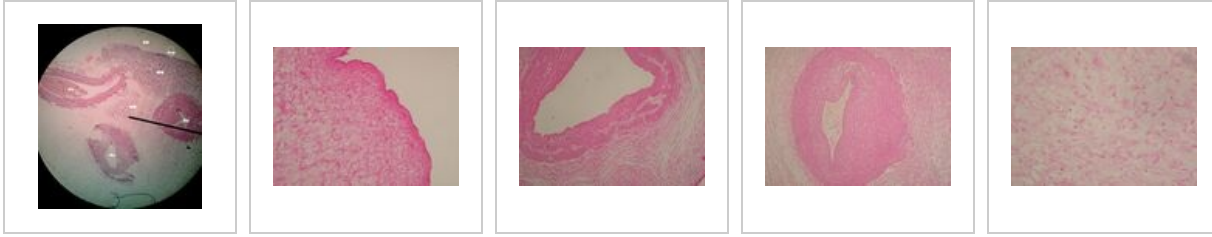


# Umbilical cord (SFLT)

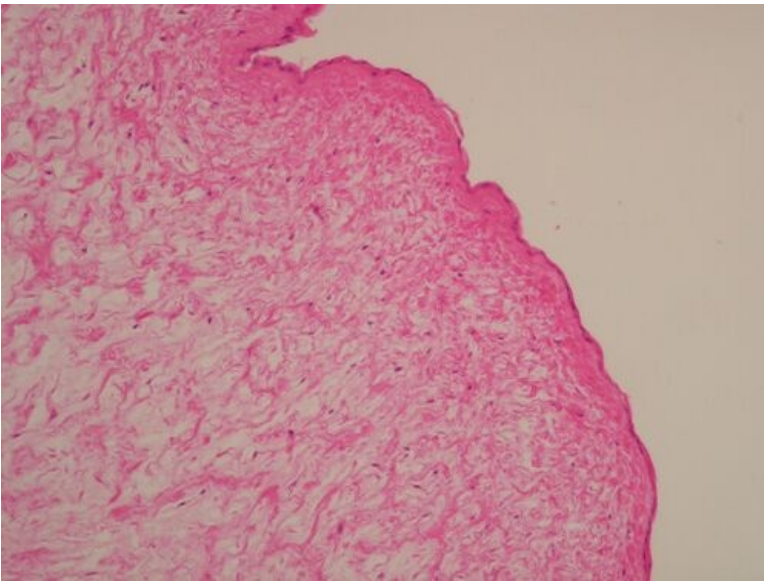


## Umbilical cord - overview (HE)



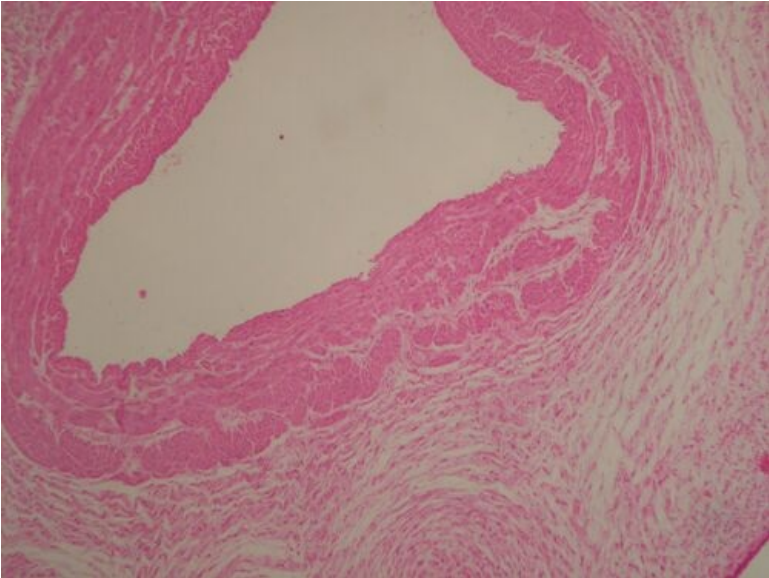
Description: Au – arteria umbilicalis (paired), Vu – vena umbilicalis sinistra (unpaired), Aep – amniotic epithelium (one-layer cubic), WR – Wharton's jelly, AD – amniotic cavity (not on the specimen, I mention it for illustration in vivo).

## Umbilical cord - detail (HE)



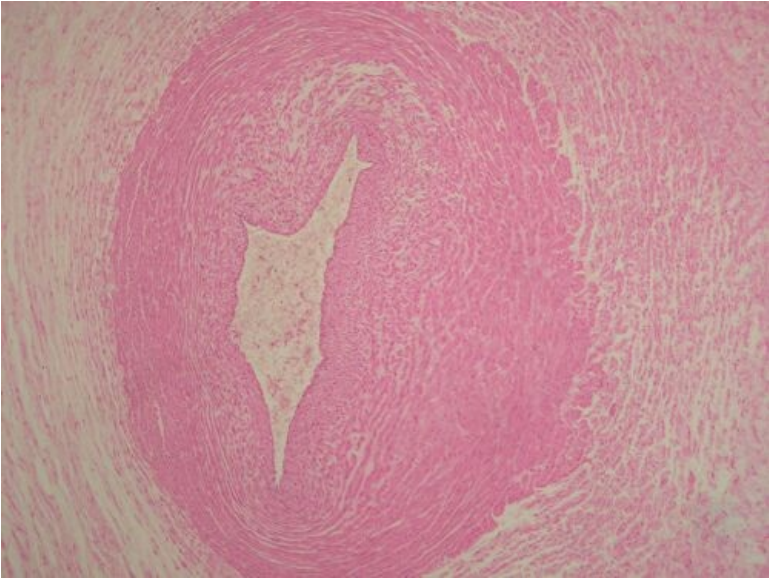
**Description:** Aep - amniotic epithelium (single-layer cubic), WR - Wharton's jelly, AD - amniotic cavity (in vivo only).

### Umbilical cord - vena umbilicalis (HE)



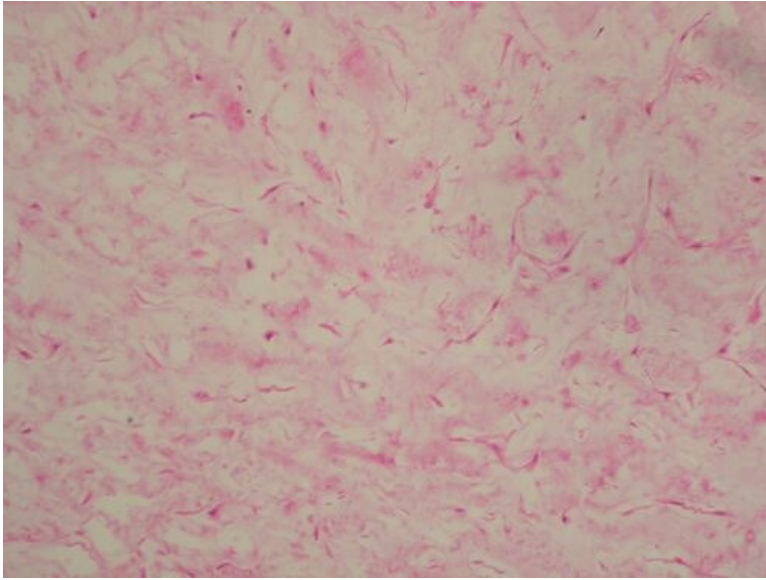
**Description:** Lu - vein lumen, E - endothelium, TM - tunica media, TA - tunica adventitia, WR - Wharton's jelly, Aep - amniotic epithelium (single-layer cubic), AD - amniotic cavity (in vivo only) .

### Umbilical cord - arteria umbilicalis (HE)



**Description:** Lu - vein lumen, TM - tunica media, TA - tunica adventitia, WR - Wharton's jelly.

## Umbilical cord - Whartons jelly (HE)



**Description:** Embryonic type of tissue - contains mostly extracellular matrix (rich in hyaluronic acid), less fibroblasts and fibers (collagen V).

## foetus wrappers

- Umbilical cord (SFLT)
- Fruit Packaging (SFLT)
- Placenta (SFLT)
- Chorion frondosum (SFLT)

## Links

- Histologický atlas (3. LF UK)