

# Transesophageal echocardiography

This article has been translated from WikiSkripta; ready for the **editor's review**.

Transesophageal echocardiography is an ultrasound examination of the heart, in which an ultrasound probe is inserted into the esophagus and stomach . The ultrasound probe thus comes in close proximity to the heart, which makes it possible to more accurately visualize some structures of the heart (compared to conventional transthoracic echocardiography).

The main indications for transesophageal echocardiography include:

- suspected presence of a dissecting aortic aneurysm , infectious endocarditis vegetation or thrombus in the atria;
- evaluation of valve prostheses;
- perioperative monitoring of left ventricular function

## Links

### Related Articles

- Echocardiography
- Stress examination of the cardiovascular system

### Source

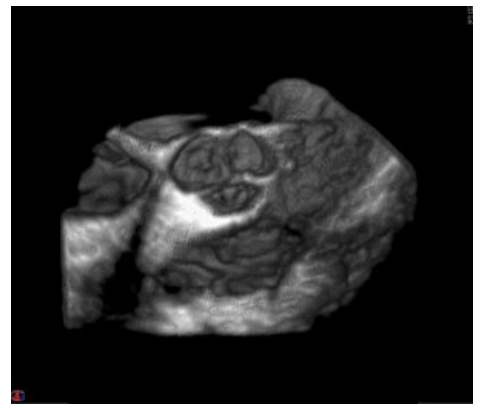
- ws:Transezofageální echokardiografie

### References

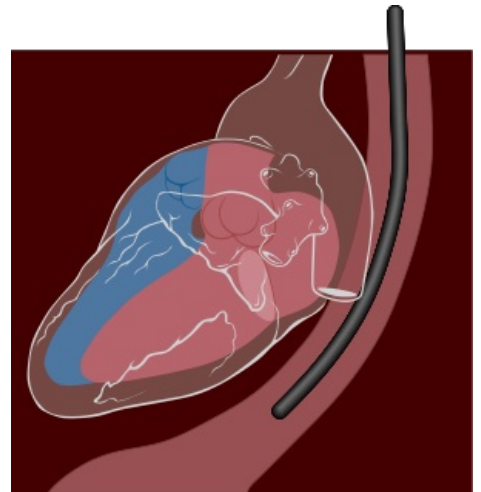
1. ↑ CHILD, P., et al. *Internal Medicine*. 2nd edition. Prague: Galén, 2007. ISBN 978-80-7262-496-6 .



probe for transesophageal echo



tricuspid valve imaging in 3d echocardiography



schematic of probe insertion