

Tonsils

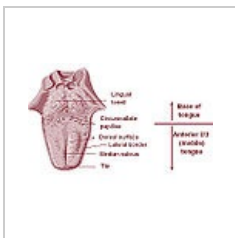
The meaning of the word 'tonsil' means a mass of lymphoid tissue. The tonsils surround the oral cavity, providing it with protection against pathogens that may enter the mouth.

Nasal/Pharyngeal Tonsil

- It is the midline of the roof of the nasopharynx
- It protrudes from behind the choanae
- It has shallow foldings between sagittally-orientated mucosal folds
- It is visible when the tongue is depressed

Lingual Tonsil

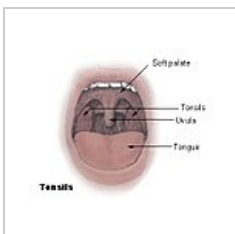
- It is on the posterior third of the tongue
- It is abundant with lymphoid nodules, which contain B-lymphocytes
- It is flat with numerous crypts



Lingual tonsil

Palatine Tonsil

- It is on each side of the oropharynx; between the palatoglossal and palatopharyngeal arches
- It has crypts and tonsillar pits



Palatine tonsils

Waldeyer's Circle

- Also known as 'Waldeyer's Ring'
- It is the lymphatic gate made of all three tonsils

Links

Bibliography

SNELL, Richard S. *Clinical Anatomy by Regions*. 8th Edition edition. 2004. ISBN 978-0-7817-6404-9.