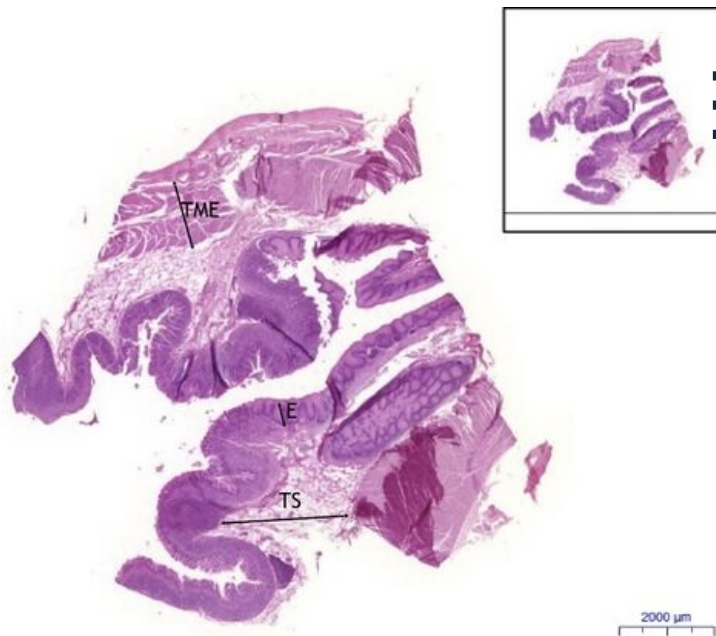


Stomach cardia - HE

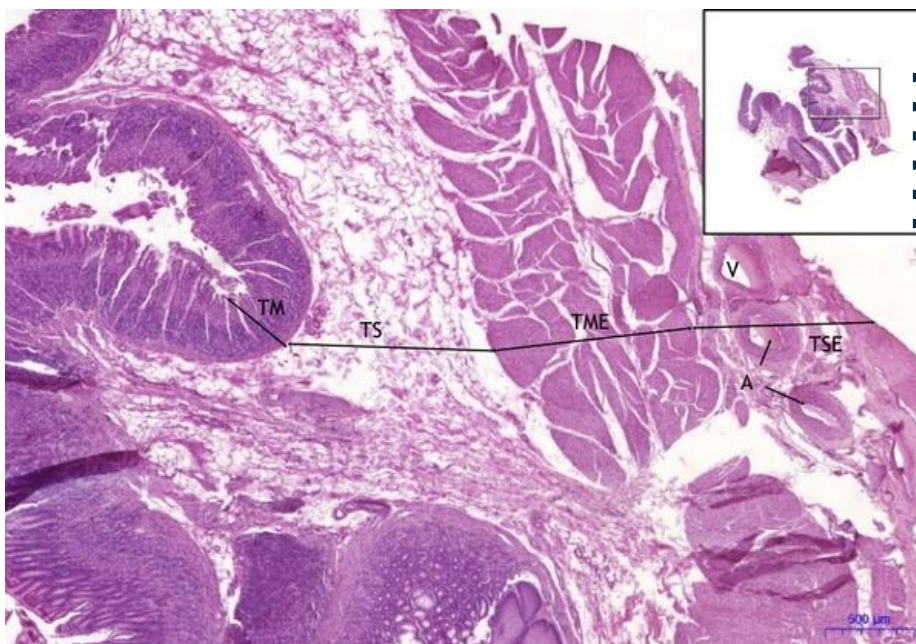
Stomach cardia, HE 0,5x



Stomach cardia:

- 1) **E** - epithelium of esophagus
- 2) **TS** - tunica submucosa
- 3) **TME** - tunica muscularis externa

Stomach cardia, HE 2x



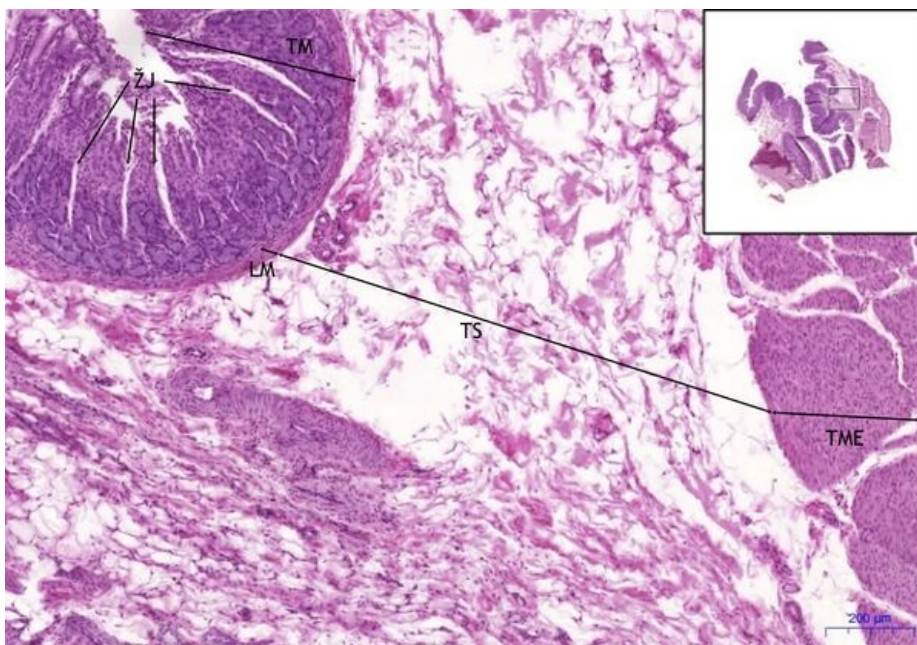
Stomach cardia:

- 1) **TM** - tunica mucosa
- 2) **TS** - tunica submucosa
- 3) **TME** - tunica muscularis externa
- 4) **TSE** - tunica serosa
- 5) **A** - artery
- 6) **V** - véna

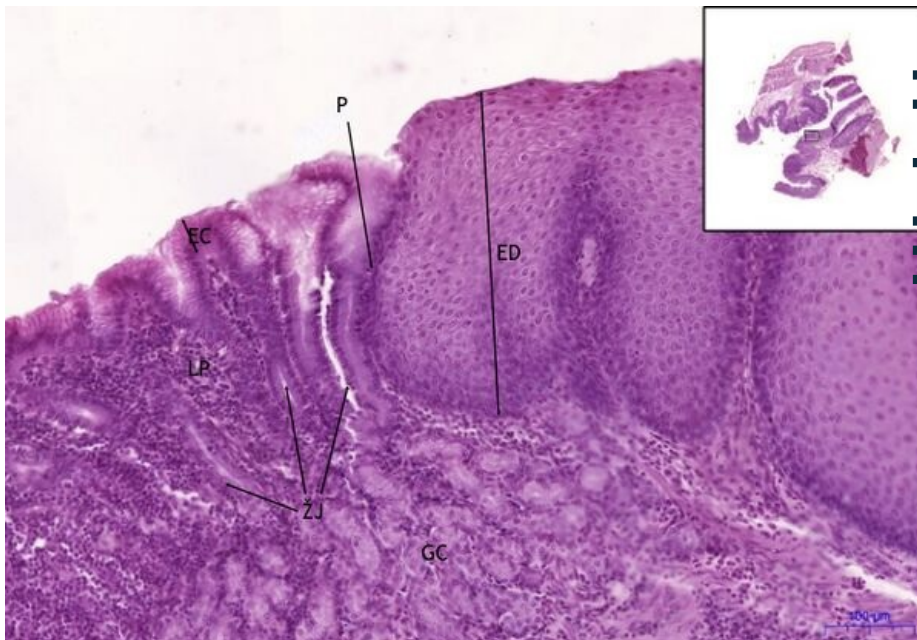
Stomach cardia, HE 5x

Stomach cardia:

- 1) **TM** - tunica mucosa
- a) **ŽJ** - gastric pits
- 2) **LM** - lamina muscularis mucosae
- 3) **TS** - tunica submucosa
- 4) **TME** - tunica muscularis externa



Stomach cardia, HE 10x



Stomach cardia:

- 1) **TM** - tunica mucosa
- a) **ED** - esophageal stratified squamous epithelium
- b) **EC** - stomach simple columnar epithelium
- c) **ZJ** - gastric pits
- d) **GC** - glandulae cardiacae
- e) **P** - transition

Navigation

Navigation: Gastrointestinal tract

← Slide Z9 | List of the slides | Slide Z11 →