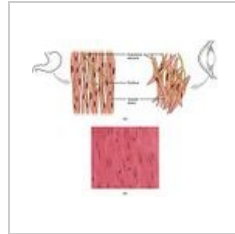


# Smooth muscle (preparation)

## Overview

Smooth muscle  
4.jpg

Smooth muscle  
3.jpg



Smooth  
muscle2.jpg

## Preparation 1

File:Smooth muscle 4.jpg

**Name:** Smooth muscle stained with (H+E)

**Description:** PLongitudinal section of smooth muscle. Smooth muscle cells are spindle-shaped with a nucleus in the middle. In the layers, the end of the cell, which is thinner and does not contain the nucleus, is attached to the middle part of the cell with the nucleus.

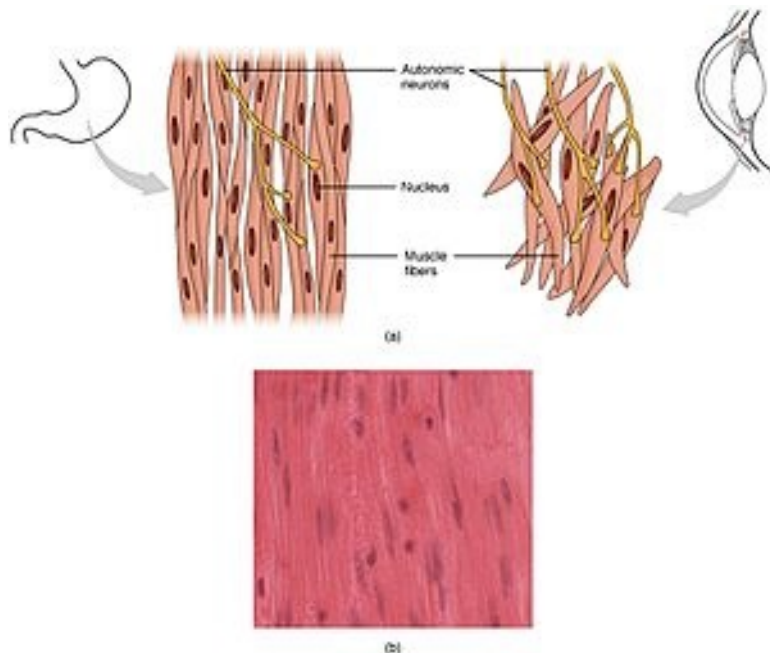
## Preparation 2

File:Smooth muscle 3.jpg

**Name:** Smooth muscle stained with hematoxylin and eosin

**Description:** Transverse section of smooth muscle. The nucleus is in the center of the cell.

## Preparation 3



**Name:** Smooth muscle cell

**Description:** Longitudinal section of smooth muscle.

## Preparation 4

File:Smooth muscle 2.jpg

**Name:** Smooth muscle, higher magnification

**Description:** Smooth muscle on longitudinal section.

# Muscles

- Smooth muscle (preparation)
- Cardiac muscle (preparation)
- Skeletal muscle (preparation)

## Links

- Modul Buněčné základy medicíny (3. LF UK)

## Study materials for preparations

- muscle

Kategorie:Histologie