

Selected biochemical examinations in patients with diabetes mellitus

Disorders of energy metabolism, especially obesity, diabetes mellitus, conditions that precede diabetes (prediabetes) and the so-called metabolic syndrome, are of exceptional medical importance. Today, diabetes alone affects around 10% of the population in developed countries and its incidence is still increasing. This is a disease that is associated with a large number of complications and dramatically increases mortality and morbidity. Understanding diabetes and knowing the principles of its diagnosis and treatment is therefore essential for any healthcare professional.

Blood glucose regulation

Under physiological conditions, the blood glucose concentration (blood glucose) is kept in a narrow range of 3.9–5.6 mmol / l on an empty stomach and below 10 mmol / l after a meal. It is tightly regulated by a number of mechanisms: insulin, which lowers blood glucose, and anti-insulin hormones, glucagon, catecholamines, glucocorticoids, and growth hormone, which increase blood glucose. The liver also plays a significant role in the regulation of glucose homeostasis. Maintaining a constant blood glucose level is essential for the activity of the CNS and other tissues and cells (eg erythrocytes).

Glucose sources

The exogenous sources of glucose for the body are disaccharides and polysaccharides contained in food. Glucose is formed by their breakdown in the small intestine and is utilized in the liver, muscles, adipose and brain tissue as a direct source of energy. Unoxidized glucose is stored in the form of glycogen or converted to fatty acids and triacylglycerols. In the fasting state, the normal glucose concentration is maintained by the breakdown of glycogen by glycogenolysis and the formation of glucose from non-saccharide precursors (amino acids, glycerol and lactate) in the process of gluconeogenesis.

Changes in blood glucose levels

- A fall in blood glucose below 3.2 mmol / l is called hypoglycemia. In hypoglycemia, the supply of glucose to brain tissue is compromised. It can occur during various diseases, most often in overdose of antidiabetics, more rarely in long-term starvation, in some endocrine tumors or in inherited metabolic disorders that also affect glucose metabolism (eg glycogenosis). Severe hypoglycaemia is accompanied by restlessness, sweating and tremor;
- Glycaemia elevated above the reference range is referred to as hyperglycaemia. Chronic hyperglycemia is an essential manifestation of *diabetes*. However, we may also encounter transient non-diabetic hyperglycaemia. All situations where there are elevated levels of catecholamines, glucocorticoids and other stress hormones lead to it, including a number of acute diseases. A change in the regulation of glucose metabolism leading to hyperglycemia also accompanies inflammatory conditions. Hyperglycemia can also be induced iatrogenically, most often as a result of treatment with steroid hormones and their analogues.

Diabetes mellitus

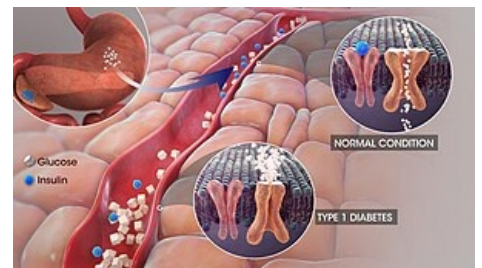
Diabetes mellitus (DM) is a chronic metabolic disease with high morbidity and mortality, the main and common manifestation of which is hyperglycemia due to absolute or relative insulin deficiency. There has been a significant and steady increase in the last decade, and there is also talk of a diabetes epidemic or pandemic. The cause of this phenomenon lies in the lifestyle of the population of economically developed countries (excessive energy intake, reduced physical activity).

At present, more than 9% of people with diabetes are registered in the Czech Republic (990,000). Another 5% of the population is expected to remain undiagnosed. These are most often type 2 DM (93% of cases), type 1 DM makes up about 5%, and other types are rather rare.

Classification of diabetes

- Type 1 diabetes mellitus
 - autoimmune,
 - LADA type (develops at a later age, it is often confused with type 2 DM),
 - idiopathic.
- Type 2 diabetes mellitus
 - with a predominant impaired insulin secretion,
 - with predominant insulin impairment.
- Other specific types of DM
 - pancreatopriv DM (chronic pancreatitis, resection, trauma, cystic fibrosis, hemochromatosis),

- DM in endocrinopathies (acromegaly, glucagon, pheochromocytoma, hypercortisolism, hyperthyroidism, etc.),
- Drug- and chemical-induced DM (glucocorticoids, nicotinic acid, thyroid hormones),
- monogenic forms (MODY).
- Gestational diabetes mellitus
 - occurs during pregnancy and resolves spontaneously during the sixth week,
 - two-phase screening is performed on it (Phase 1: fasting glucose -> Phase 2: oGTT)



Type 1 DM

There is a basic article on WikiScripts on this topic on the Gestational Diabetes Mellitus page .

Prediabetes

- Increased fasting glucose (IFG).
- Impaired glucose tolerance (IGT).

See the Prediabetes page for more information .

Pathogenesis

Disruption of glucose metabolism occurs:

- impaired insulin production or secretion (insulin deficiency),
- insulin disorder (insulin resistance),
- possibly a combination of both mechanisms.

Insufficient insulin function disrupts the transport of glucose from the blood to the cell, leading to hyperglycemia and glucose deficiency intracellularly. Insufficient glucose utilization leads to a change in the mechanisms for ATP gain. Gluconeogenesis and glycolysis are stimulated , and lipolytic breakdown of triacylglycerols into fatty acids and glycerol increases in adipocytes . Degradation of fatty acids by β -oxidation produces excess acetyl-CoA, from which ketones (acetacetate, 3-hydroxybutyrate and acetone) are formed in the liver. Acetacetate can serve as a source of energy for muscle and brain activity instead of glucose.

If the production of ketone bodies exceeds their utilization by peripheral tissues, ketoacidosis develops . Because ketone bodies are soluble in water and excreted in the urine, ketonuria occurs . When the threshold plasma glucose concentration (10-12 mmol / l) is exceeded , the transport capacity of the proximal tubule is disrupted and glucose enters the final urine. Glucose and ketone bodies are osmotically active, so they entrain even more water into the urine, which is the basis of polyuria .

Clinical picture

From the above, the characteristic symptoms of DM such as thirst and polydipsia, osmotic polyuria, inconstantly present anorexia and weight loss caused by fluid loss, decreased food intake and a negative energy balance in case of large urinary glucose losses result.

Psychological aspects of treatment

Due to the need for comprehensive treatment of the disease, cooperation at the doctor-patient level is important. A patient with diabetes may experience problems associated with a new diagnosis, necessary precautions, or related secondary complications that may lead to diabetic distress . It is appropriate for the doctor to focus on the psychological aspects of this disease.

Complication

- Acute complications
 - Hypoglycemia,
 - diabetic hyperosmolar hyperglycemic coma,
 - diabetic ketoacidosis
 - ketoacidotic coma
 - lactic acidosis,
 - lactacidotic coma.
- Late complications
 - Diabetic kidney disease
 - diabetic retinopathy,
 - diabetic neuropathy,
 - diabetic foot syndrome
 - atherosclerosis .

For more information, see Diabetes Mellitus Complications .

Type 1 diabetes mellitus

Type 1 diabetes mellitus is characterized by an absolute or almost complete deficiency of endogenous insulin and a life dependence on the administration of exogenous insulin. Patients are prone to ketoacidosis .

The disease results from the selective destruction of pancreatic islet β -cells by an autoimmune process in genetically predisposed individuals. The triggering mechanism of the autoimmune process is probably a viral infection or contact with another exogenous or endogenous agent.

The clinical picture of type 1 diabetes mellitus depends on the aggressiveness of the autoimmune process . *In childhood and adolescence* , when most diseases develop, the last stage of β -cell destruction tends to be very rapid, so diabetes is manifested by classic *acute symptoms* (including ketoacidosis). At *a later age* , the disease tends to have a much *slower* onset and only eventually results in complete insulin dependence. Insulin secretion may be reduced for several years, but sufficient to prevent ketoacidosis. The clinical course of the disease therefore resembles type 2 diabetes mellitus and it is stated that about one in ten patients originally classified as type 2 diabetes has slow-onset type 1 diabetes -latent autoimmune diabetes of *adults* (LADA) .

Type 1 DM is a less common form of diabetes that occurs in about 7% of diabetics. The classic symptoms of type 1 DM are thirst, polyuria and weight loss.

Comparison of the characteristics of type 1 and type 2 DM at the beginning of the disease.

Type 1 diabetes mellitus	Type 2 diabetes mellitus
	insulin resistance, impaired insulin secretion
insulin secretion is missing	a typical beginning after 40 years
a typical beginning in childhood and adolescence	more often higher BMI
ketoacidosis	
positive autoantibodies	autoantibodies are missing
C-peptide is missing	C-peptide normal or elevated
immunoreactive insulin is missing	immunoreactive insulin normal or elevated

Type 2 diabetes mellitus

Type 2 is the predominant form of DM. Patients are not vitally dependent on exogenous insulin because insulin production is not reduced or is reduced less than in type 1 DM .

The cause of this type is a breakdown in the action of insulin . This is the so-called insulin resistance (insulin resistance) due to *a disorder of the insulin receptor* or a disorder in the transmission of the insulin signal to the cell.

Insulin levels in the blood tend to be increased initially due to insulin resistance . In the further course of the disease, a disorder of insulin secretion also occurs , β -cells gradually lose their ability to respond to increased glucose levels by insulin synthesis.

The disease manifests itself mainly in adulthood, usually over the age of 40. Type 2 DM has a high heredity, so the family burden is evident in the anamnesis. Unlike type 1, patients are not prone to ketoacidosis. 60-90% is associated with obesity.

Gestational diabetes

Gestational diabetes mellitus (GDM) is a disorder of various stages of glucose metabolism that occurs during pregnancy and resolves spontaneously during the sixth trimester. In addition to GDM, so-called overt diabetes mellitus (DM) can also be detected during pregnancy, which meets the diagnostic criteria of diabetes valid for the general population and usually persists after the sixth week. Caring for pregnant women with overt diabetes is the same as caring for pregnant women with pregestational diabetes .

All pregnant women, except those already treated for diabetes, are subjected to a two-phase GDM screening provided by an outpatient gynecologist. In the first trimester of pregnancy (up to the 14th week), fasting venous blood glucose is determined . If a pregnant woman has fasting blood glucose repeatedly (ie 2 consecutive days) $\geq 5.1 \text{ mmol} \cdot \text{l}^{-1}$, she is diagnosed with GDM, no longer has to undergo oGTT and is referred to a diabetologist. All women with a negative result in the 1st trimester then undergo a three-point oral glucose tolerance test (oGTT) with a load of 75 g of glucose between 23 + 1 and 27 + 6 weeks of pregnancy if they have a fasting blood glucose lower than $5.1 \text{ mmol} \cdot \text{l}^{-1}$. Normal glycemias in oGTT are $<10.0 \text{ mmol} \cdot \text{l}^{-1}$ at 60 minutes and $<8.5 \text{ mmol} \cdot \text{l}^{-1}$ at 120 minutes. At higher values, GDM is diagnosed and the woman is referred to diabetology. Depending on the severity of the GDM, diet, metformin or insulin are used to compensate for blood glucose .

Borderline disorders of glycoregulation

The following are considered to be the boundaries between normal glucose tolerance and diabetes mellitus :

- impaired fasting glucose (IFG),

- impaired glucose tolerance (IGT).

Basic biochemical examinations in patients with diabetes mellitus

Determination of blood glucose concentration is an examination that will provide basic information about carbohydrate metabolism. Capillary or venous blood is collected and glucose is determined in whole blood, plasma or serum. When determining glucose in whole blood, the values are 10–15% lower (depending on the hematocrit), in arterial blood they are 10% higher than in venous (arteriovenous difference). NaF (2.5 mg per ml of whole blood) is added to the collection vials to prevent glycolysis.

Blood glucose testing has the necessary informative value only if the time interval between blood collection and food intake is known.

Blood glucose testing is performed:

- fasting (blood is taken at least 8 hours after food intake) - indicated when searching for diabetics and diagnosing DM;
- randomly measured glycemia (blood is taken without indicating the time relationship to food intake) - is performed when hypoglycemia or hyperglycemia is suspected;
- postprandial - postprandial glycaemia (1 hour after a carbohydrate meal) - indicated when monitoring the effectiveness of DM treatment;
- as a glycemic profile - blood glucose is determined several times a day, usually before main meals, sometimes after meals and at night.

Methods for determining blood glucose

Determination of blood glucose in laboratory conditions

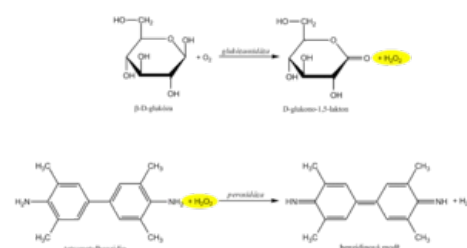
Various methods are used to determine glucose concentration. Enzyme methods are widespread. Glucose can be determined by any enzyme that metabolizes it. Another article discusses the possibilities of non-invasive blood glucose measurement.

Glucose oxidase reaction

The recommended routine method uses *coupled enzymatic reactions of glucose oxidase (GOD, EC 1.1.3.4) and peroxidase (POD, EC 1.11.1.7)*. In the first reaction, the enzyme glucose oxidase catalyzes the oxidation of glucose by atmospheric oxygen to form gluconolactone. It is known that 36% of glucose is in solution in the form of the α -anomer and 64% in the form of the β -anomer. GOD is highly specific for β -D-glucopyranose. In order for both anomers to be oxidized, a mutation of the α - to β -anomer is required, which occurs spontaneously during a sufficiently long incubation. An equimolar amount of hydrogen peroxide is formed as a by-product of the glucose oxidase reaction.

In another peroxidase-catalyzed reaction, the hydrogen peroxide formed reacts with a suitable chromogen, which is oxidized to a reactive intermediate, which is coupled with another substance to a stable soluble dye. An example is the oxidative coupling of a phenol derivative with 4-aminoantipyrine to a red dye, the absorbance of which is measured after the reaction equilibrium has stabilized.

Other methods use *measuring the loss of oxygen* that occurs during a glucose oxidase-catalyzed reaction, which can be monitored electrochemically with an oxygen electrode or an enzyme electrode.



Glucose oxidase and peroxidase reactions

Hexokinase reaction

The hexokinase method is characterized by high specificity. Hexokinase (EC 2.7.1.1) phosphorylates glucose in the presence of ATP to glucose-6-phosphate. In the next step, glucose-6-phosphate is oxidized by glucose-6-phosphate dehydrogenase against NADP⁺ to 6-phosphogluconolactone. The reduction of NADP⁺ to NADPH can be evaluated by direct photometry in the UV region on the principle of Warburg optical test.

Determination of glycemia in non-laboratory conditions

Glycemia is one of the parameters that is often examined even without a laboratory background. Rapid guideline blood glucose determination is common in emergency care. In patients treated with insulin, glycemia is also preferably monitored regularly with a personal glucometer, and treatment is adjusted based on the measured values. Blood glucose levels are among the parameters most often determined *by point of care testing* (POCT) techniques. However, it must be borne in mind that POCT methods, although improving the quality of care and patient comfort, do not replace regular medical examinations or laboratory tests.

Rapid blood glucose methods use several principles. The starting material is usually a drop of full capillary blood, which is applied to the test strip.

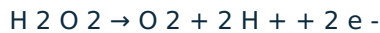
The oldest bands were based on the same reactions as the photometric measurement of glucose concentration. The reaction zone contained *glucose oxidase* , *peroxidase* and the appropriate chromogen. The evaluation was performed either visually by comparison with a color scale, or using a glucometer - a single-purpose reflection photometer .

Most glucometers today use enzyme electrodes .

The first generation of sensors appeared in the 1960s. The oldest system was based on the glucose oxidase reaction. He used two electrodes, one covered with an enzyme. The oxygen concentration in the sample and the rate of its decrease during the reaction was measured by the so-called Clark method: oxygen is reduced at the platinum cathode, the current intensity between the cathode and the anode corresponds to its concentration:



Later, hydrogen peroxide production was determined electrochemically instead of oxygen consumption. Even in this case, it is a simple electrochemical reaction, this time taking place at the anode:



The analyzers constructed in this way were simpler and could be miniaturized more. However, amperometric measurement of hydrogen peroxide production is influenced by a number of substances: ascorbate, uric acid, many drugs, etc. Another problem of many first-generation sensors was the dependence of the measurement results on the oxygen saturation of the sample.

Second-generation sensors are also based on the glucose oxidase reaction, but instead of molecular oxygen, another substance is called the electron acceptor - the so-called *mediator* . Another possibility is the oxidation of glucose to gluconolactone by another bacterial enzyme, glucose dehydrogenase , whereby electrons are again transferred to a suitable mediator. In both cases, the reduced mediator is reoxidized at the anode and either the current flowing between the cathode and the anode is measured (amperometric determination) or the resulting anode charge (coulombometric determination). A number of specific test strip configurations are used, and various substances are used as mediators (eg, ferric cyanoferrate, ruthenium hexamine, osmium complexes, phenanthrolinequinone).

Oral glucose tolerance test

The oral glucose tolerance test (oGTT) reflects the body's response to glucose in a physiological way and assesses whether the body is able to maintain blood glucose levels within the normal range after glucose exposure. It is a summary of information not only about the effects of hormones regulating glycemia , but also about processes in the gastrointestinal tract (rate of gastric emptying , intestinal passage and resorption) and liver function.

The oral glucose tolerance test is used primarily for the early diagnosis of gestational diabetes . In this case, it is used as a routine screening examination, performed on all pregnant women at the turn of the second and third trimesters (at high risk, in addition, as soon as possible after pregnancy).

In others, the oral glucose tolerance test is recommended as an additional diagnostic test for the diagnosis of DM if fasting and random glucose values cannot be determined (especially if fasting blood glucose is between 5.6-7.0 mmol / l) . If fasting or random blood glucose levels are conclusive for the diagnosis of DM, oGTT would be an unnecessary burden for the patient and is therefore contraindicated. Furthermore, it is not performed in acutely ill and immobilized patients or in patients on a reduction diet.

Execution of oGTT

- 3 days before the test we do not limit the intake of carbohydrates (at least 150 g / day) and the patient performs the usual physical effort;
- after fasting for 8-14 hours, a fasting blood sample is taken ;
- the patient drinks 75 g of glucose dissolved in 250-300 ml of tea or water within 5-10 minutes;
- the patient remains seated and does not smoke during the examination;
- another blood sample is taken in pregnant women at 60 and 120 minutes , in all other patients only at 120 minutes after glucose exposure. .

In addition to the above-mentioned oGTT method, an even more detailed so-called glycemic curve can be performed , where blood is taken several times, usually at 30-minute intervals.

During the glycemic curve we can describe three sections:

1. Glucose is absorbed in the gut after oral administration *and* blood glucose increases - the rising part. It is usually steep after gastrectomy and flat during malabsorption. As the blood glucose level rises, the oxidation of glucose in the muscles is stimulated and glycogen is formed in the liver.
2. The function of the liver and the effects of insulin in the liver are reflected by another - the peak part of the glycemic curve. In *the onset of DM* , glucose in the liver is not sufficiently converted to glycogen, and therefore the peak of the glycemic curve exceeds 11.1 mmol / l and the maximum occurs later than in 60 minutes. In *liver disease* , the apex of the curve is also altered. Hepatocytes are not enough to metabolize the absorbed glucose, so more glucose passes into the periphery. The peak also exceeds 11.1 mmol / l and the increase persists for more than 60 minutes, but unlike DM, it returns to normal at 120 minutes (bell shape of the curve). In *hyperthyroidism* , the level of 11.1 mmol / l is also exceeded due to rapid absorption, but the decrease is rapid (Gothic curve).
3. The descending part is dependent on the effects of insulin and is physiologically characterized by a decrease in glucose levels. A slow and insufficient return of blood glucose to normal is a classic *manifestation of DM* .

Normally, we observe a maximum rise in 30-60 minutes, there is no glycosuria and after 2 hours the blood glucose returns to fasting values. In general, the oGTT is burdened with a large random error and low reproducibility.

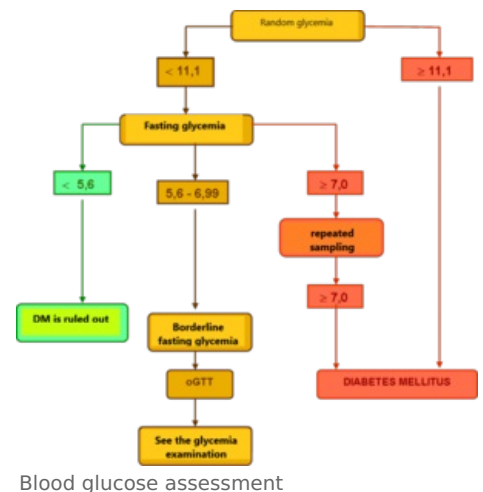
Evaluation of glycemia and oGTT

Healthy individuals have fasting plasma glucose <5.6 mmol / l, with oGTT having a fasting blood glucose <7.8 mmol / l at 120 minutes. It testifies to the diagnosis of DM

- fasting blood glucose > 7.0 mmol / l
- or
- random blood glucose > 11.1 mmol / l
- or
- blood glucose > 11.1 mmol / l at 120 minutes oGTT

together with classic clinical symptoms (thirst, polyuria, weight loss).

To confirm the diagnosis of DM, a repeated examination from the next collection is required on one of the following days.



Glycated proteins

A direct consequence of elevated blood sugar levels is its intense binding to proteins, which is the essence of non-enzymatic glycation . The glycation process is conditioned by the presence of free amino groups in the protein molecule.

The rate of glycation is mainly influenced by the concentration of glucose and its duration of action. It also takes place in healthy individuals. Glycation takes place on all serum proteins and leads to the formation of glycated derivatives. Both soluble and structural proteins are glycated.

Non-enzymatic glycation takes place in several phases of the so-called **Maillard reaction** .

- The sequence of glycation reactions is initiated by the aldehyde group of the reducing sugar, which binds to the amino group of the protein. A labile aldimine of the Schiff base type (*early glycation products*) is formed. Schiff's formation is quick, reaching equilibrium within hours. This reaction is reversible.
- Schiff's base then slowly, over several days, undergoes chemical rearrangement. A more stable *glycation transition product* is formed , the so-called Amadori product , which has the character of a ketoamine . This produces a keto group on the second carbon of sugar, which is characteristic of fructose . The concentration of fructosamines formed can be determined by reaction with nitrotetrazolium blue (see below). Amadori's products are also to some extent reversible , although the balance is greatly shifted in the direction of their formation. Steady state is reached in a few weeks. The amount of ketoamines can be reduced by normalizing blood glucose .
- Aldose, which is two carbons shorter than the original protein-bound sugar, can also be cleaved from Schiff's base. A di-carbon residue remains attached to the protein, which is further oxidized and reacts with another amino group of the protein. The chain of further reactions results in the formation of highly reactive glyoxal-type dialdehydes.
- Amadori products are reactive substances. In weeks and months, regardless of the presence of glucose , advanced glycation *end-products* (AGE) are formed from Amadori products by reactions mainly with long-lived proteins (eg collagen , elastin , nerve myelin). These processes are irreversible .

Non-enzymatic glycation in long-term hyperglycemia is one of the causes of tissue damage in some organs in patients with diabetes mellitus .

The determination of Amadori-type glycation products is a suitable indicator of long-term glucose concentration and provides indirect information on the course of glycaemia over a period of time that corresponds to the biological half-life of the protein . Glycated hemoglobin and glycated proteins are routinely determined .

The determination of glycated hemoglobin and glycated proteins is used to control diabetes mellitus and to diagnose persistent hyperglycemia. Elevated glycated derivatives indicate that elevated blood glucose levels have prevailed in the patient in recent weeks and that diabetes mellitus has not been adequately controlled.

Glycated hemoglobin

Glycated hemoglobin (HbA 1c) is considered the best way to control glucose levels in diabetics over the long term . Glycated hemoglobin concentration indicates blood glucose values in the previous 2-3 months (erythrocyte lifespan). It is determined by chromatographic or immunochemical methods.

Evaluation of glycated hemoglobin (HbA 1c) levels in diabetics

Compensated DM	≤ 45 mmol / mol
The need for a change in therapy	≥ 53 to 70 mmol / mol

Glycated hemoglobin concentration refers to total hemoglobin concentration and is expressed in mmol HbA 1c per mole of total hemoglobin . An expression in percent of HbA 1c of total hemoglobin ($1\% \pm 10 \text{ mmol / mol}$) can also be found.

The assessment of glycated hemoglobin concentration in the table above is indicative. Target concentrations vary according to the risk of hyper- / hypoglycemia in a particular patient.

The glycated hemoglobin assay can also be used to screen for diabetes mellitus. At HbA 1c concentrations above 39 mmol / mol, diabetes mellitus is suspected . If the concentration of HbA 1c is higher than 48 mmol / mol, the diagnosis of diabetes mellitus can be considered confirmed.

Evaluation of glycated hemoglobin (HbA 1c) levels in diabetes mellitus screening

Physiological values	<39 mmol / mol
Suspicion of diabetes mellitus	39-48 mmol / mol
Diabetes mellitus	≥ 48 mmol / mol

Fructosamines

Glycated proteins or fructosamines have a shorter half-life and their level reflects the average glucose concentration for the period of 2-3 weeks before the examination. Their main component is glycated albumin. Hypoproteinemia may falsely reduce the results. Today, determination of fructosamine concentrations is not a routine test in diabetics.

Evaluation of glycated protein concentration (S-glycated proteins)

physiological value	205-285 μmol / l
good DM consumption	285-320 μmol / l
Satisfactory DM consumption	321-370 μmol / l
Bad DM consumption	above 370 μmol / l

Principle of determination of glycated proteins (fructosamine)

Examination of glycated proteins uses the reducing properties of fructosamine in an alkaline environment. In the presence of carbonate buffer, fructosamine rearranges to its tautomer - eneaminol, reacts with nitrotetrazolium blue (NBT) . During the reduction, the heterocyclic rings of NBT are opened and colored formazan is formed. The rate of formazan formation is directly proportional to the fructosamine concentration.

Like any method that utilizes the reducing properties of some serum components, this test is non-specific. It therefore begins with a few minutes of incubation to remove the effect of fast-reacting reducing agents. In commercial kits, the agent includes the enzyme uricase, which eliminates the reduction of NBT by uric acid.

Glucose in urine

Glucose filtered into the primary urine from the plasma is reabsorbed by active transport in the proximal tubules. The body protects glucose from unnecessary losses, so the renal tubules have a considerable reserve capacity - under physiological circumstances, the transport system is only about one-third busy. In hyperglycemia, the utilization of the transport system increases, and if the blood glucose exceeds values around 10 mmol / l (the so-called renal threshold for glucose), the capacity of tubular resorption is exceeded and glucose passes into the urine. Urinary glucose losses greater than 0.72 mmol / 24 hours are referred to as glycosuria (glucosuria)). Glycosuria is the most common finding leading to the detection of diabetes mellitus. However, a negative finding of glucose in the urine does not rule out this disease. Therefore, the determination of glucose in urine is not one of the basic biochemical parameters used for the diagnosis and monitoring of DM.

The finding of glycosuria should be evaluated together with the level of fasting blood glucose. Based on blood glucose, we distinguish:

- **Hyperglycemic glycosuria** , which is a typical finding in diabetes mellitus. However, with prolonged illness,

the renal threshold for glucose increases and glycosuria may even disappear. Therefore, it is only an orientation examination, on the basis of which DM therapy cannot be managed. So-called "foodborne glycosuria" may also occur temporarily as a result of a carbohydrate-rich diet or during oGTT.

- **Normoglycaemic renal glycosuria**, in which blood glucose levels are not elevated. It is the result of a disorder in the kidney tubular cells, which ensures the resorption of glucose. It can be a manifestation of an autosomal recessive disease, more often it occurs, for example, in toxic or inflammatory kidney damage affecting the function of the proximal tubule.

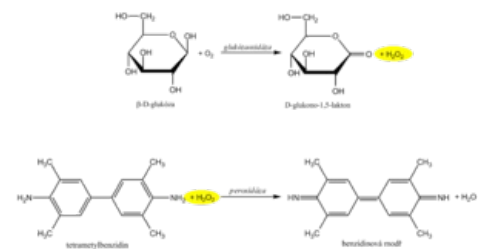
Methods for determining glycosuria

Non- specific chemical reactions or test strips can be used to determine glycosuria .

Non- specific chemical reactions are based on the reducing properties of monosaccharides . Fehling 's and Benedict 's tests use non-specific reductions of the Cu II + chelate complex with citrate or tartrate to Cu 1+ . In the Nylander test, bismuth nitrate BiNO₃ (O) is reduced to black metallic bismuth in the presence of reducing agents. These reactions are positive not only for glucose, but also other reducing carbohydrates , or substances with reducing properties (eg ascorbic acid). The urine tested must not contain proteins.

Determination of glucose in urine with a diagnostic strip

Diagnostic strips for the detection of glucose in urine are based on the principle of enzymatic reactions with glucose oxidase and peroxidase (same principle as the determination of glycemia). D -glucose is oxidized by oxygen using glucose oxidase to form D -glucono-1,5-lactone and hydrogen peroxide. In a subsequent peroxidase reaction, hydrogen peroxide oxidizes tetramethylbenzidine or another chromogen to a colored product. The light yellow color of the reaction surface changes to blue-green when positive. The test is specific for D -glucose, other sugars do not give a positive reaction.



Glucose oxidase and peroxidase reactions

High concentrations of reducing agents such as ascorbic acid slow down the development of color and can lead to falsely lower results. In these cases, it is recommended to repeat the analysis at least 10 hours after vitamin C withdrawal. Conversely, false positive results may be due to the presence of peroxidase substrates or oxidizing agents in the sampling vessel (eg H₂O₂, Persteril[®], chloramine B). Urine glucose determination should be performed rapidly to avoid bacterial contamination or urine should be stored at 4 ° C.

Interference with ascorbic acid is a common source of false negatives. Urine test strips from some manufacturers are therefore modified so that the reaction zone is at least somewhat resistant to ascorbic acid. Some diagnostic strips also have an ascorbate detection zone to alert you to false negatives.

Positive glycosuria is an urgent indication for fasting blood glucose testing.

Ketone bodies in urine

By " ketone bodies " we mean acetoacetic acid , acetone and β-hydroxybutyric acid . Increased urinary excretion of ketone bodies indicates increased lipolysis and increased acetyl-CoA production, which is not normally metabolized in the Krebs cycle due to insufficient glucose utilization in the absence of insulin . The result is the accumulation of acetyl-CoA, which condenses to acetoacetic acid . Most of the acetoacetic acid is reduced to β-hydroxybutyric acid in the liver , a smaller part spontaneously decarboxylates to acetone .

Determination of ketone bodies in urine is important especially in type 1 diabetics . We do not find ketone bodies in the urine of a properly treated diabetic. Their presence indicates metabolic ketoacidosis and is accompanied by hyperglycemia . Small amounts of ketone bodies in the urine may occur during weight loss or starvation and pregnancy . Ketonuria may also indicate tubular dysfunction , when there is insufficient resorption of ketone bodies.

The main representative of ketone bodies in urine is β-hydroxybutyric acid, which makes up about 60-70%, acetoacetic acid is present in about 30-35% and acetone contributes only a few percent.

[edit embedded article]

The detection of ketone bodies is based on the reactions of acetoacetic acid and acetone with sodium nitroprusside in an alkaline medium, which forms a red-violet-colored complex . This principle is used by Legal's and Lestradet's exams , as well as diagnostic strips. B-hydroxybutyric acid (ie the most abundant ketone substance) does not provide a reaction and therefore a negative result does not completely rule out ketoacidosis .

Compounds with free sulfhydryl groups (eg the antihypertensive captopril or uroprotectant used in some mesna chemotherapeutic regimens) provide false positivity for urinary ketone bodies . Quite often, bacterial products in urinary tract infections also provide a similar response.

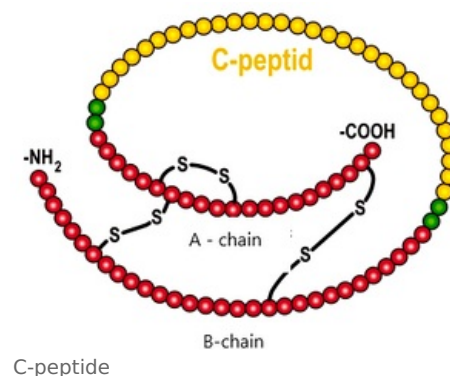
False negatives , apart from the already mentioned insensitivity of the β-hydroxybutyric acid tests, are not significant.

Further laboratory examination of patients with diabetes

Insulin (also due to the method of determination also immunoreactive insulin , IRI). Due to large fluctuations in levels throughout the day, interference with possible autoantibodies and the inability to distinguish endogenous insulin from medically administered insulin is usually determined during exercise tests (oGTT). The values are reduced in type 1 diabetics, while they are usually increased in insulin resistance syndrome.

C-peptide *C-peptide* is the part of the proinsulin molecule that is cleaved before insulin secretion . Its serum concentration corresponds to insulin secretion. It is not taken up by the liver and, as there is no C-peptide in the injected insulin, the results are not affected by the treatment. It crosses the glomerular membrane and therefore its concentration increases in renal insufficiency .

Type 1 diabetes is also associated with autoantibody positivity against the islets of Langerhans (ICA), against insulin (IAA), and especially against one isoform of glutamate decarboxylase (GAD 654).



Links

related articles

- Blood glucose
- Diabetes mellitus
- Type 1 diabetes mellitus
- Type 2 diabetes mellitus
- Gestational diabetes
- Borderline disorders of glycoregulation
- Glycaemia / determination
- Oral glucose tolerance test
- Glycated proteins
- Glucose in urine
- Ketone bodies in urine
- C-peptide

Reference

1. CZECH, Richard, et al. *Internal*. 3rd edition. Prague: Triton, 2020. 970 pp. ISBN 978-80-7553-780-5 .
2. ↑ CZECH, Richard, et al. *Internal*. 3rd edition. Prague: Triton, 2020. 970 pp. ISBN 978-80-7553-780-5 .
3. ↑ NAIK, Ramachandra G, Barbara M BROOKS-WORRELL and Jerry P PALMER. Latent autoimmune diabetes in adults. *J Clin Endocrinol Metab* [online] . 2009, vol 94, no. 12, pp. 4635-44, also available from < <https://academic.oup.com/jcem/article/94/12/4635/2596267> >. ISSN 0021-972X (print), 1945-7197.
4. ↑ Czech Gynecological and Obstetrical Society. Gestational diabetes mellitus. - [online] . 2019, year. -, vol. -, s. -, also available from < <http://www.gynultrazvuk.cz/data/clanky/6/dokumenty/2019-05-gestastacni-diabetes-mellitus-dp-cgps-cls-jep-revize.pdf> >.
5. ↑ JOSEPH, Wang. Electrochemical glucose biosensors. *Chemical reviews* [online] . 2008, vol 108, no. 2, pp. 814-825, also available from < <https://pubs.acs.org/action/cookieAbsent> >. ISSN 0009-2665.
6. ↑ HELLER, Adam and Ben FELDMAN. Electrochemical glucose sensors and their applications in diabetes management. *Chemical reviews* [online] . 2008, vol 108, no. 7, pp. 2482-2505, also available from < <https://pubs.acs.org/action/cookieAbsent> >. ISSN 0009-2665.
7. ↑ Recommended procedure. *Diabetes mellitus - laboratory diagnosis and monitoring of patients* . 2015. Also available from URL < http://www.cskb.cz/res/file/doporuceni/DM/DM_dop_201601.pdf >.
8. ↑ Recommended procedure. *Recommended diagnostic and therapeutic procedures for general practitioners* . 20th. Also available from URL < <https://www.svl.cz/files/files/Doporucene-postupy/2020/DIABETES-MELLITUS-2020.pdf> >.
9. ↑ KAREN, Igor and Štěpán SVAČINA. *Diabetes mellitus: recommended diagnostic and therapeutic procedures for general practitioners 2018*. - edition. Society of General Medicine of the Czech Medical Association JEP, 2018. ISBN 9788086998992 .
10. ↑ Recommended procedure. *Recommended procedure for the treatment of type 2 diabetes mellitus* . 2016. Also available from URL < http://www.diab.cz/dokumenty/doporuceni_DM_2015-2.pdf >.
11. ↑ Recommended procedure. *Diabetes mellitus - laboratory diagnosis and monitoring of patients* . 2015. Also available from URL < http://www.cskb.cz/res/file/doporuceni/DM/DM_dop_201601.pdf >.
12. ↑ MURRAY, Robert K, Daryl K GRANNER and Victor W RODWELL. *Harper's Illustrated Biochemistry*. 27th edition. New York: Lange Medical Books / McGraw-Hill, 2006. 692 pp. A Lange medical book; pp. 190-194. ISBN 978-0-07-125300-0 .
13. ↑ Jump up to: a b HOHENBERGER, EF and H KIMLING. *Compendium urinalysis. Urinalysis with test strip* [online] . 1st edition. Mannheim: Roche Diagnostics, 2008. 105 pp. Also available from < <http://www.diavant.info/diavant/servlet/MDBOutput?fileId=1392> >.
14. ↑ PLIVA-Lachema Diagnostics. *PHAN® diagnostic urine test strips* [online]. Last revision 2009-12-04, [cit. 2010-03-21]. < <https://www.erbalachema.com/cz/> >.

Category :

- Biochemistry

- Pathobiochemistry
- Physiology
- Endocrinology
- Internal Medicine
- Pathophysiology
- Pathology
- Obstetrics
- Clinical biochemistry
- Nephrology

