

# Second upper Molar

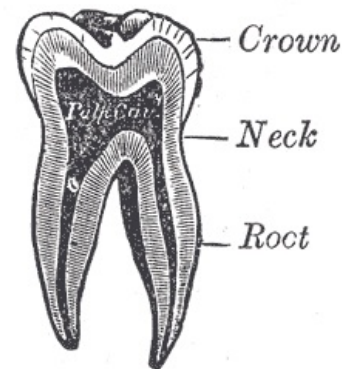
Similar in shape to first upper molar, but smaller (crown width 9.5mm, root length 11.5mm, tooth length 18.5mm). It belongs to the Voldrich class I pillar.

The **occlusal surface** is usually tetrahedral in shape, differing only in size from the first upper molar. However, a three-peaked form is often found. The palatine tubercle forms only one tubercle on the occlusal plate and is the largest of all the tubercles. The palatine surface is very narrow and convex. The distopalatine bump disappears.

The **roots** are usually three, placed as in the first upper molar (two buccally, one palatally). However, they tend to be closer together. Sometimes they may unite to form a single root. They are shorter and less curved.

The **pith cavity** is cylindrical, mesiodistally sheathed.

**Root canals'** tend to be three narrow ones. The interbuccal canal is poorly accessible.



Schema chair

## References

### Related articles

- Morphology of teeth

### References used

- JANSOVÁ, K a M EBER. *Preklinická stomatologie : I. část - morfologická. 2.*, dopl vydání. Olomouc : Univerzita Palackého, 1996. 72 s. ISBN 80-7067-596-9.
- ČIHÁK, Radomír a Miloš GRIM. *Anatomie. 2. upr. a dopl vydání.* Praha : Grada Publishing, 2002. 470 s. sv. 2. ISBN 80-247-0143-X.