

# Scalene Fissure

**English:** *Scalene fissure*  
**Latin:** *Fissura scalenorum*



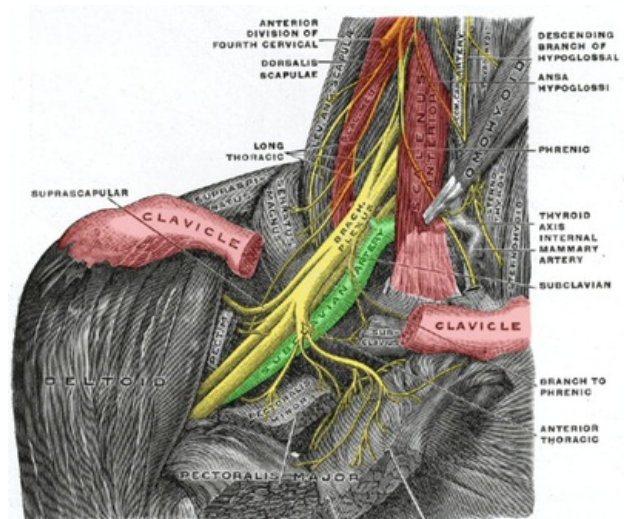
The **Scalene fissure** is a triangular hiatus found in the neck.

## Borders

- **Anteriorly:** Scalenus anterior
- **Posteriorly:** Scalenus medius
- **Caudally:** First rib

## Contents

- Brachial plexus
- Subclavian artery
- Subclavian vein (anterior to the triangle)



Scalene fissure (borders in red)

## Links

## Bibliography

- GRIM, Milos – DRUGA, Rastislav. *Zaklady anatomie 5 : Anatomie krajín tela*. 1. edition. 2002. ISBN 978-80-7262-179-8.