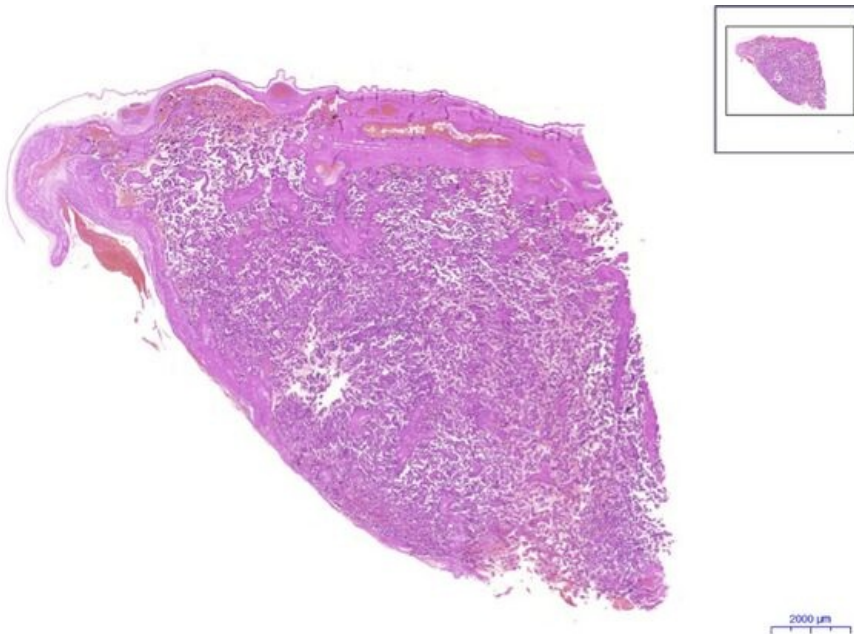


Placenta - HE

Placenta, HE 0,4x



Placenta:

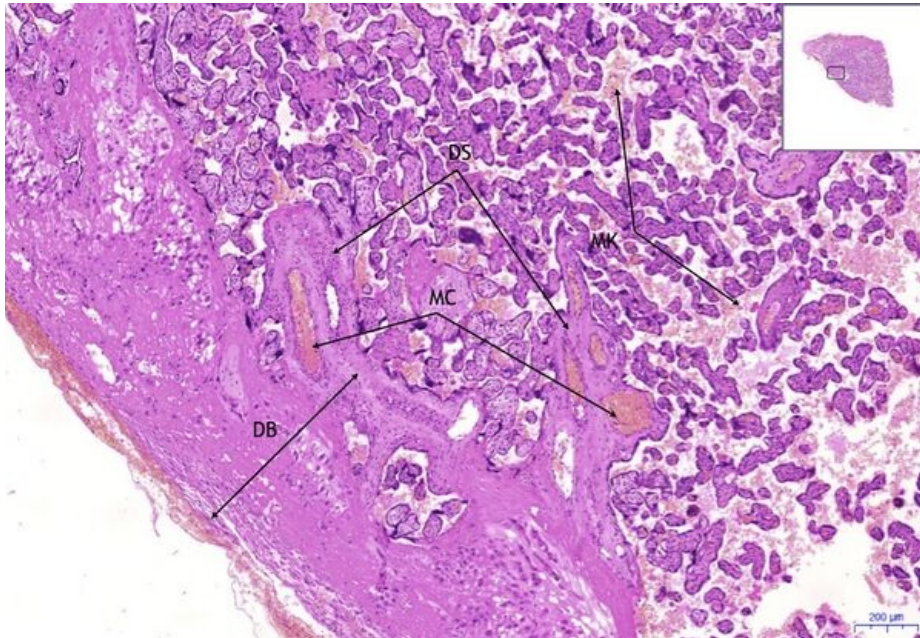
Placenta, HE 1,9x



Placenta:

- 1) EA - amnion epithelium
- 2) CHP - chorionic plate
- 3) VPC - umbilical cord vessels branches
- 4) IVP - intervillous space
- 5) CHK - chorionic villus
 - a) CHPK - primary chorionic villus
 - b) CHKS - secondary chorionic villus
 - c) CHKT - tertiary chorionic villus

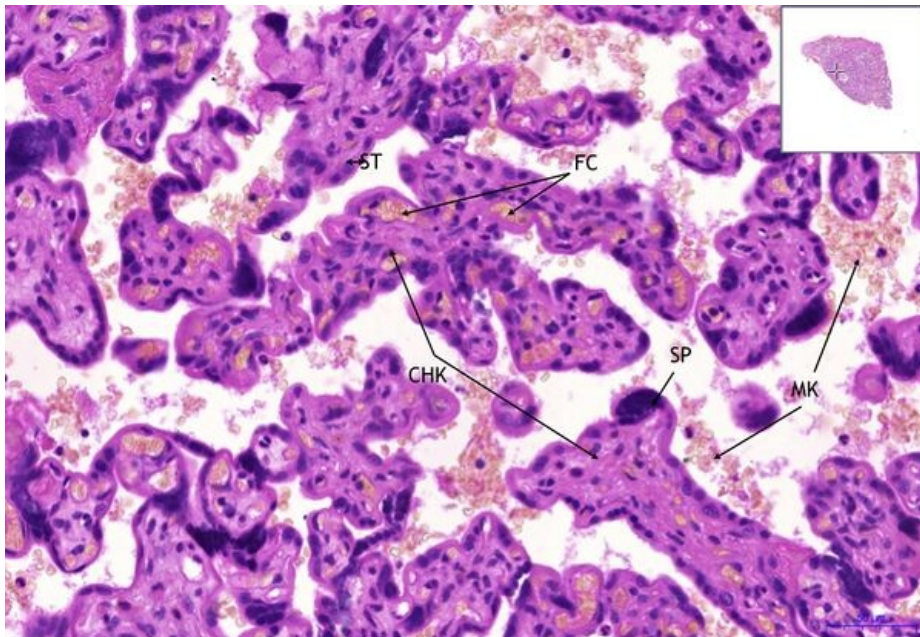
Placenta, HE 3,5x



Placenta:

- 1) **DS** - decidual septa
- 2) **MC** - mother's blood vessels
- 3) **MK** - mother's blood
- 4) **DB** - decidua basalis

Placenta, HE 20x



Placenta:

- 1) **CHK** - chorionic villus
- 2) **MK** - mother's blood
- 3) **FC** - fetal blood vessels (with erythrocytes)
- 4) **SP** - syncytial bud
- 5) **ST** - syncytiotrophoblast

Navigation

Navigace: Plodové obaly / Fetal membranes

← Preparát
X2

Seznam
preparátů

Preparát X4
→