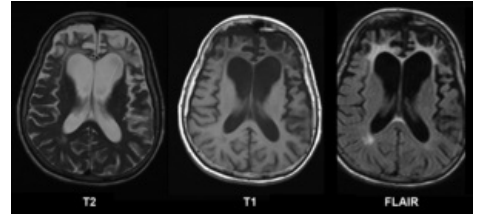


Pick's disease



It is a form of frontotemporal lobar dementia. It is manifested by significant behavioral disorders and prefrontal syndrome. In severe stages, cognitive disorders also appear. ^[1] It is a degenerative brain disease affecting mainly cortex. It is a selective atrophy of the frontal (→ mental changes) and temporal (→ deafness) lobes. In the microscopic picture, Pick bodies are visible in the neurons. It starts mainly in the period before old age (50s-60s), often occurs in families. At the beginning, there are no changes in cognitive functions, but disorders of personality and emotionality – the so-called moriatic mood (euphoria with inappropriate joking, hypersexuality, deviation, overeating, hyperphagia).



Pick's disease (MRI)

Links

References

- BENEŠ, Jiří. *Studijní materiály* [online]. [cit. 2009]. <<http://jirben.wz.cz>>.

References

1. JIŘÍ, Raboch, – PAVEL, Pavlovský,. *Psychiatrie*. - edition. Karolinum Press, 2013. 468 pp. ISBN 9788024619859.