

Perichondrium

The perichondrium represents the fibrous and nutritious covering of the cartilage.

- Strengthens the cartilage and prevents excessive bending.
- It consists of 2 components:
 - **external** = *rigid disordered collage*. ligament; strengthens cartilage; prevents cracking during bending;
 - **internal** = *sparse collagen*. tissue rich in blood vessels; contains progenitor cells; nourishes the cartilage.

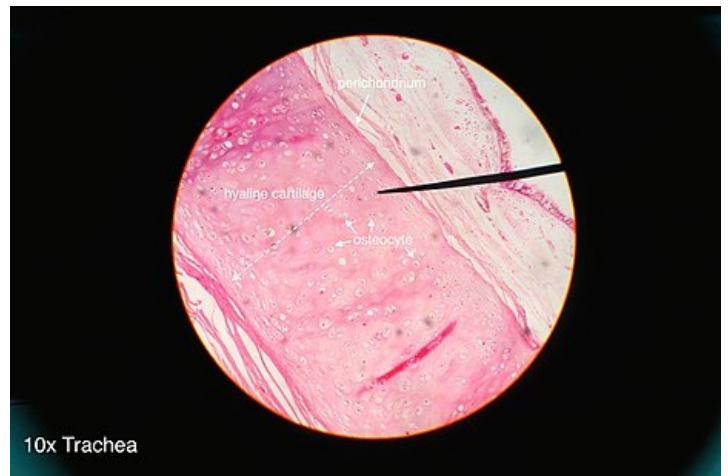
Links

Related articles

- Cartilage

References

- KLIKA, Eduard. *Histology : national textbooks for medical faculties*. 1. edition. Prague : Avicenum, 1986.



Cut through the trachea. The perichondrium presses directly on the part of the hyaline cartilage itself.