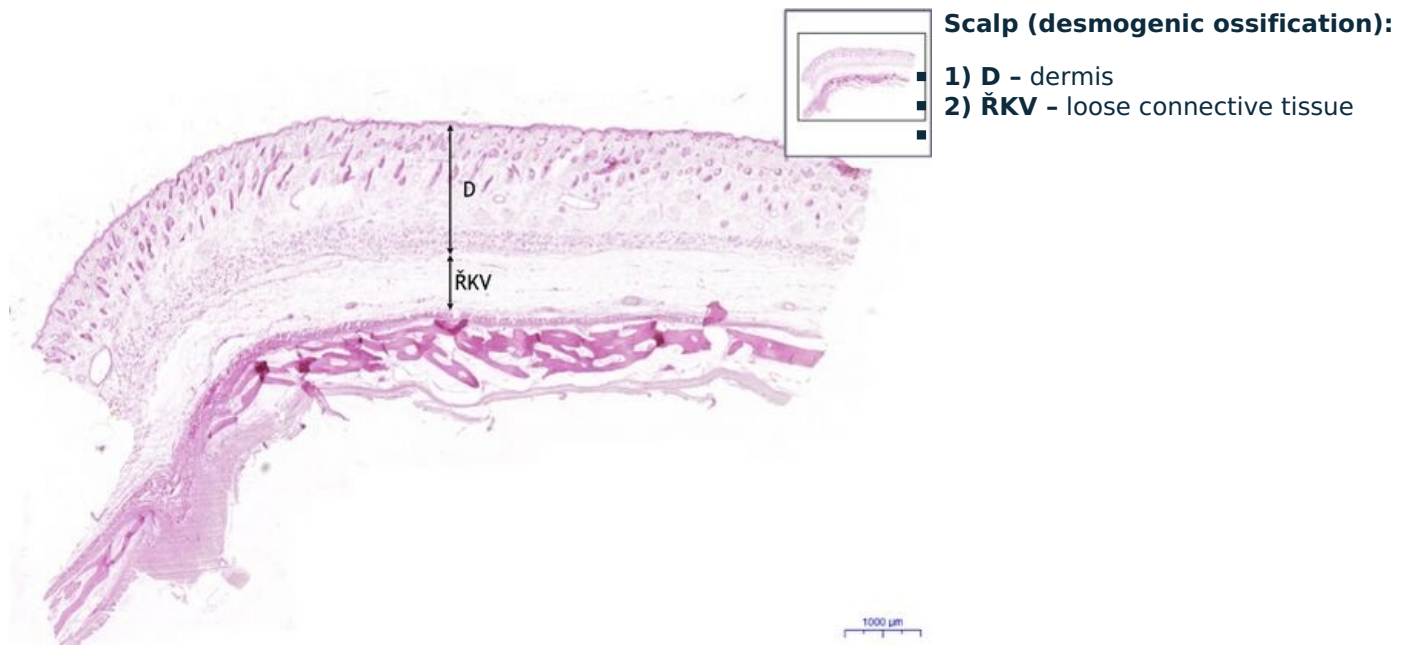
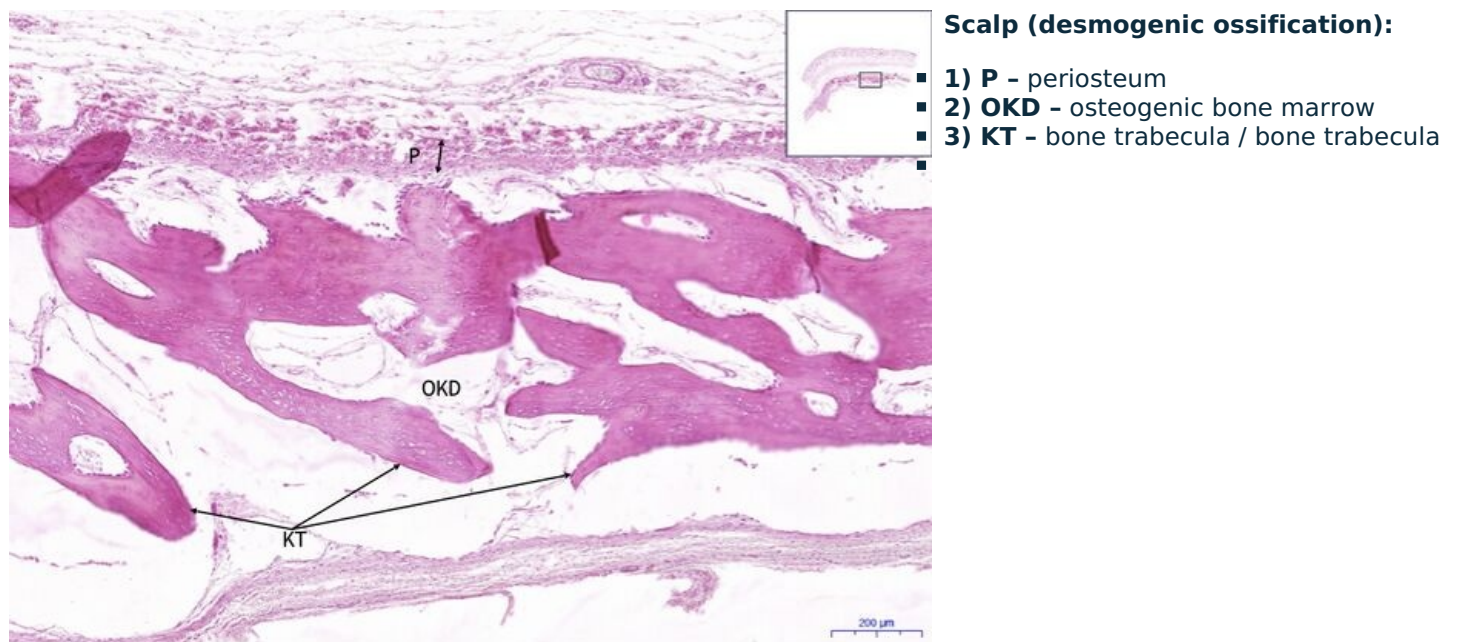


Ossificatio membranacea - HE

Scalp (desmogenic ossification) / Scalp (desmogenic ossification) - HE, 0.8x



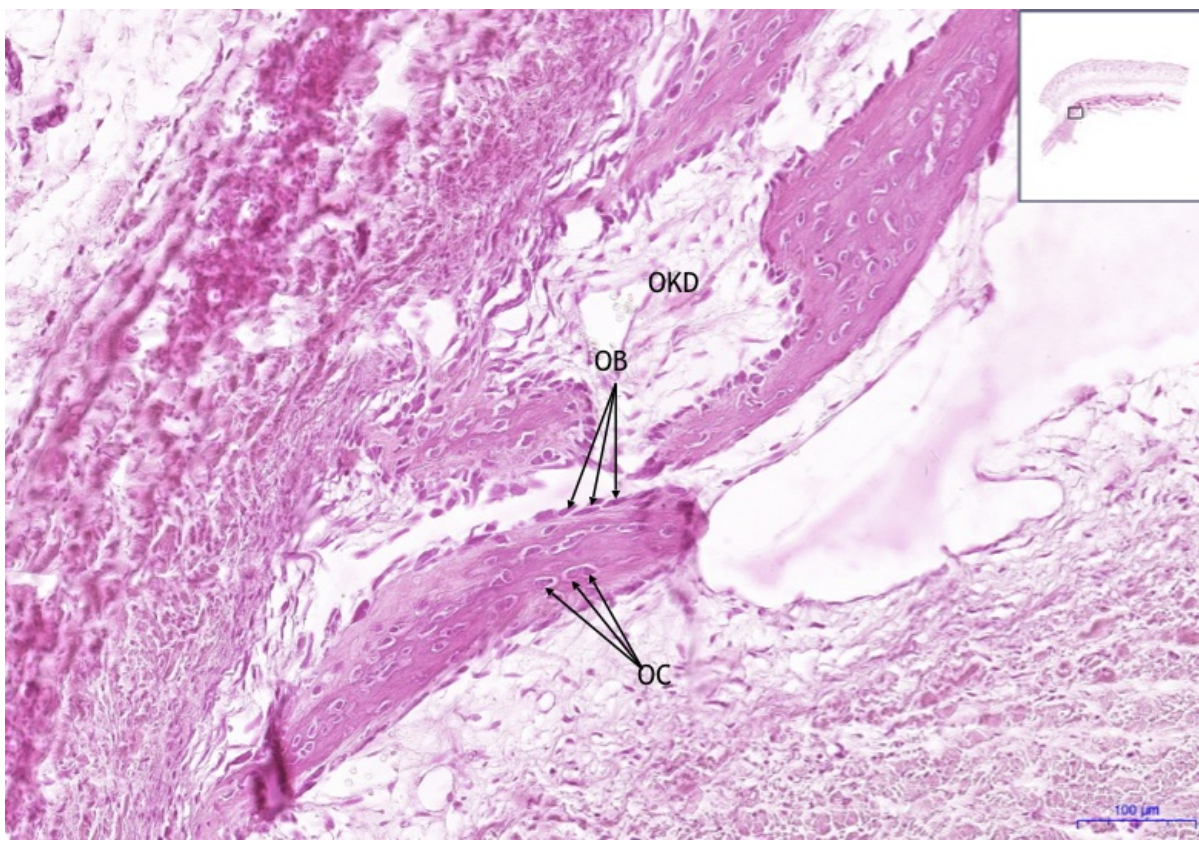
Scalp (desmogenic ossification) / Scalp (desmogenic ossification) - HE, 5x



Scalp (desmogenic ossification) / Scalp (desmogenic ossification) - HE, 10x

Scalp (desmogenic ossification):

- 1) OKD - osteogenic bone marrow
- 2) OB - osteoblast
- 3) OC - osteocyte/ osteocyte



Scalp (desmogenic ossification) / Scalp (desmogenic ossification) - HE, 20x



Scalp (desmogenic ossification):

- 1) OB - osteoblast
- 2) OC - osteocyte/osteoclast
- 3) KM - bone matrix / bone matrix
- 4) OCL - osteoclast
- 5) OS - osteoid
- 6) C - blood vessel

Navigation

Connective and supporting tissue

← Preparation
no. 27

List of
preparations

Preparation
No. 29 →