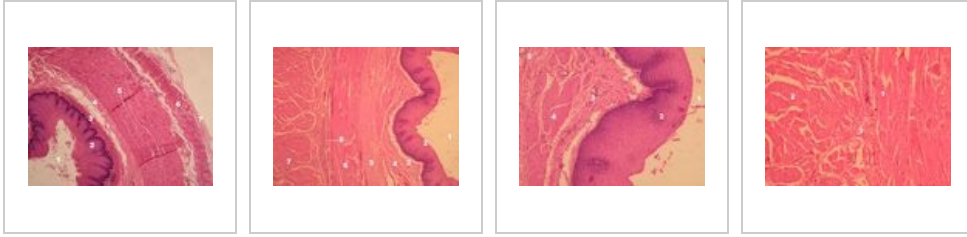
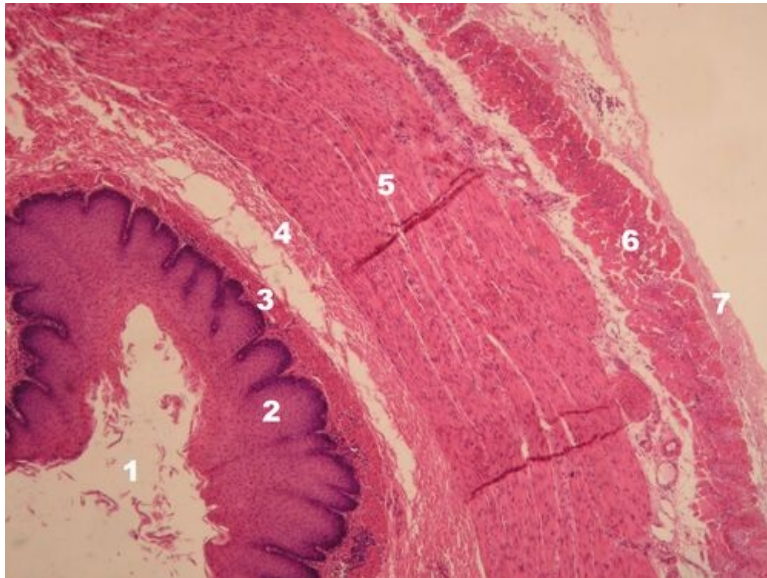


Oesophagus (SFLT)

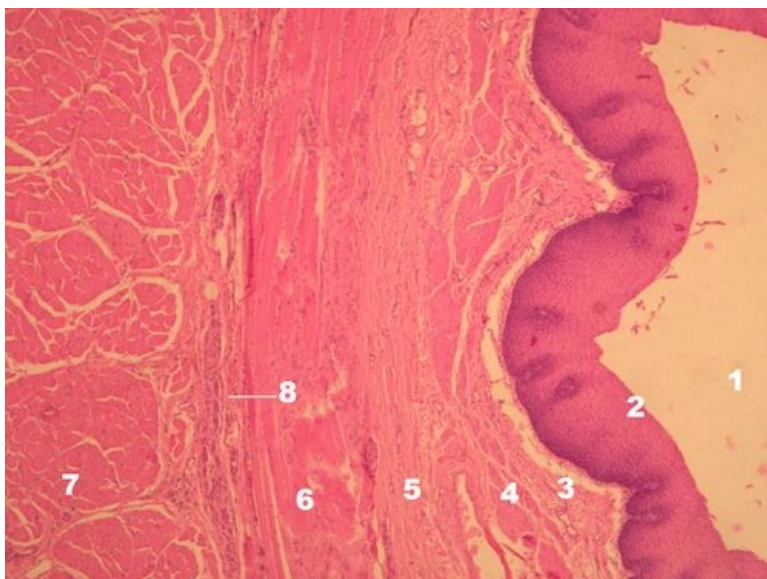


Oesophagus - transverse section, clear magnification (HE)



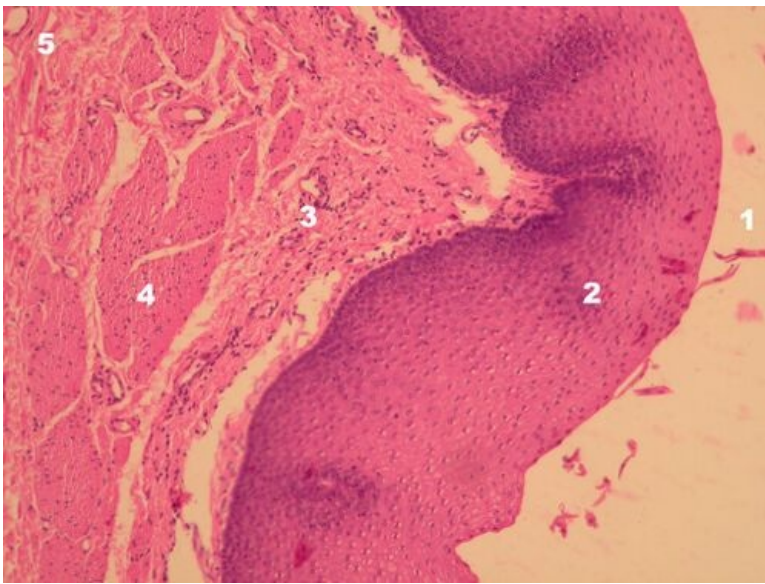
Description: 1 - lumen, 2 - multi-layered non-keratinizing squamous epithelium, 3 - lamina propria and lamina muscularis mucosae, 4 - submucosa, 5 - internal circular muscle, 6 - external longitudinal muscle, 7 - adventitia/serosa.

Oesophagus - wall layers (HE)



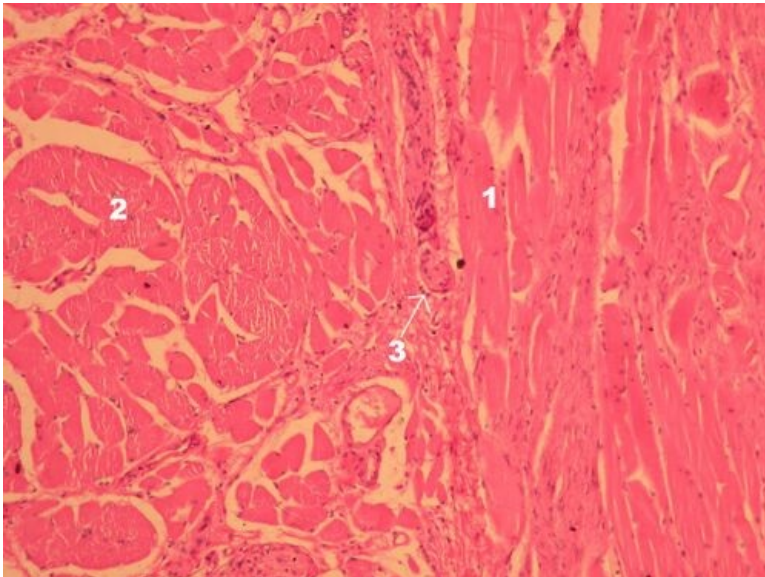
Description: 1 - lumen of the oesophagus, 2 - multi-layered non-keratinizing squamous epithelium, 3 - lamina propria mucosae, 4 - lamina muscularis mucosae, 5 - submucosa, 6 - smooth circular muscle on longitudinal section, 7 - smooth longitudinal muscle on a cross section, 8 - plexus myentericus.

Oesophagus - wall layers (HE)



Description: 1 - lumen, 2 - multi-layered non-keratinized squamous epithelium, 3 - lamina propria mucosae, 4 - lamina muscularis mucosae, 5 - submucosa.

Oesophagus - wall layers (HE)



Description: 1 - internal circular smooth muscle, 2 - external longitudinal smooth muscle, 3 - myenteric plexus.

Gastrointestinal tract

- Tongue - Back (SFLT)
- Tongue - radix (SFLT)
- Tonsilla lingualis_(SFLT)
- gl. submandibularis (SFLT)
- Glandula parotis_(SFLT)
- gl. sublingualis (SFLT)
- Oesophagus (SFLT)
- Gaster - cardia (SFLT)
- Gaster - fundus (SFLT)
- Pylorus - duodenum (SFLT)
- Duodenum (SFLT)
- Small Intestine (SFLT)
- Colon (SFLT)

- Appendix (SFLT)
- Liver (SFLT)
- Gallbladder (SFLT)
- Pancreas (SFLT)

Links

- Histological atlas (3. LF UK)