

OZPP Module - Practice Number 7

This article was checked by pedagogue

This article was checked by pedagogue, but later was changed.

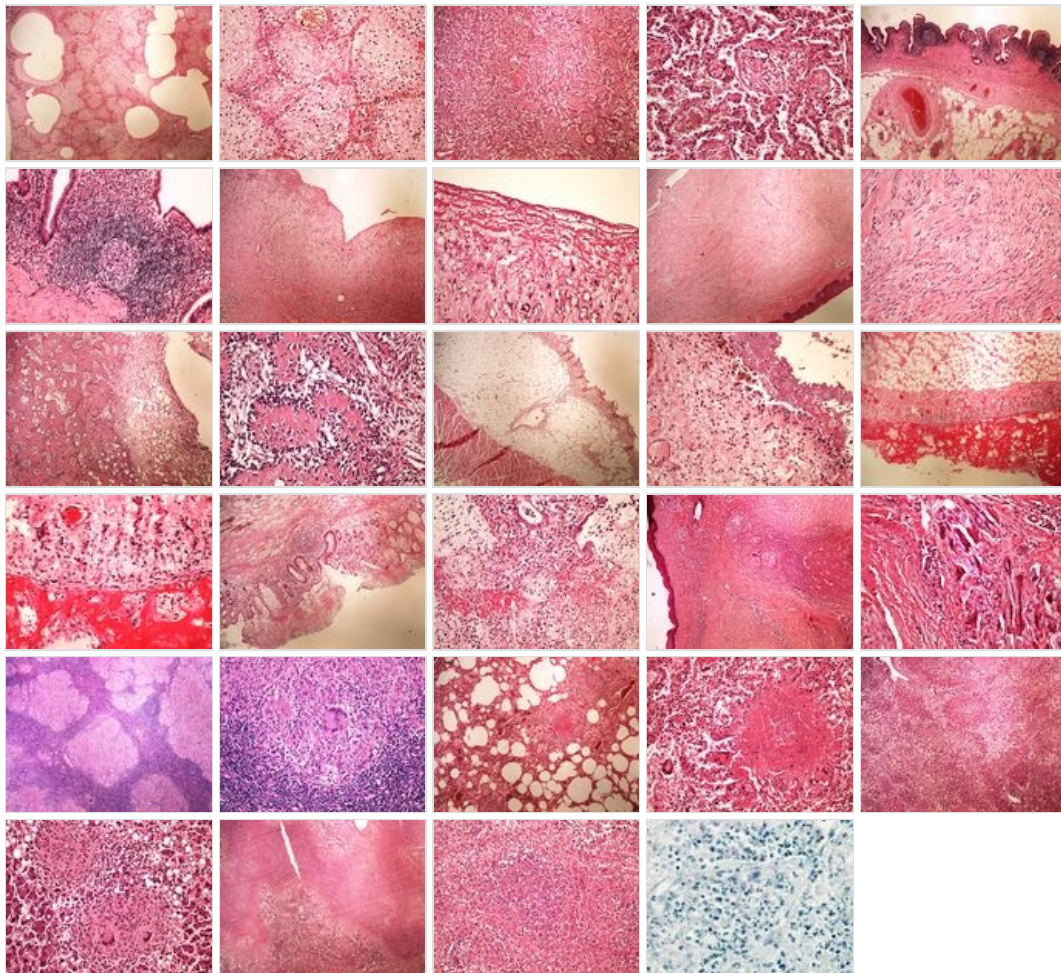


Checked version of the article can be found here (https://www.wikilectures.eu/index.php?title=OZPP_Module_-_Practice_Number_7&oldid=321133).

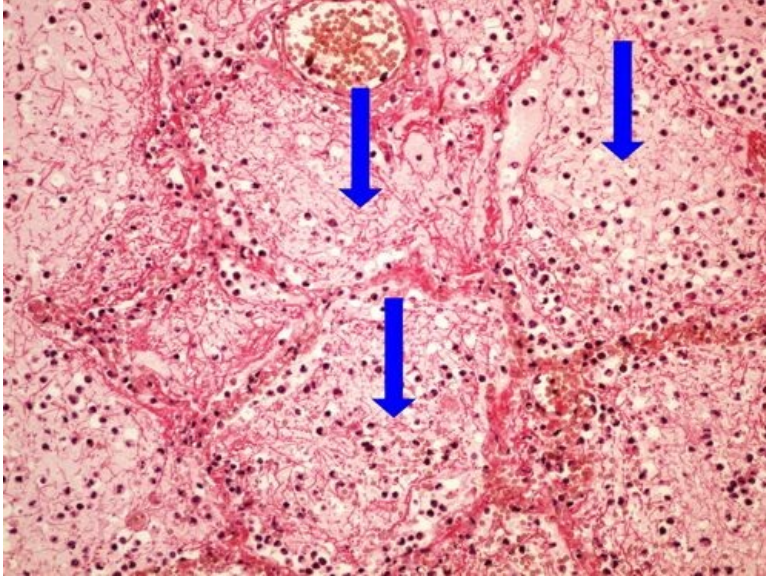
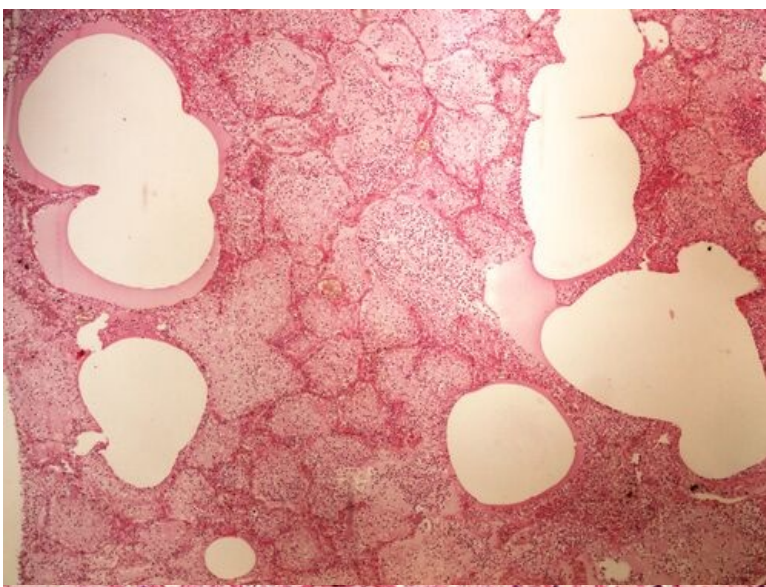
See also comparison of actual and checked version (https://www.wikilectures.eu/index.php?title=OZPP_Module_-_Practice_Number_7&diff=-&oldid=321133).



Overview



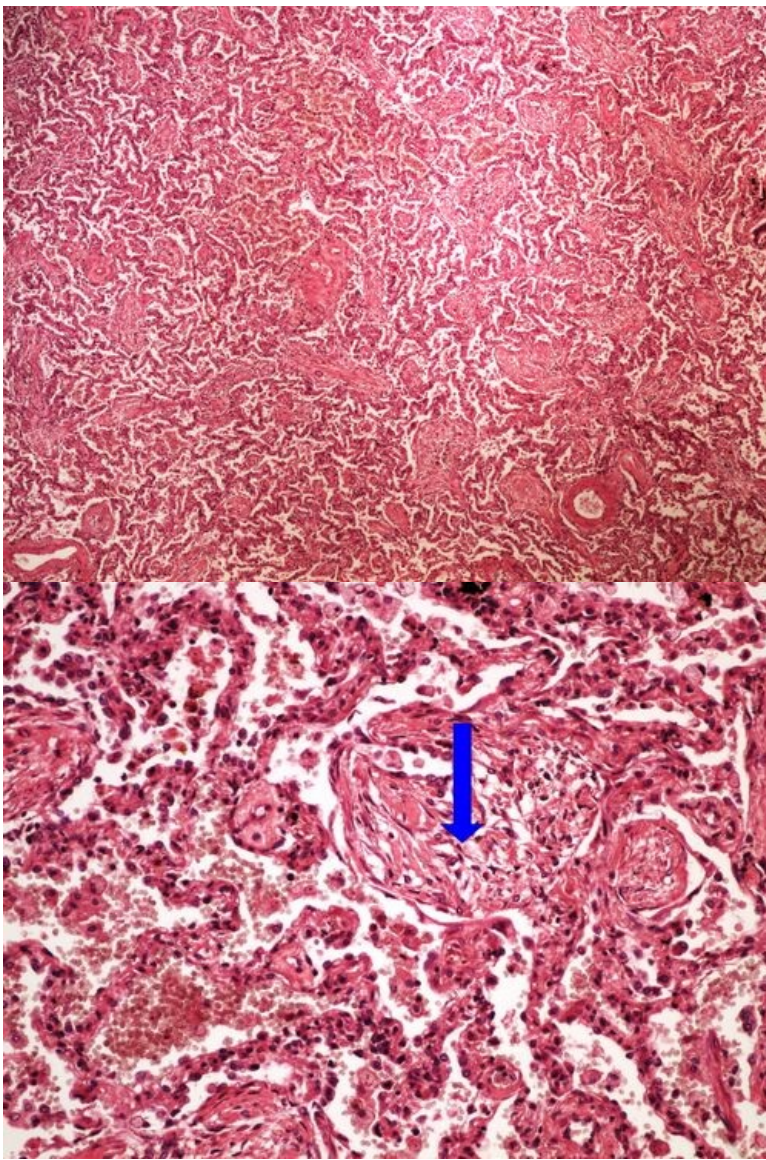
Preparation No. 1 and No. 2 - Lobar (Croupous) Pneumonia



Structures

[Expand]

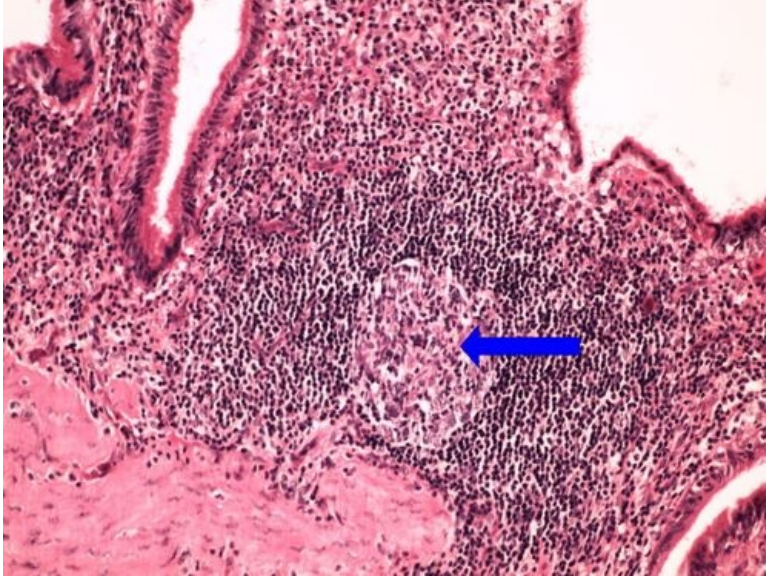
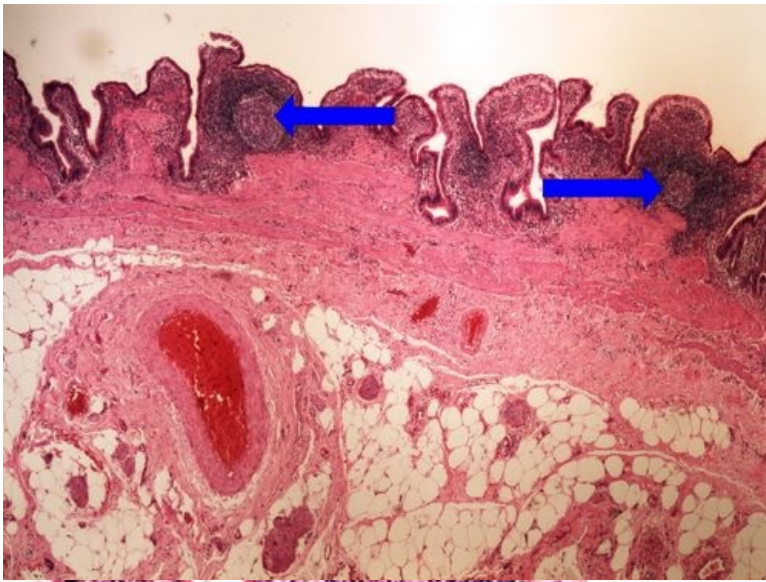
Preparation No. 3 and No. 4 - Lung Carnification



Structures

[Expand]

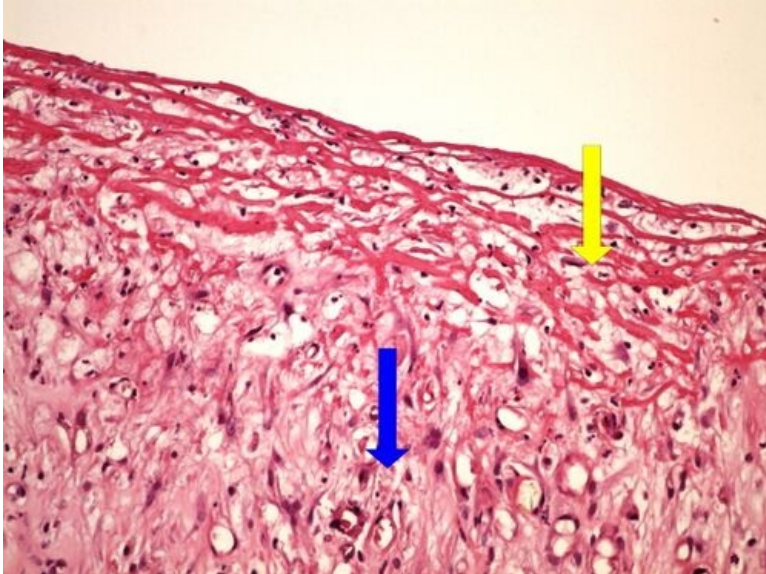
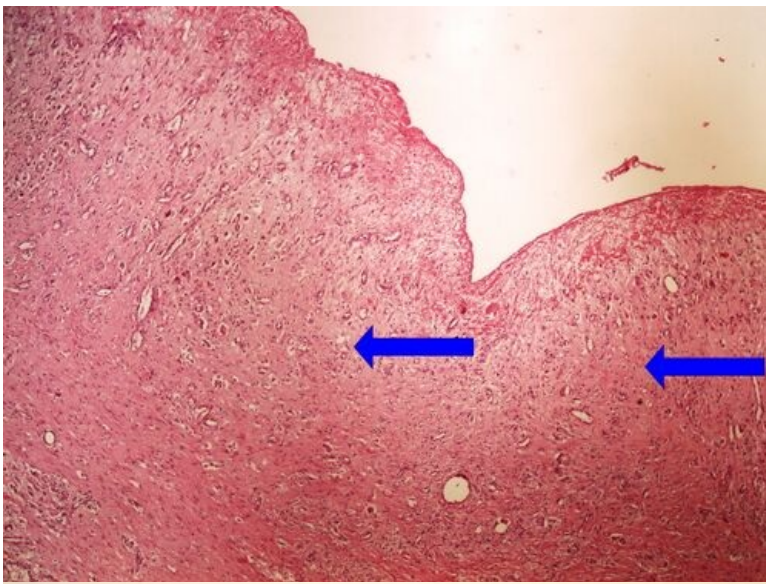
Preparation No. 5 and No. 6 - Chronic Cholecystitis



Structures

[Expand]

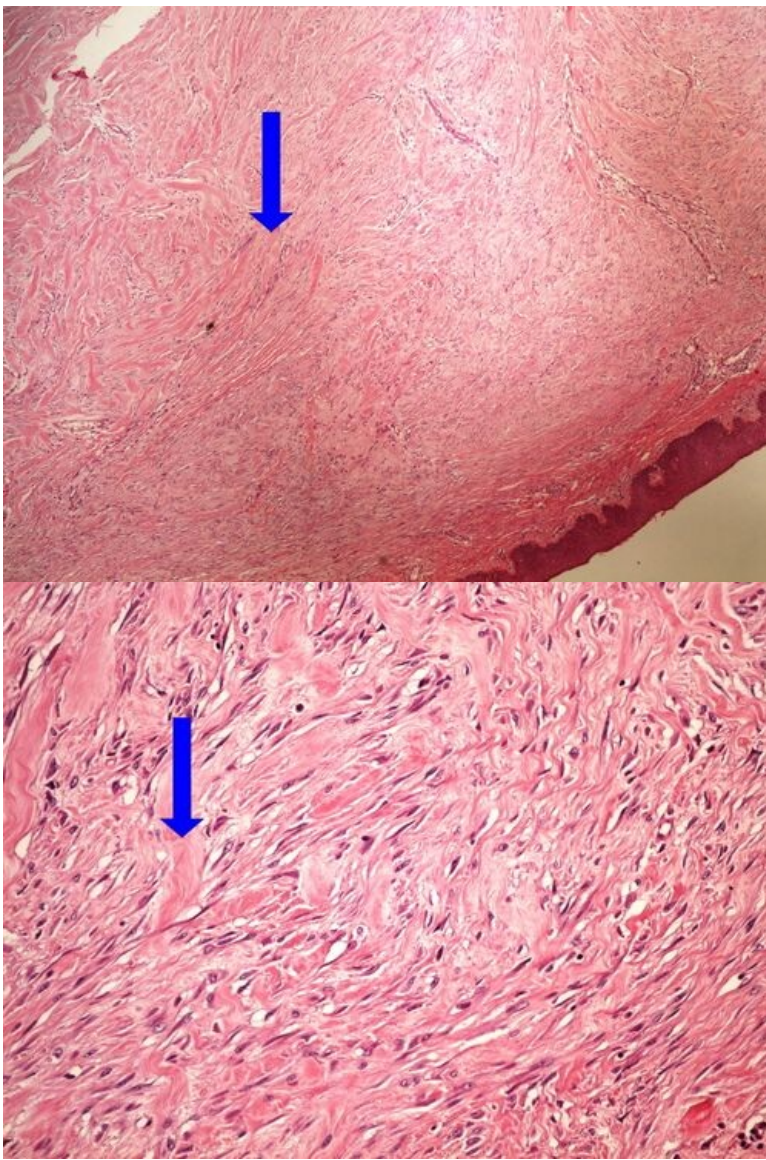
Preparation No. 7 and No. 8 - Granulation Tissue of the Base of a Venous Leg Ulcer



Structures

[Expand]

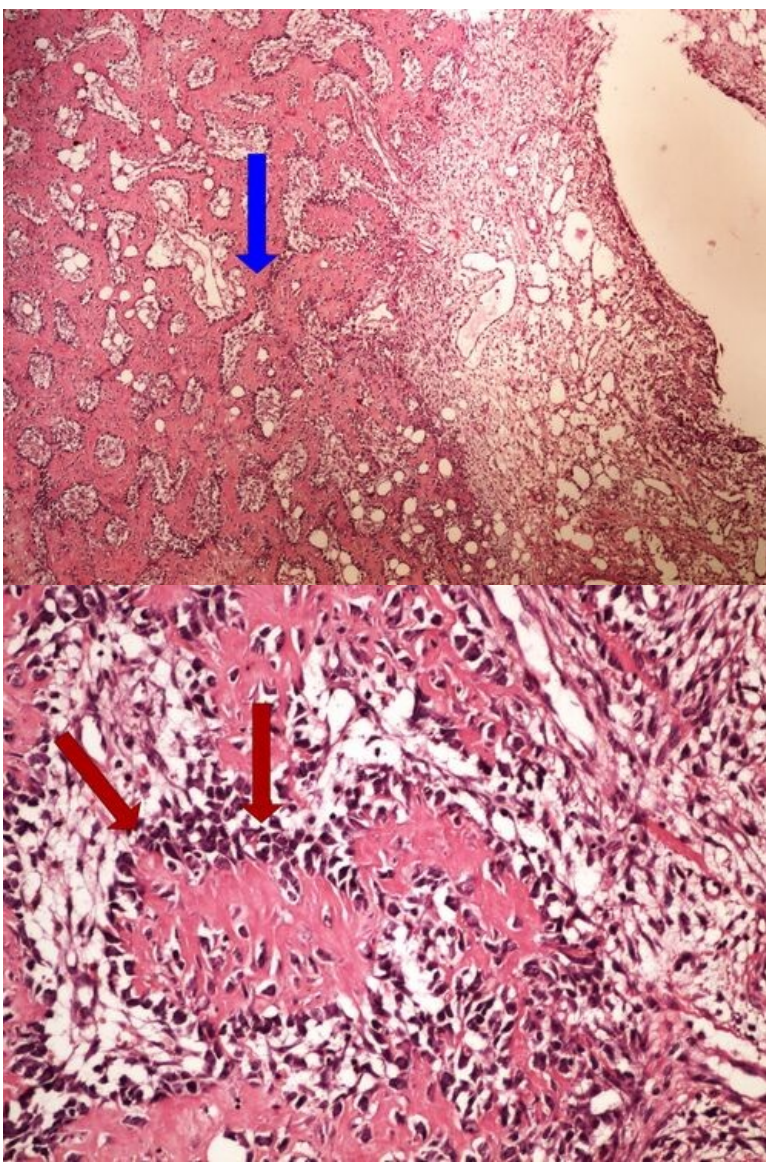
Preparation No. 9 and No. 10 - Keloid



Structures

[\[Expand\]](#)

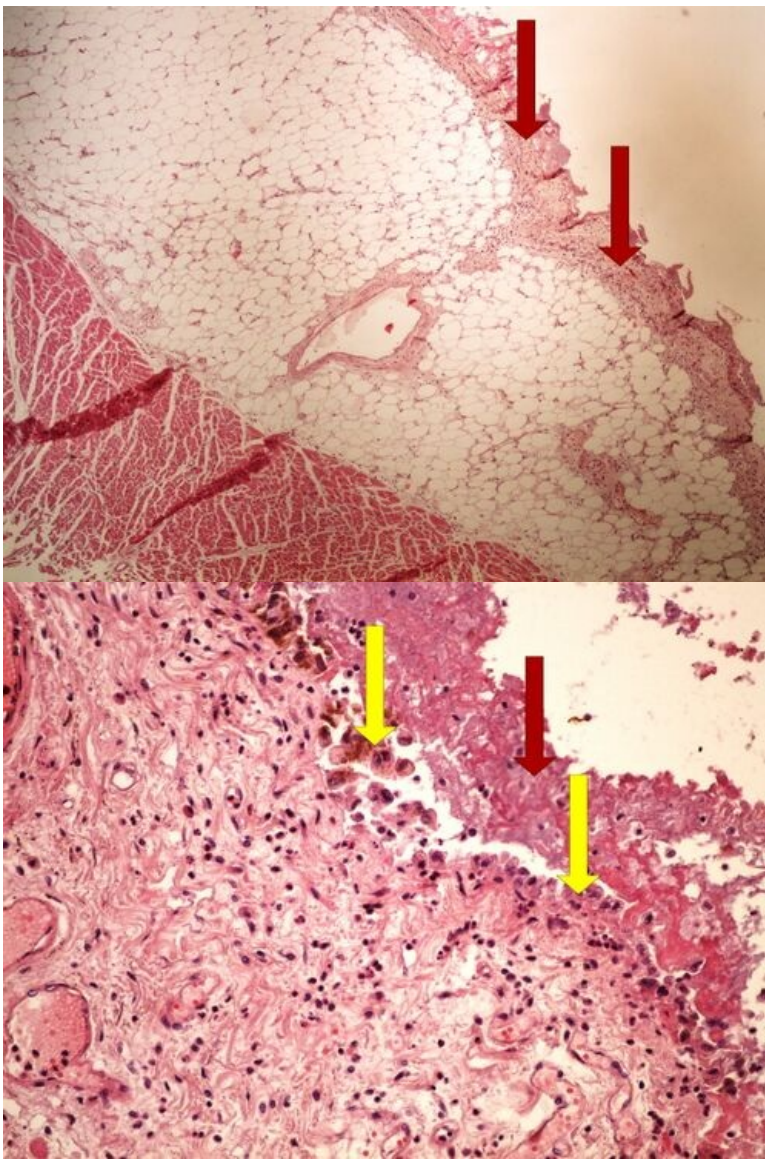
Preparation No. 11 and No. 12 - Healing of a Bone Fracture



Structures

[Expand]

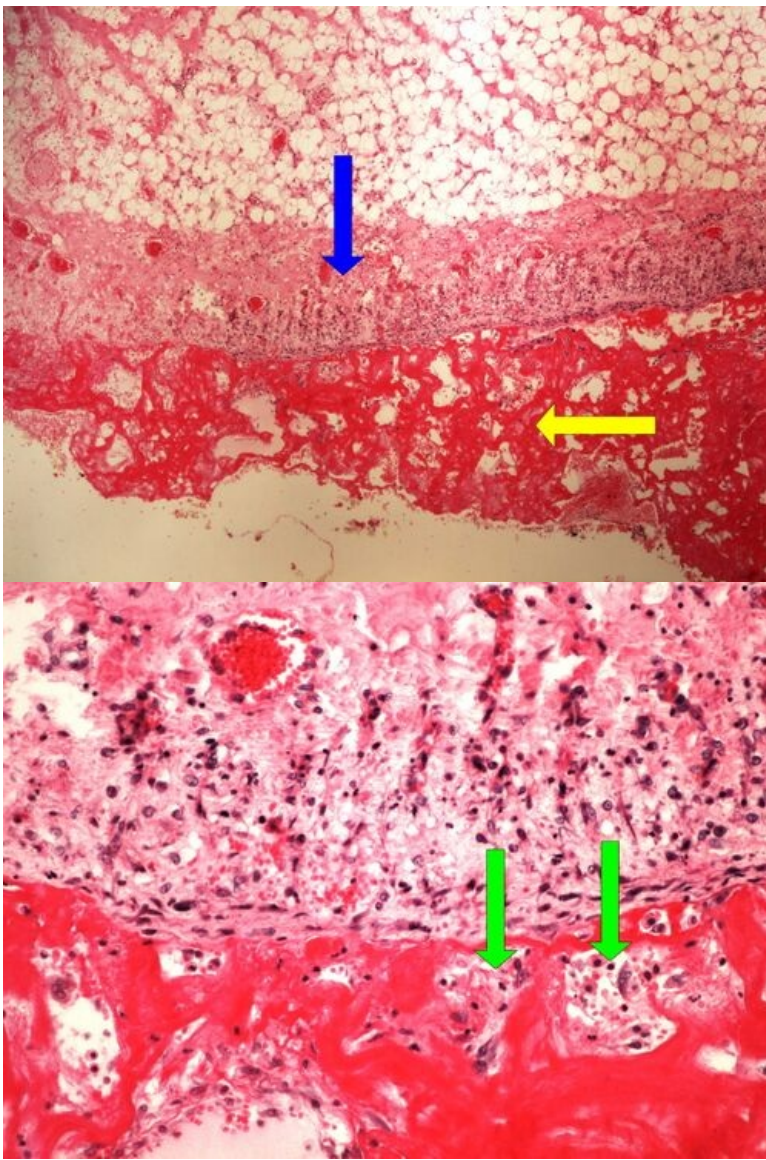
Preparation No. 13 and No. 14 - Acute Fibrinous Pericarditis



Structures

[Expand]

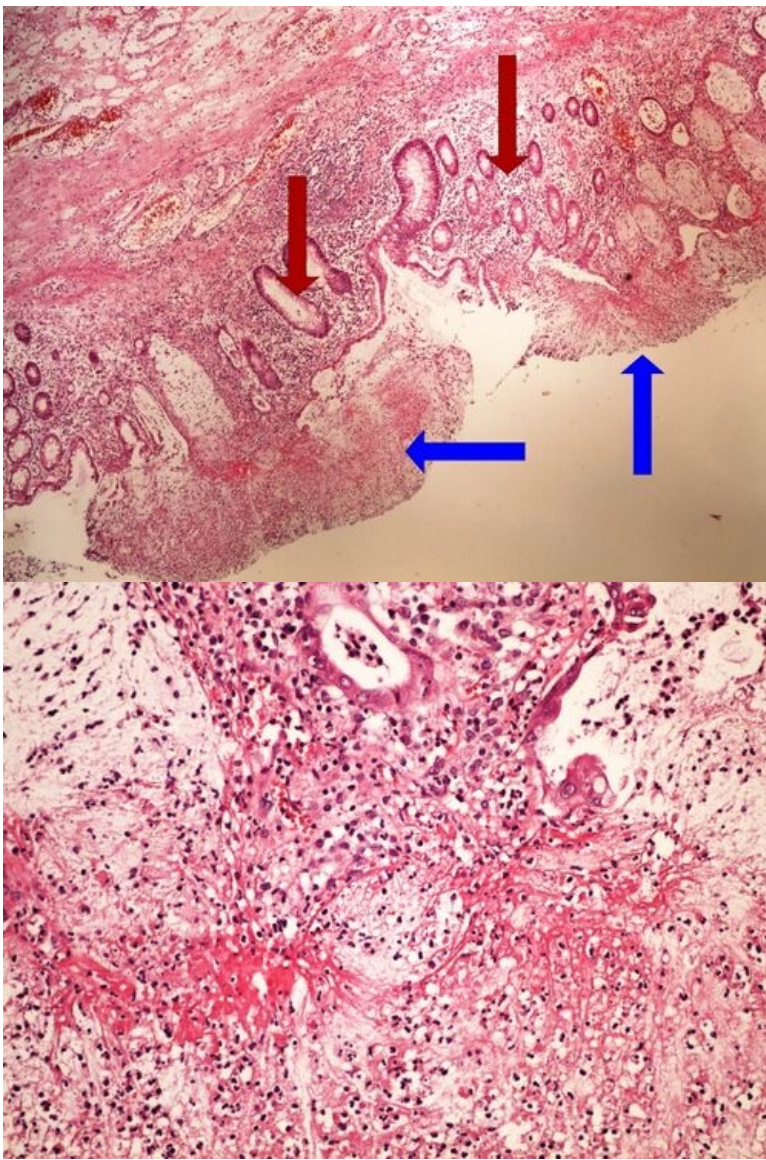
Preparation No. 15 and No. 16 - Chronic Fibrous Pericarditis



Structures

[Expand]

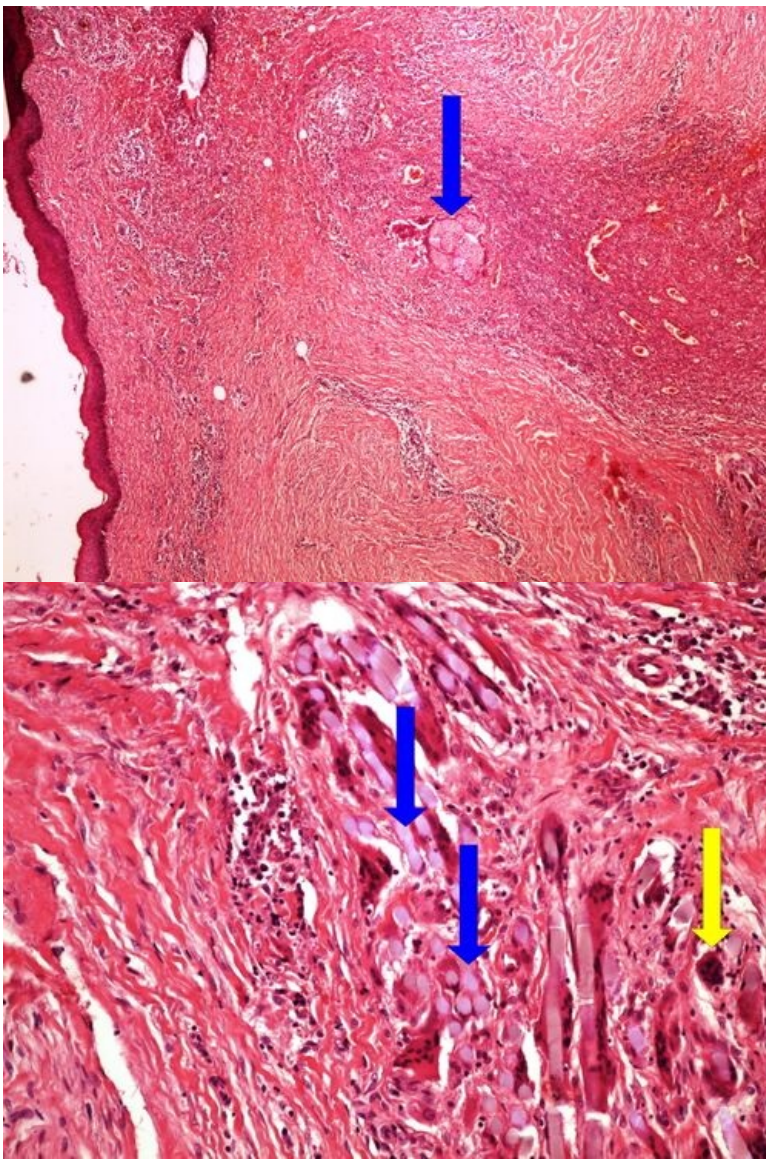
Preparation No. 17 and No. 18 - Pseudomembranous Colitis



Structures

[\[Expand\]](#)

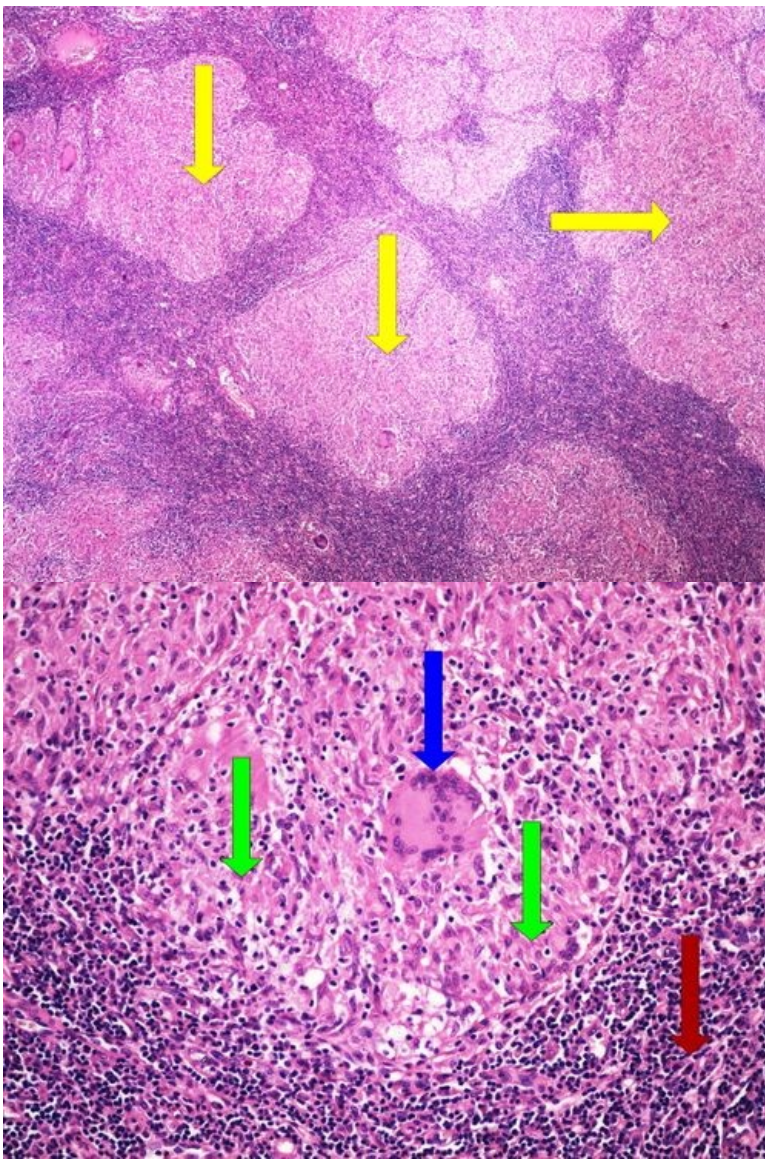
Preparation No. 19 and No. 20 - Giant Cell Granuloma



Structures

[Expand]

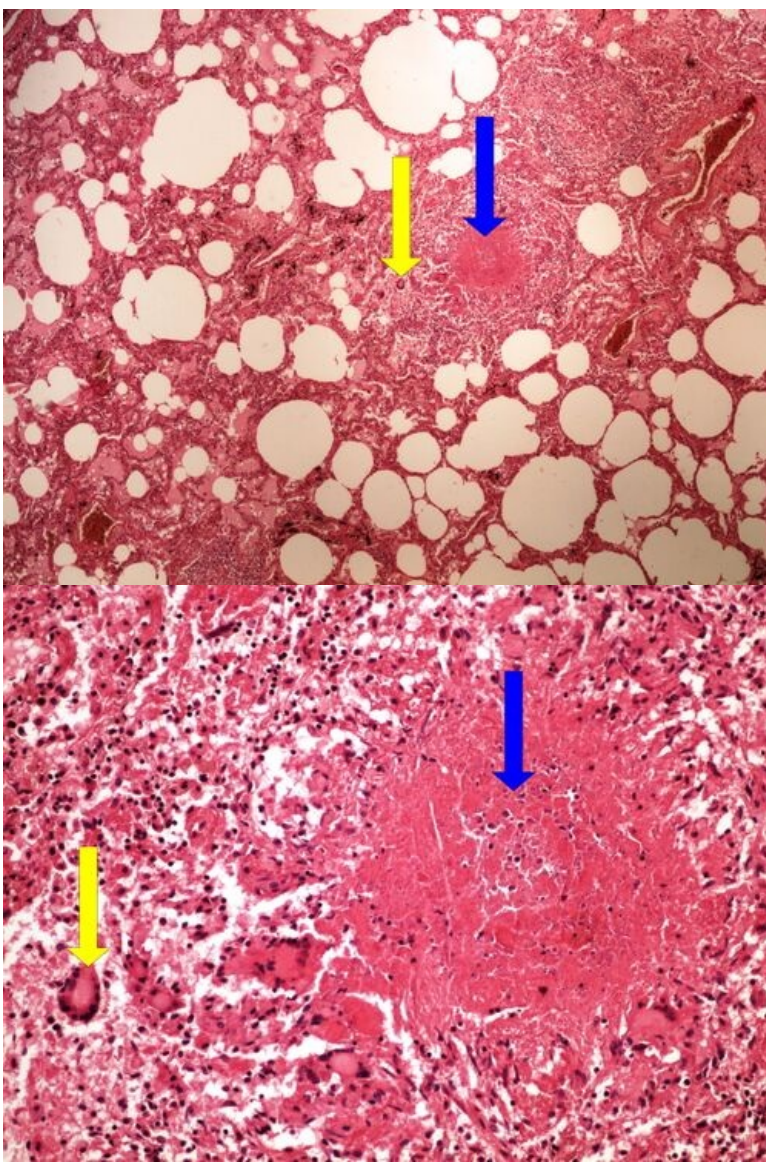
Preparation No. 21 and No. 22- Sarcoidosis



Structures

[Expand]

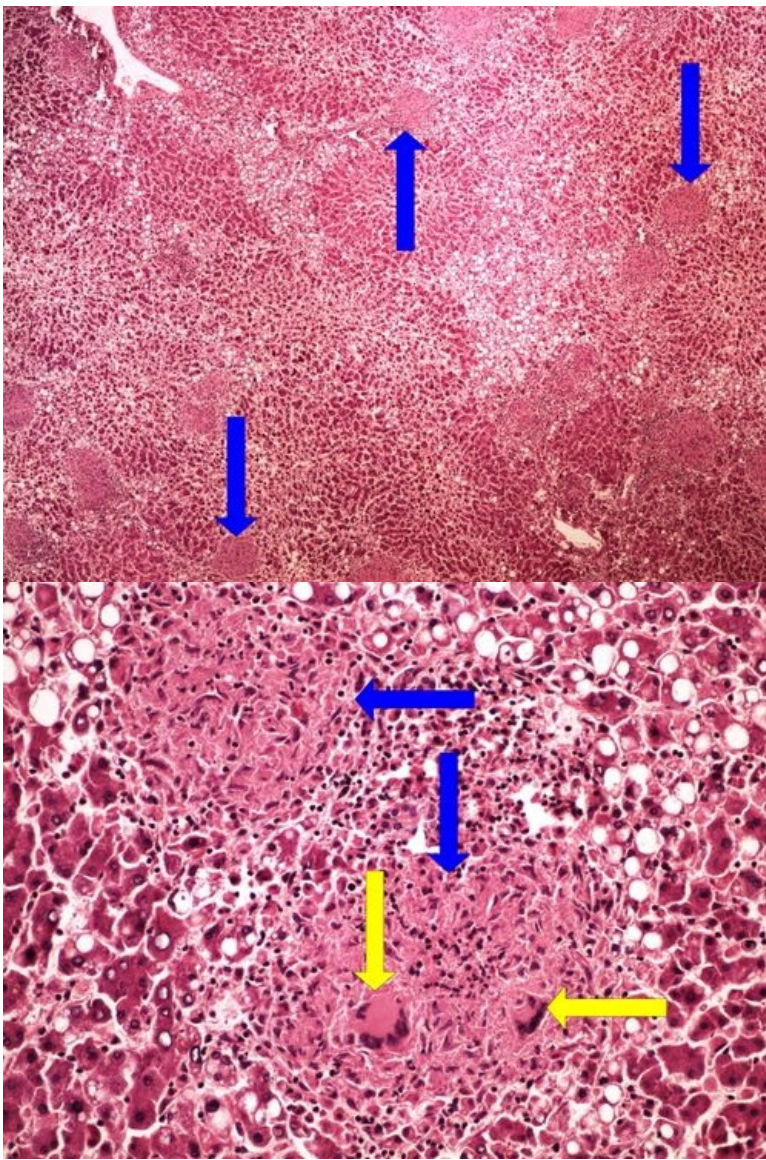
Preparation No. 23 and No. 24 - Miliary Tuberculosis of the Lungs



Structures

[\[Expand\]](#)

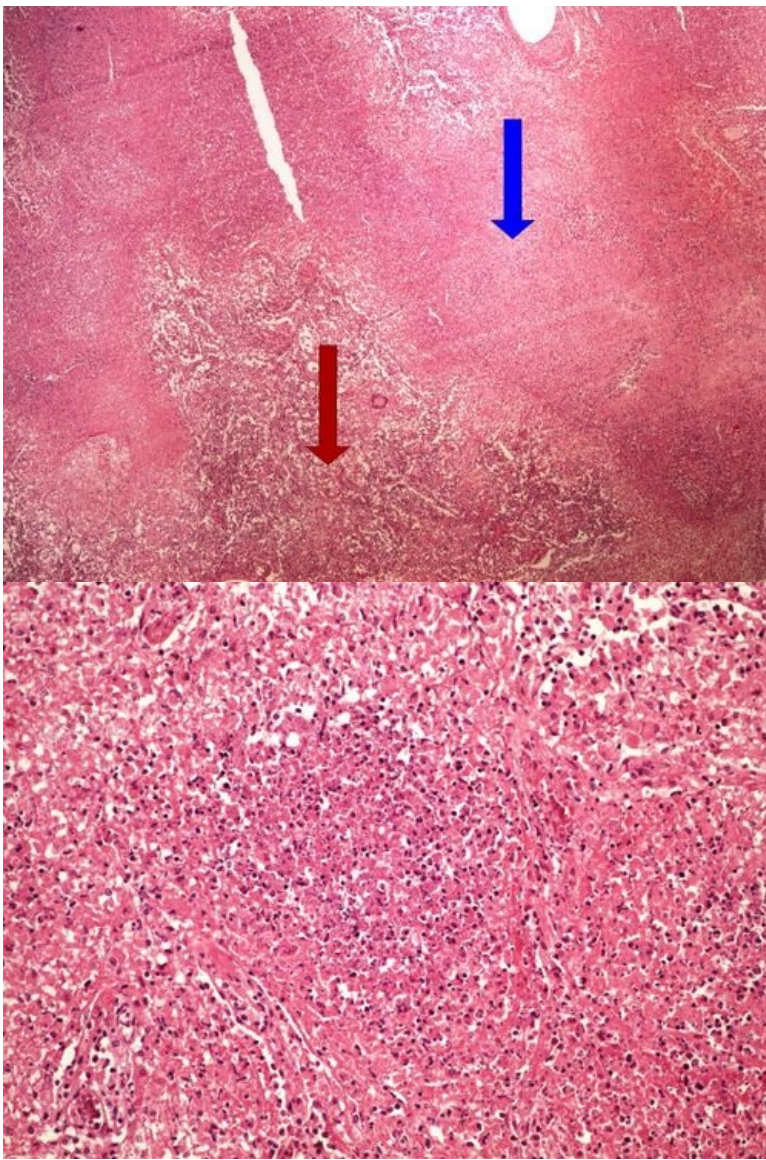
Preparation No. 25 and No. 26 - Miliary Tuberculosis of the Liver



Structures

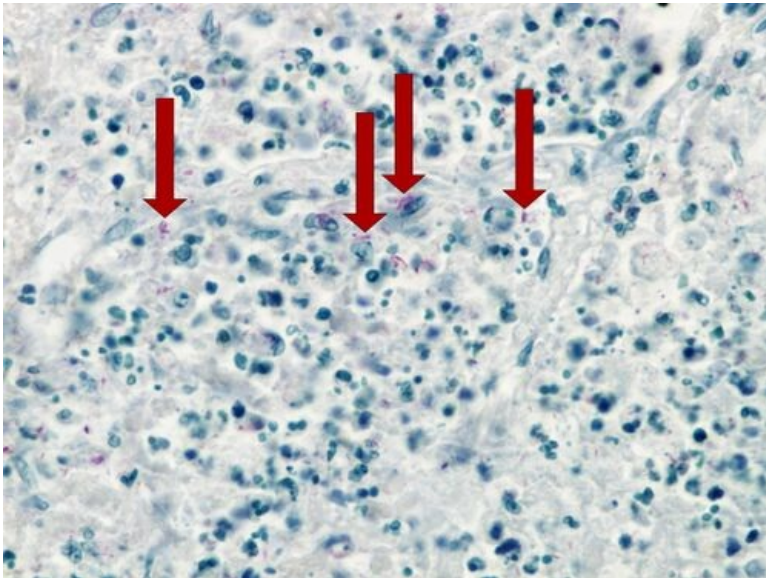
[Expand]

Preparation No. 27 and No. 28 - Caseous Pneumonia



Structures [\[Expand\]](#)

Preparation no. 29 - Casous Pneumonia (Ziehl Nielsen)



Structures [\[Expand\]](#)

Links

Navigation

