

# Normopressure Hydrocephalus

**Normal Pressure Hydrocephalus** (NPH) is a set of typical symptoms (ataxia, incontinence and dementia) caused by impaired cerebrospinal fluid circulation. It was first described in 1964 by Dr. Salomon Hakim.

## Etiology and Pathogenesis

As it was written above, NPH is caused by the flow disturbances of cerebrospinal fluid. The pressure in cerebrospinal fluid (CSF) ways is higher, the ventricles get bigger and it leads to **compression of brain tissue**. We recognize two types of hydrocephalus, according the connection of individual CSF parts – communicate and non-communicate. Normopressure hydrocephalus is a **noncommunicate** one.

The **causes of NPH** can be very variable. The most common are trauma, hypertension, meningitis or some intracranial bleeding. However, there is still many patients with idiopathic form of NPH.



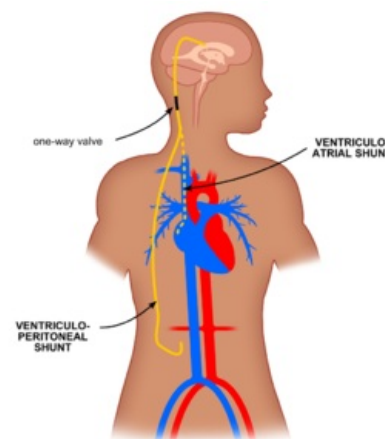
Enlarged brain ventricles

## Symptoms

There a special triad, called **Hakim´s trias**, which is absolutely essential for NPH:

1. dementia - *it is the only **treatable form of dementia**, but we have to properly diagnose it early*
2. incontinence
3. gait instability – *broad posture and a tendency to fall*

A typical patient with NPH is a man, at the age of 50 or more. The onset of disease is pretty slow and the first signs are connected with walk and stability. Dementia occurs lately and it is typically connected with behaviour changes.



Scheme of ventriculoperitoneal shunt

## Diagnosis

Despite the name, we can usually find slightly **increased pressure of cerebrospinal fluid** and also the brain ventricles appear enlarged. The test, which can really help us with our diagnosis is a trial draining of a small amount (under 50 ml) of liquor by lumbar puncture or lumbar drainage. If patient suffer from NPH, the major symptoms then start to improve very quickly (especially the gait).

Thanks to the problems with stability and gait, normal pressure hydrocephalus is sometimes mistakenly diagnosed as Parkinson´s disease. As compared with Parkinson´s disease, hydrocephalus has a huge advantage – **we can treat it** very well.

## Therapy

The method of choice is an **implantation of ventriculo-peritoneal shunt**, which serves as a permanent drainage of CSF from lateral ventricle to peritoneal cavity. This shunt normally leads under the skin of head, neck and chest. **The prognosis** of the patients is very good, after the surgery, but major is a matter of time. If we diagnose NPH at an early stage, it is possible to restore the damage.

## Links

### Related Articles

- Hydrocephalus
- Parkinson´s Disease
- Ataxia
- Hypertension
- Intracranial Bleeding
- Dementia
- Brain Ventricles
- Lumbar Puncture

- Meningitis

## **Bibliography**

- BEDNAŘÍK, AMBLER, RŮŽIČKA,, et al. *Klinická neurologie : část speciální I.* 1st edition. 2010. ISBN 978-80-7387-389-9.
- Hydrocephalus Association (<http://www.hydroassoc.org/hydrocephalus-education-and-support/normal-pressure-hydrocephalus/>)