

# Non-neoplastic lymphadenopathy

Lymphadenopathy is a very common finding, manifested by nodular enlargement. Enlarged nodules can indicate both completely benign and malignant diseases. Infectious diseases are the most common cause of nodular enlargement. The causative agents are - bacteria, viruses, parasites, or mycoses. According to the location and number of enlarged nodes, they are divided into two groups.

## Generalized lymphadenopathy

Generalized lymphadenopathy is defined as the enlargement of the nodules in two or more areas, arising from general infections. Generalized lymphadenopathies most often occur in diseases:

- Infectious mononucleosis
- Toxoplasmosis
- Brucellosis
- Syphilis - the second phase
- HIV infection

## Localized lymphadenopathy

### Bacterial

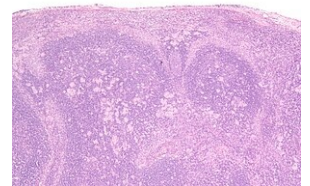
- Scarlet fever
- Streptococcal pharyngitis (Strep throat)
- Tularemia

### Viral

- Infectious mononucleosis
- Rubella
- Herpetic stomatitis

### Parasitic

- Toxoplasmosis



Toxoplasmosis lymphadenopathy

## Links

### Sources:

- STRÁTESKÝ, Jan. *Patologie*. 1. vydání. 2001. ISBN 80-86297-06-3.
- MEIDCIBÁZE, Medicibáze. *Lymfadenopatie u infekčních onemocnění* [online]. [cit. 2011-02-13]. <[http://www.medicabaze.cz/index.php?sec=term\\_detail&catId=16&cname=Infek%C4%8Dn%C3%AD+I%C3%A9ka%C5%99stv%C3%AD&letter=L&termId=1596&tname=Lymfadenopatie+u+infek%C4%8Dn%C3%ADch+onemo](http://www.medicabaze.cz/index.php?sec=term_detail&catId=16&cname=Infek%C4%8Dn%C3%AD+I%C3%A9ka%C5%99stv%C3%AD&letter=L&termId=1596&tname=Lymfadenopatie+u+infek%C4%8Dn%C3%ADch+onemo)>