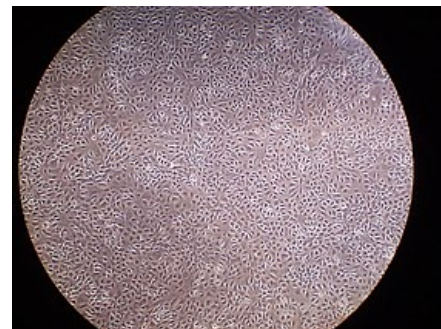


# Mesothelium

The mesothelium is a thin layer of squamous cell epithelium that covers some body cavities - pleura, peritoneum, pericardium and mediastinum.<sup>[1]</sup> The layer of mesothelium that covers the organ is called the *visceral* mesothelium, and from the side of the cavity it is the *parietal* mesothelium. The mesothelium is part of the **serosa**. The main function of mesothelial cells is **the production of fluid**, which ensures the smoothness, non-adherence and protection of the organs in question. The mesothelium also ensures **the transport** of e.g. leukocytes and growth factors in the serous cavity, extracellular proteins and others. A tumor arising from the mesothelium is called mesothelioma.



Mesothelial cells

## Links

### Related articles

- Epithelium
- Mediastinum
- Mesothelioma
- Pericardium
- Peritoneum
- Pleura

### References

1. MUTSAERS, Steven E. The mesothelial cell. *Int J Biochem Cell Biol* [online]. 2004, vol. 36, no. 1, p. 9-16, Available from <<https://www.ncbi.nlm.nih.gov/pubmed/14592528>>. ISSN 1357-2725.

### Sources

- VOKURKA, Martin – HUGO, Jan, et al. *Velký lékařský slovník*. 9. edition. Praha : Maxdorf, 2009. 1159 pp. ISBN 978-80-7345-202-5.
- LÜLLMANN-RAUCH, Renate. *Histologie*. 1. edition. Praha : Grada, 2012. 576 pp. ISBN 978-80-247-3729-4.