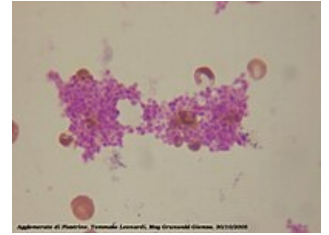


Lysosome-related organelles

- **LROs** stands for lysosome-related organelles, which are lysosome-like organelles that have membrane parameters of lysosomes and some of their enzymes, but only residual or zero degradation activity (unlike lysosomes).
- These organelles include:
 - Azurophilic granules of eosinophilic and neutrophilic granulocytes, the disorders of which lead, among other things, to intestinal diseases.
 - Melanosomes of melanocytes whose deficiency leads to a specific type of albinism.
 - Delta granules of platelets, the disorder of which leads to increased bleeding.
 - Lytic granule of NK cells and Tc lymphocytes, the disorder of which leads to immunodeficiency.
 - Secondary granules of pneumocytes II, whose disorder leads to pulmonary fibrosis.
 - Osteoclast lysosomes
- Syndromes with LRO include Chediak-Higashi syndrome and Hermansky-Pudlak syndrome.



An example of an LRO is a platelet delta granule