

# Lymphocyte



**A lymphocyte** is a type of white blood cell that is an agranulocyte. In the blood of a healthy adult, lymphocytes make up 24-40% of the total number of all white blood cells. Lymphocytes, which are divided into T and B cells, are an effective tool for specific immunities. <sup>[1]</sup>

## Links

### Related Articles

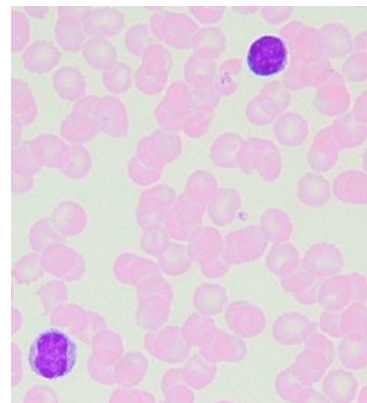
- B-lymphocyte ■ T-lymphocyte ■ NK cell ■ Leukocyte

### External links

- Lymfocyt (česká wikipedie)
- Lymphocyte (English wikipedia)

### Sources

1. ŠVÍGLEROVÁ, Jitka. *Lymphocytes* [online]. [cit. 9.11.2010]. <<https://web.archive.org/web/20160416225157/http://wiki.lfp-studium.cz/index.php/Lymphocytes>>.



2 lymphocytes - large round non-segmented nucleus, few cytoplasms