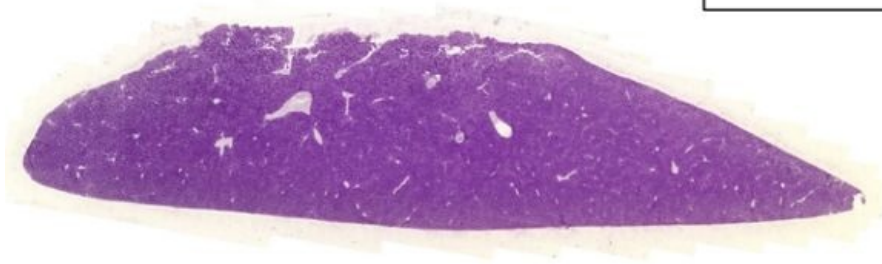


# Liver - PAS

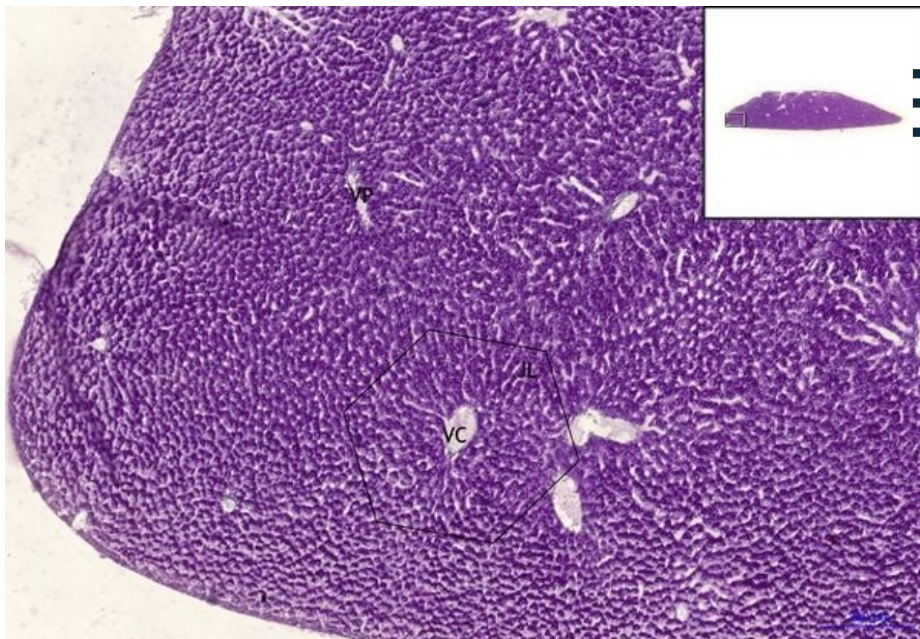
## Liver, PAS 0,5x



**Liver:**

2000 µm

## Liver, PAS 5x



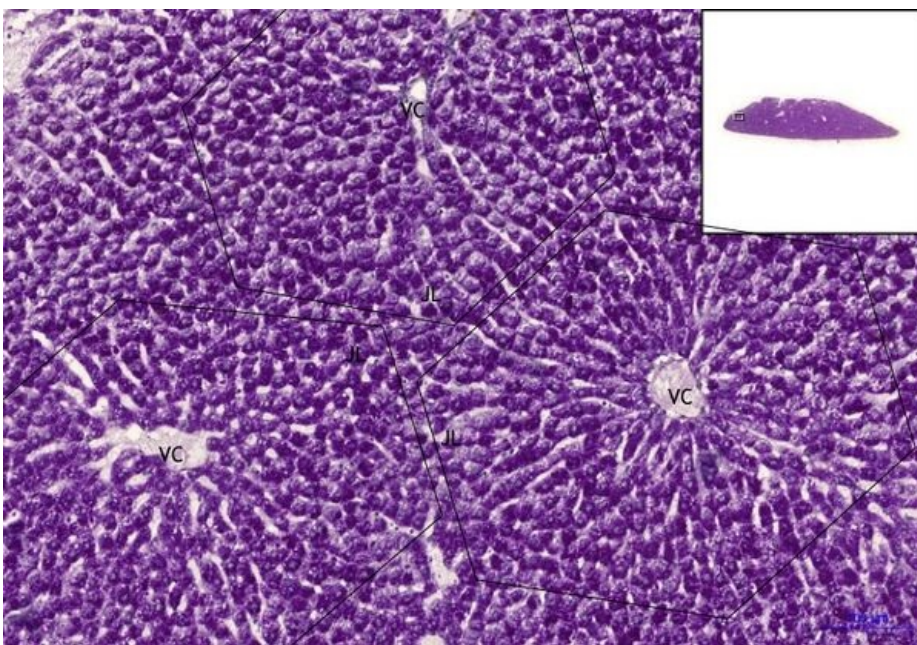
**Liver:**

- **1) JL** - hepatic lobule
- **a) VC** - vena centralis
- **b) VP** - vena portalis

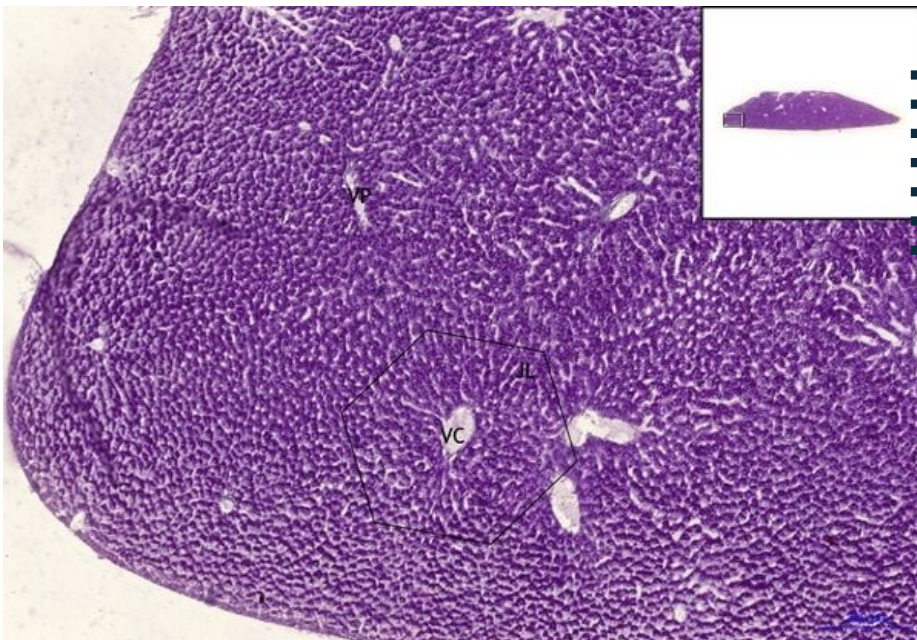
## Liver, PAS 10x

**Liver:**

- **1) JL** - hepatic lobule
- **a) VC** - vena centralis



## Liver, PAS 20x



### Liver:

- 1) JL - hepatic lobule
- a) VC - vena centralis
- b) TH - cords of hepatocytes
- c) AH - arteria hepatica
- d) KB - Kupffer cells
- e) US - sinusoid mouth
- f) G - glycogen

## Navigation

### Navigation: Digestive tract

← Slide Z18 | List of the slides | Slide Z20 →