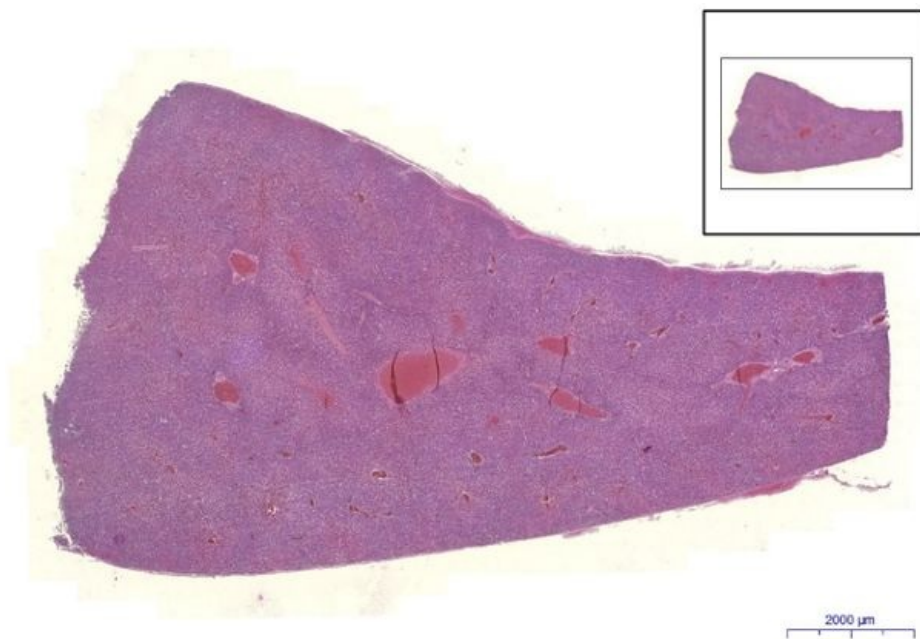


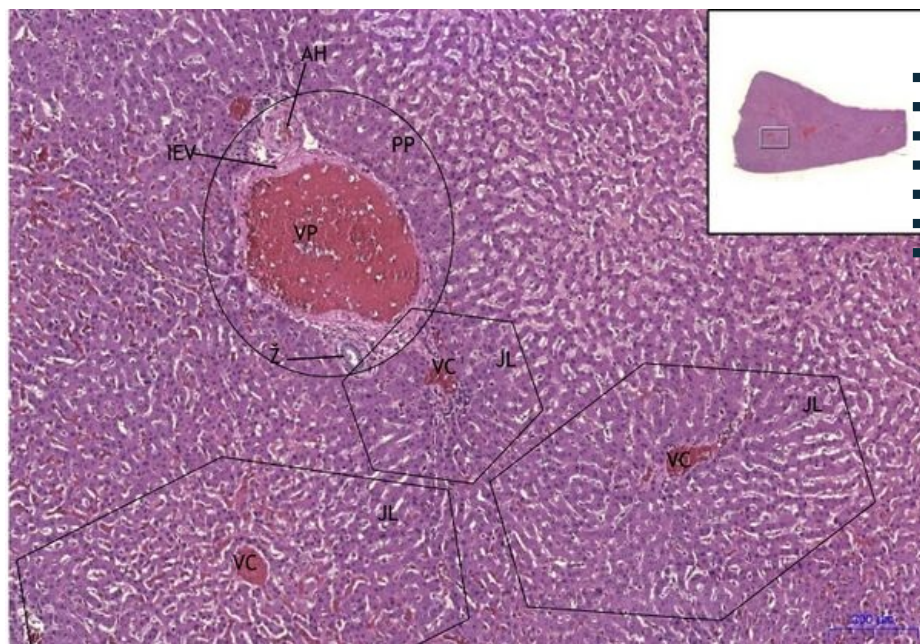
Liver - HE

Liver, HE 0,7x



Liver:

Liver, HE 5x



Liver:

- 1) JL – hepatic lobule
- a) VC – vena centralis
- b) IEV – interlobulární vazivo
- 2) PP – portobilliar space
- a) AH – arteria hepatica
- b) VP – vena portalis
- c) Ž – interlobular bile duct
(note: simple cuboidal epithelium)

Liver, HE 20x

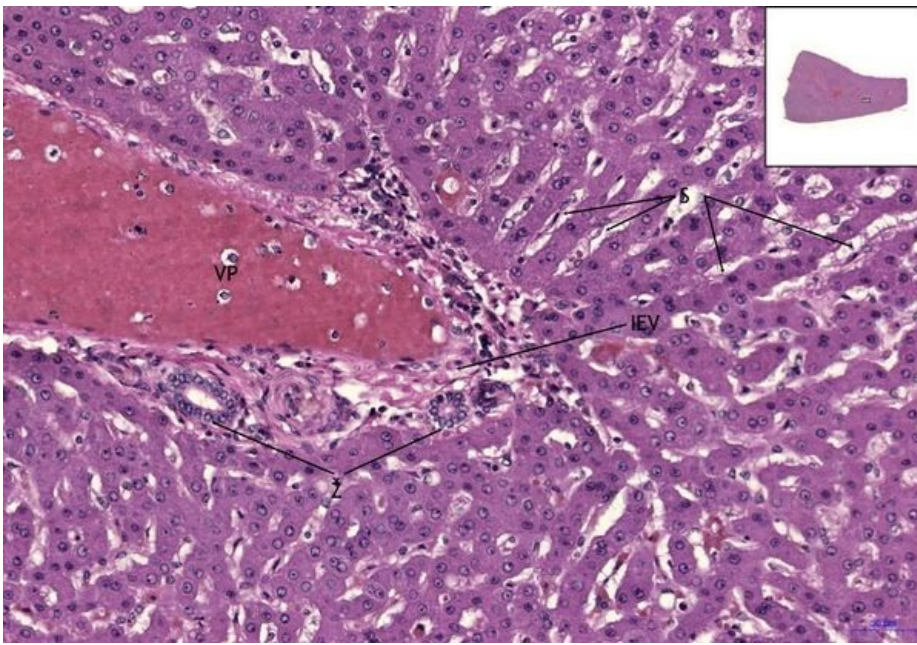
Liver:

- 1) JL – hepatic lobule
- a) S – hepatic sinusoids
- b) IEV – interlobulární vazivo
- 2) PP – portobilliar space

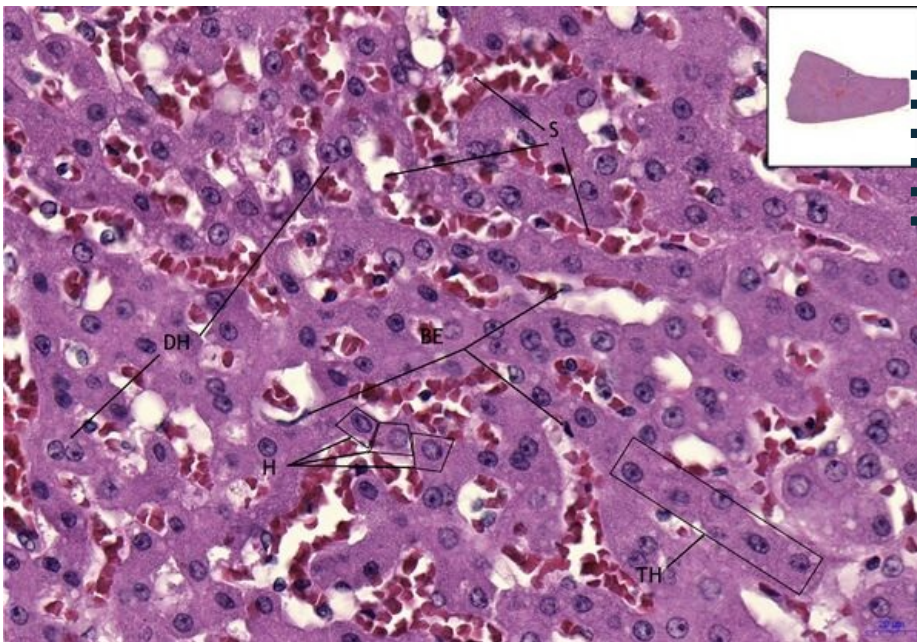
a) VP – vena portalis

b) Ž – interlobular bile duct

(note: simple cuboidal epithelium)



Liver, HE 40x



- Liver:**
- 1) JL - hepatic lobule
 - a) S - hepatic sinusoids
 - b) TH - cords of hepatocytes
 - c) BE - endothelial cells
 - d) H - hepatocytes
 - e) DH - double-nucleus hepatocyte

Navigation

Navigation: Epithelial tissue

← Slide 19 | List of the slides | Slide 1 →

Navigation: Digestive tract

← Slide Z17 | List of the slides | Slide Z19 →