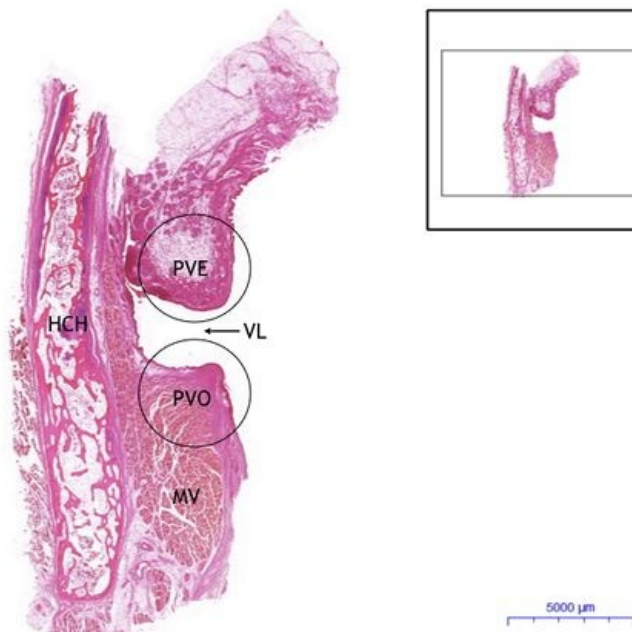


Larynx - HE

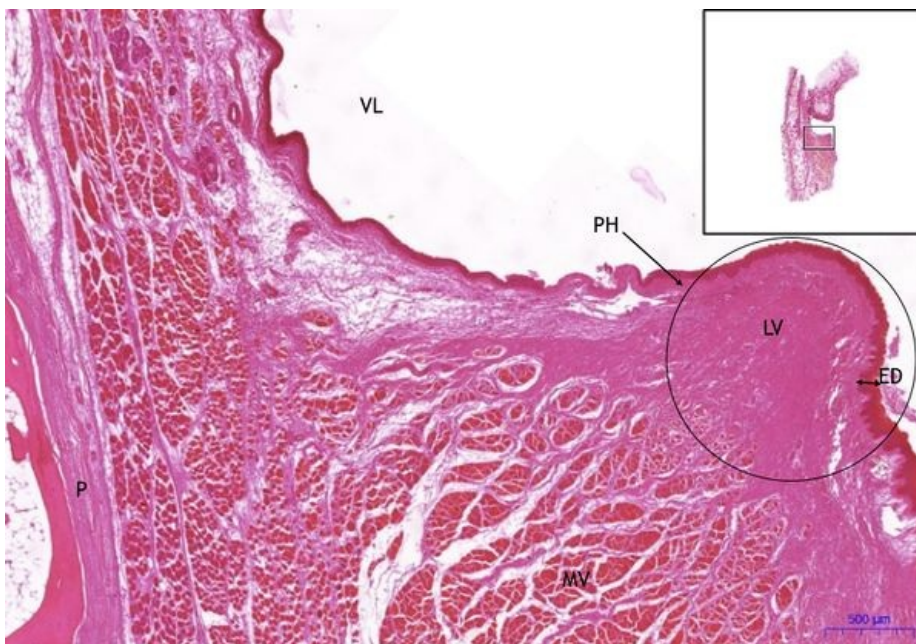
Larynx, HE 0.3x



Larynx:

- 1) **PVO** - plica vocalis - true vocal fold
- 2) **PVE** - plica vestibularis - false vocal fold
- 3) **VL** - ventriculus laryngis
- 4) **HCH** - hyaline cartilage (ossified) / hyaline cartilage (ossificated)
- 5) **MV** - musculus vocalis - skeletal muscle

Larynx, HE 2x



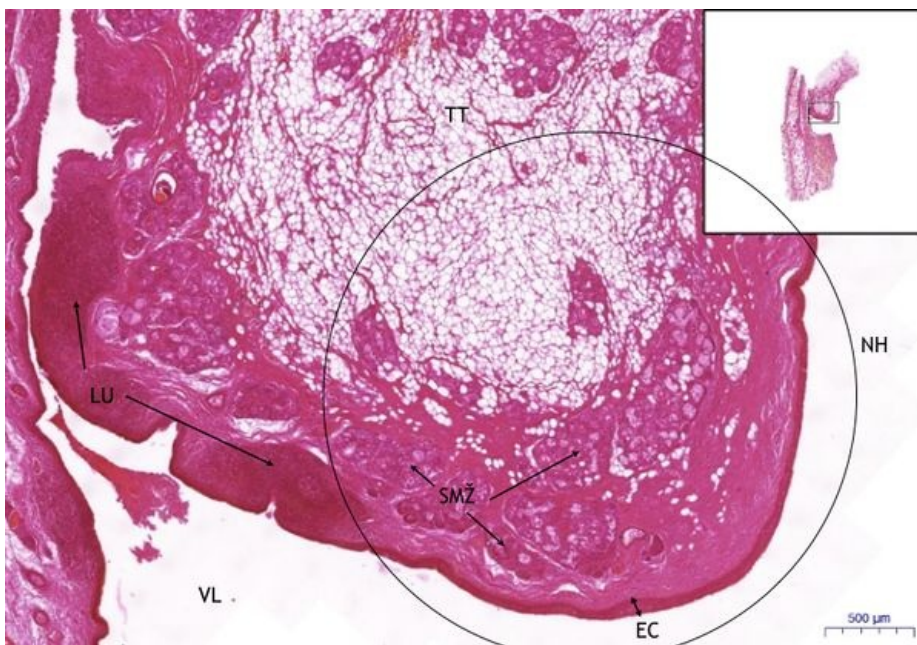
Larynx:

- 1) **PH** - plica vocalis - true vocal fold
- a) ED** - stratified squamous non-keratinizing epithelium
- b) LV** - ligamentum vocale
- 2) **VL** – ventriculus laryngis
- 3) **MV** - musculus vocalis - skeletal muscle
- 4) **P** – perichondrium

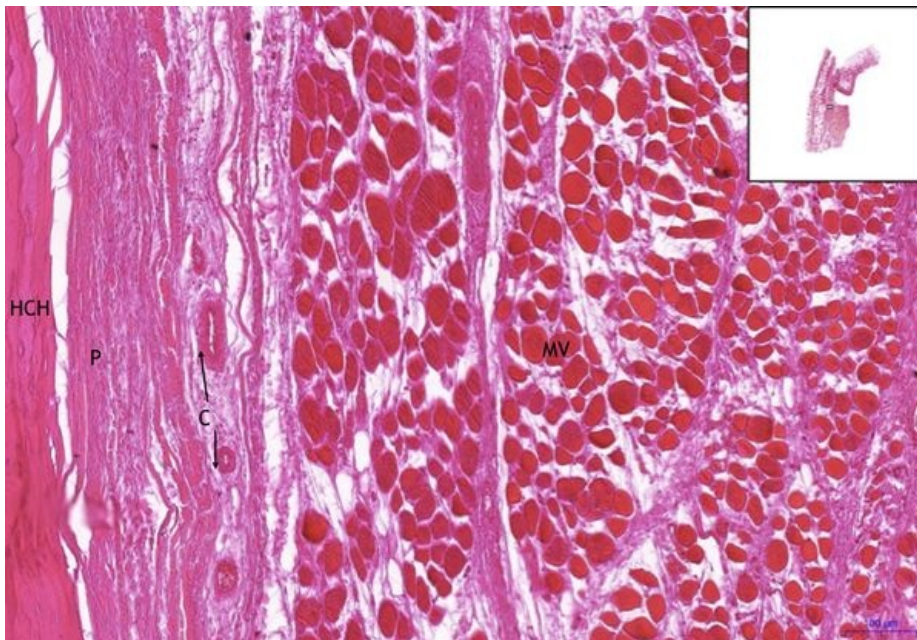
Larynx, HE 2x (2)

Larynx:

- 1) **NH** - plica vestibularis - false vocal fold
- a) EC** - pseudostratified ciliated columnar epithelium
- 2) **VL** – ventriculus laryngis
- 3) **SMŽ** - seromucous glands / seromucous gland
- 4) **TT** - fat tissue / adipose tissue
- 5) **LU** - lymph node / lymph node (laryngeal tonsils)



Larynx, HE 5x



Larynx:

- 1) **HCH** - hyaline cartilage (ossified) / hyaline cartilage (ossificated)
- 2) **P** – perichondrium
- 3) **MV** - musculus vocalis - skeletal muscle
- 4) **C** – blood vessels

Navigation

Respiratory system - Systema respiratorium

← Preparation No. D1 | Back: List of preparations | Preparation No. D3 →