

# Kupffer cells

**Kupffer cells** are macrophages, that, together with the endothelium form the lining of the liver **sinusoids**. Physiologically, they participate in the removal of old or damaged erythrocytes from the blood, this function becomes more important after **splenectomy**. They are also an important component of innate immunity. Their activation is involved in the initial liver damage in alcoholic steatosis.

## Links

### Related articles

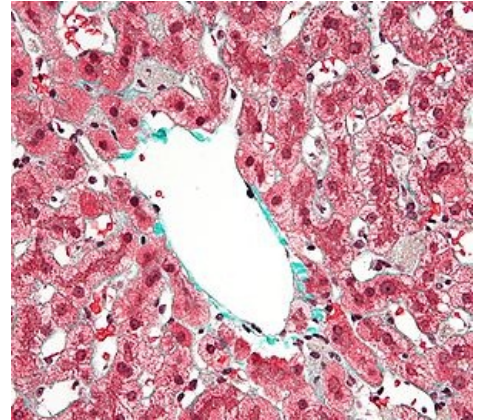
- Liver

### Liver as a histological preparation:

- Collection of histological specimens (1st Faculty of Medicine UK)/Digestive system
- Liver (SFLT)

## References

- LÜLLMANN-RAUCH, Renate. *Histology*. 1st edition. 2012. ISBN 978-80-247-3729-4.
- MESCHER, Anthony L – JUNQUEIRA, Luiz Carlos Uchôa. *Junqueira's Basic Histology*. 12th edition. 2009. 480 pp. ISBN 9780071630207.



Kupffer cells, biopsy in congestive hepatopathy, stained with trichrome