

Immunocompetent cells

Immunocompetent cells mediate the immune response. We distinguish two groups:

- *'non-specific immunity cells'* - granulocytes and macrophages;
- *'cells of specific immunity'* - T- and B-lymphocytes.

They arise from a *'pluripotent stem cell'* of the bone marrow. Upon activation, they have the ability to produce so-called cytokines, which provide intercellular signaling and thus the cooperation of immunocompetent cells. A number of different molecules with signaling and receptor properties are formed on the surface of immunocompetent cells. Some are common to several cell populations, others are typical of only one cell line. They can be used as so-called "markers" to differentiate cell populations.

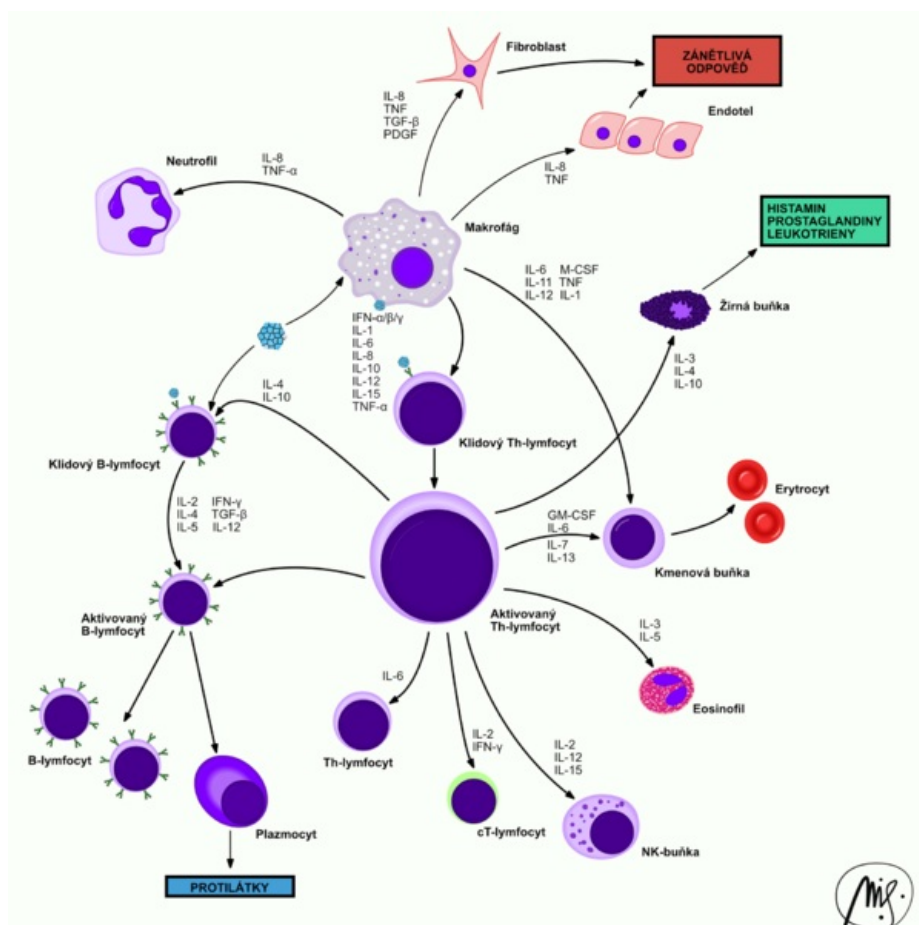
Non - specific immunity cells

These include neutrophilic granulocytes, eosinophilic granulocytes, basophilic granulocytes and macrophages (referred to in the blood as "monocytes"). Their main function is to initiate non-specific immune responses. phagocytosis and activation of specific immune responses are most involved in the destruction of antigen. They can easily migrate from the blood to the tissues based on "chemotaxis", where they participate in a defensive reaction (eg an inflammatory process).

Complement

Complement is a "non-cellular" component of immunity, but it is of great importance. It is a group of blood serum proteins that bind to the antigen-antibody complex. It enhances the destruction of cellular antigens by phagocytes (*'opsonization'*) or may itself have destructive effects (eg membrane disruption).

 For more information see Complement.



Monocytes and macrophages

Monocytes are *'large cells'*, do not contain markedly staining granules, and their nucleus is not segmented. They can be divided if necessary.

- *'A monocyte is a cell circulating in the blood, a macrophage is the same cell but in a tissue.'*

Macrophages are used in stimulation, such as "APCs" ("antigen presenting cells"), as well as in the final phase of the immune response, where they remove the consequences of attack (damaged tissues, cells, metabolites, antigen-antibody complexes).', etc.).

They contain a large number of cytoplasmic lysosomes, which play an important role both in the intracellular elimination of microbes, toxins and wastes, and in the preparation of antigen for cell-specific immunity. On the plasma membrane, they have a receptor equipment that allows them to contact the microorganism and interact with lymphocytes. The most important ones include:

- 'receptors for binding to surface carbohydrates of microorganisms';
- "Fc receptors" - which capture antibodies that have bound to the antigen (antigen-antibody complex);
- 'C1 and C3' receptors - response to complement components;
- 'cytokine receptors' - communication of immune system cells;
- 'HLA class II (MHC) antigens' - cooperation with T-lymphocytes, allow to present the antigen.

 For more information see Macrophages.

APCs

'Antigen presenting cells (APCs) are all cells that are able to process an antigen and present its' *epitopes*' (antigenic determinants) to T-lymphocytes. The molecules' *HLA II are essential for this. class*'.

APCs include macrophages, dendritic cells, and sometimes [endothelial] cells. In immunology, APCs are divided into professional APCs (macrophages, dendritic cells, B-cells) and non-professional APCs (fibroblasts, epithelial cells and endothelial cells).

Neutrophils

Neutrophilic granulocytes (neutrophils, polymorphonuclear leukocytes or microphages) are white blood cells which, together with eosinophils and basophils, are **granulocytes**.

The importance of **anti-infective defense** lies in defense against extracellular bacteria. Neutrophils are able to perform effector functions immediately, without signals from other cells.

They make up **60-70%** of peripheral blood leukocytes. They occur in the bloodstream for 6-12 hours and in the tissue for 4-5 days. Only 7% of the total number is found in the peripheral blood, 93% is found in the bone marrow (it changes under the influence of inflammatory cytokines and bacterial products). The major chemotactic agent is the chemokine IL-8.

Function

The main function of neutrophils is **phagocytosis**. Their *azurophilic* granules contain many **lytic enzymes**. When killing microbes, they can cause so-called oxidative **flare-ups** with a sufficient supply of energy. At the same time, they secrete substances that lead to the development of an inflammatory response.

Neutrophils cannot divide or supplement their granular equipment. Activated neutrophils die after performing their functions and become part of the inflammatory deposit. Dead neutrophils form **pus**.

In addition to phagocytosis, neutrophils also form extracellular networks - **NETs (Neutrophil Extracellular Traps)**. Neutrophil granulocytes die other than by necrosis and apoptosis - a process called **NETosis** (also called suicidal NETosis). The action of foreign pathogens or cholesterol and urate crystals induces changes within the neutrophil: loss of heterochromatin arrangement, disruption of nuclear segmentation, disintegration of the nuclear envelope, disintegration of mitochondria. The karyoplasm and cytoplasm mix, the cell membrane ruptures and they are released into the ECT as part of the future network. Upon spreading the mixture released from the cell, NET is formed, which is a thin fiber derived from nuclear chromatin with granular and cytoplasmic neutrophil enzymes. This complex network serves mainly to capture and immobilize microorganisms, associates with antimicrobial peptides and helps eliminate bacteria. NETs are involved in both physiological and pathological inflammation and can cause alteration if the regulation of their production is disturbed. The pathological consequences of NETosis are, for example inflammatory changes in the development of atherosclerosis, the development of lung diseases (e.g. COPD) and autoimmune disorders (especially lupus erythematosus).

Neutrophils are not among APCs!

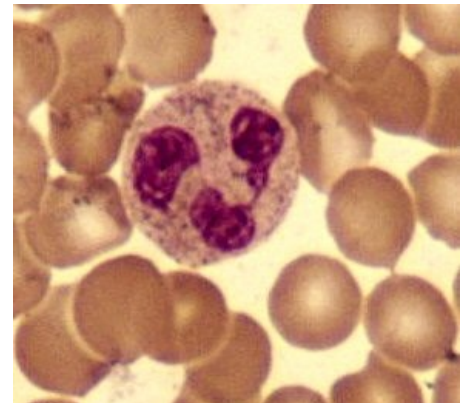
Development line

Bone marrow myeloid progenitor cell → myeloid precursor → **neutrophil**.

The progenitor cell, not just neutrophils, has an adhesive molecule CD34. It is found in small numbers in the marrow for life.



Neutrophil



Neutrophilic granulocyte in May-Grünwald-Giemsa-Romanowski staining

Their nucleus is made up of 2–5 lobes, the number of lobes increases with the age of the cell (the youngest forms of neutrophils do not have a segmented nucleus and are therefore referred to as rods). There are small, light pink granules in the cytoplasm of neutrophils. Their main role is phagocytosis.

Source

References

- HOŘEJŠÍ, Václav – BARTŮŇKOVÁ, Jiřina. *Základy imunologie*. 3. edition. Praha : Triton, 2008. 280 pp. ISBN 80-7254-686-4.
- ŠVÍGLEROVÁ, Jitka. *Neutrofilní granulocyty* [online]. The last revision 2009-02-18, [cit. 2010-11-12]. <https://web.archive.org/web/20160306065550/http://wiki.lfp-studium.cz/index.php/Neutrofilní_granulocyty>.

Neutrophils do not have the ability to divide further.

Eosinophils

Cells whose granules are markedly stained with eosin (red) and the nucleus has a "bilobular" shape ("glasses"). Their main function is to defend against *parasites*. In the case of activation, the eosinophils degranulate and the substances contained in the granules can act in two ways:

1. '*direct destruction of the parasite*' ;
2. '*Parasite envelope*' - if the destructive effects fail, the substances stimulate the surrounding fibroblasts to proliferate, thus *wrapping* the parasite in the fibrous sheath.

Eosinophils are likely to be involved in the course of '*allergic reactions*'.

Eosinophils cannot divide further.

Basophils

Basophil granules are stained with basic dyes (hematoxylin). They contain mainly histamine and heparin. They respond to the activity of eosinophils.

Basophils are also involved in "allergic reactions", in particular Type I immunopathological reaction. type.

Mast cells

Mast cells ('*mast cells*') are probably basophil cells that have traveled to the tissues. Their granules are very similar to basophils.

Cells of specific immunity

These are only '*lymphocytes*'. Recently, there has been controversy over whether B-lymphocytes should be included in non-specific immunity, as their receptors may change over the course of a cell's life.

Lymphocytes

They form a "heterogeneous group" of cells (differing in size and morphology) and make up about 20-45% of all blood leukocytes.

- They are small (8–14 µm), round cells with a large nucleus and a thin layer of cytoplasm; their morphology can change significantly with lymphocyte maturation.
- '*Morphologically*' we distinguish several types of lymphocytes according to their size (small, medium, long).
- According to the composition of the biomembrane and '*according to the function*' we distinguish two types of lymphocytes:
- # '*T-lymphocytes*' - few receptors, development in thym, initiate a specific immune response and participate in "cellular immunity";
- # '*B-lymphocytes*' - many receptors, discharge in the bone marrow, maturation in *plasma cells* (substance immunity).

T-lymphocytes

'*T-lymphocytes*' are formed in the thymus by the division of precursors that have entered the thymus from hematopoietic tissues (especially bone marrow) in the prenatal period. Here, they "learn" to recognize their own and foreign antigens using '*HLA Antigens*'. Cells that are unable to respond to strangers or react too aggressively to their own receive apoptotic signals and die. T-ly play a key role in the "resolution" of antigens, working very closely with APCs. '*They initiate and moderate specific immune responses*'. The specificity of T-ly is given by their "T-cR" (T-cellular receptors).

According to their involvement in the immune response, we distinguish:

- 'helper (auxiliary), T_H -ly' - initiation of immun. reaction,
- 'cytotoxic, T_{Cyt} -ly' - control of own cells (change of HLA antigens),
- 'suppressor T_{Sup} -ly' - mitigation and termination of the reaction,
- 'natural killers, NK' - part of non-specific immunity, cytotoxic.

 For more information see *T-lymphocytes*.

B-lymphocytes

'B-lymphocytes' form and mature in the bone marrow. For their full activation, it is necessary to encounter a specific antigen that occurs in the secondary lymphatic tissues. It is recognized by their "B-cR" (B-cellular receptor).

They work very closely 'with T-ly', they are controlled by their cytokines.

Upon encountering the antigen, a portion changes to "" plasma cells ", which move into the bone marrow and produce antibodies.

 For more information see *B-lymphocytes*.

Lymphocyte activation

- Binding of an antigen to the receptor on the plasma membrane is a signal that is transmitted in a complex way into the cell and causes changes at the DNA level.
- New molecules (activation markers), receptors for cytokines (eg *IL-2R* , receptors for *IL-3* on B cells,...) appear on the surface of the stimulated lymphocyte.
- Lymphocytes move from the *G0* to the *S* phase cell cycle and transform into lymphoblasts.
- They proliferate and mature in terminally differentiated effector cells.
- Some of them turn into "memory cells" that populate areas of lymphatic tissues and are ready to respond to repeated entry of the same antigen. * The stimulus for lymphocyte activation can be:
 - 'binding of specific antigens' - monoclonal, only one clone (T-Ly) responds to the antigen;
 - 'binding of non-specific antigens' - polyclonal, no specific receptors (B-Ly) required for binding.

Course of the immune response

- The antigen enters the body.
- It is immediately attacked by antibodies that activate complement.
- The opsonized antigen is phagocytosed by APCs.
- the processed antigen is together with HLA II. class exposed to the cell surface.
- T-Ly H reacts with HLA II. class and begins to produce interleukins.
- Interleukins activate other T-Ly and B-Ly groups.
- B-Ly, which have receptors for a given antigen, begin to divide and mature in plasma cells.
- Plasma cells produce antibodies and, together with T-Ly, destroy the antigen.
- After completion of the reaction, some mature T- and B-lymphocytes are transformed into so-called "memory cells", which are waiting for the next encounter with the antigen, which initiates the immune response.
- Specific immunity is very important, without it the immune response is ineffective, which manifests itself in its failure (AIDS).

Links

Related Articles

- Phagocytosis
- Macrophages
- Non-specific immunity
- Specific immunity
- Genetics of Ig, B and T receptors
- HLA system

Quote

Source

- ŠTEFÁNEK, Jiří. Medicine, diseases, study at the 1st Faculty of Medicine, Charles University [online]. [feeling. 11. 2. 2010]

Used literature

- HOŘEJŠÍ, Václav and Jiřina BARTŮŇKOVÁ. Basics of immunology. 3rd edition. Prague: Triton, 2008. 280 pp.

- WIKIPEDIE. B-lymphocyte [online]. © 2008. Last revision 2009, [cit. 2010-01-12]