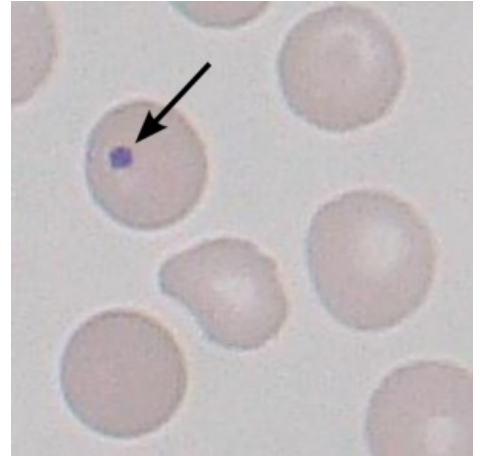


Howell-Jolly bodies



Howell-Jolly bodies are basophylic bodies within erythrocytes representing DNA material. Normally they occur only rarely, their presence is a sign of splenic damage. They occur in the following conditions:

- post-splenectomy,
- splenic trauma,
- splenic damage in patients with sickle cell anemia,
- splenic atrophy - sometimes present in patients with coeliac disease,
- splenic damage after radiotherapy,
- hemolytic anemia,
- megaloblastic anemia,
- myelodysplastic syndrome,
- hereditary spherocytosis



An arrow pointing on the Howell-Jolly body.