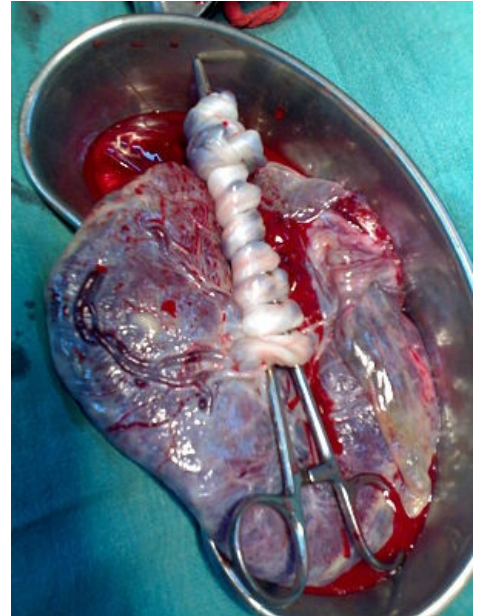


Histology MCQs/Placenta and fetal membranes

- 1 Which of following statementst about **dizygotic twins** is true?
- ☐ Birth weight of this twin is about one half of normal birth weight
 - ☐ Each twin has its own amniotic cavity
 - ☐ They originate from one oocyte
 - ☐ They have the same sex
- 2 Which pathological condition is called **placenta increta**?
- ☐ Placenta is inserted too low, it covers the cervical channel
 - ☐ Placenta is full of blood clots (trombi), its function drops
 - ☐ Placenta is splitted to two or more separated lobes
 - ☐ Placental villi growth into the myometrium
- 3 All but one hormones are produced by the placenta? Which one **does not**?
- ☐ Chorionic gonadotropin
 - ☐ Triiodthyronine
 - ☐ Progesteron
 - ☐ Estrogens
- 4 Which statement about the blood flowing in the **umbilical vein** is true?
- ☐ The blood is maternal oxygenated
 - ☐ The blood is fetal oxygenated
 - ☐ The blood is maternal with low level of oxygen
 - ☐ The blood is fetal with low level of oxygen
- 5 Where takes place the **amniotic fluid**?
- ☐ In the abdominal cavity of the fetus
 - ☐ In the intervillous space
 - ☐ In the amniotic cavity
 - ☐ In the chorion
- 6 Which statement about the **syncytiotrophoblast** is true?
- ☐ It covers the chorionic villi
 - ☐ It covers the chorionic plate
 - ☐ It covers both chorioic villi and plate
 - ☐ It disappears before formation of the placenta is completed
- 7 Which blood takes place inside the **intervillous spaces**?
- ☐ Mixed maternal and fetal blood
 - ☐ Maternal blood
 - ☐ Fetal blood
 - ☐ There is no blood here
- 8 Which statement about the **decidua basalis** is true?
- ☐ It does not contain markable deposits of glycogen
 - ☐ It gives rise maternal part of the placenta
 - ☐ It covers whole uterine cavity
 - ☐ It contains no vessel
- 9 Which compound can not pass the **placental barrier**?
- ☐ Hemoglobin
 - ☐ Aminoacids



Placenta and umbilical cord.

- ☐ Glucose
- ☐ Water

10 Which structure holds maternal and fetal parts of the placenta together?

- ☐ Pressure of surrounding anatomical structures
- ☐ Ligaments on the border of the placenta
- ☐ Ligament in the center of the placenta
- ☐ Anchoring villi

11 Which structures form the **placental barrier**?

- ☐ Fetal capillaries, syncytiotrophoblast, maternal capillaries
- ☐ Fetal capillaries, cytotrophoblast, syncytiotrophoblast
- ☐ Chorionic membrane and maternal capillaries
- ☐ Chorionic membrane and fetal capillaries

12 Which pathological condition can be caused by Rh incompatibility?

- ☐ Twin-to-twin transfusion
- ☐ Fetal erythroblastosis
- ☐ Placenta percreta
- ☐ Umbilical knots

13 Do IgG antibodies pass the placental barrier?

- ☐ Yes, they do
- ☐ Yes, they do, but at the beginning of the pregnancy only
- ☐ Yes, they do, but few days before the birth only
- ☐ No, they do not

14 Which statement about **monochorionic twins** is true?

- ☐ In almost all cases, the twins are monozygotic
- ☐ In all cases, twins share the amniotic cavity
- ☐ In majority of cases, each twin has its own placenta
- ☐ In all cases, shared placenta is excluded

15 How big is usually the **placenta** before the birth?

- ☐ About 12 cm in diameter and 2-2.5 cm in thickness
- ☐ About 12 cm in diameter and 5-5.5 cm in thickness
- ☐ About 22 cm in diameter and 2-2.5 cm in thickness
- ☐ About 22 cm in diameter and 5-5.5 cm in thickness

16 How long is usually the **umbilical cord** before the birth?

- ☐ About 20 cm
- ☐ About 30 cm
- ☐ About 40 cm
- ☐ About 50 cm

17 How is called the stage of the labor in which the placenta is expelled?

- ☐ Second stage
- ☐ Third stage
- ☐ Fourth stage
- ☐ It has no name

18 In which direction are transported **urea** and **uric acid** through the placenta? *note: both these compounds are common waste products of the metabolism*

- ☐ From the fetal blood to the maternal blood
- ☐ From the maternal blood to the fetal blood
- ☐ They can not pass the placental barrier

19 In which direction are transported **phenylalanine** or **leucine** through the placenta?

- ☐ From the fetal blood to the maternal blood

- ☐ Form the maternal blood to the fetal blood
- ☐ They can not pass the placental barrier

20 Can viruses pass the placental barrier?

- ☐ Yes, all viruses can easily pass the barrier
- ☐ Yes, some viruses can pass the barrier
- ☐ No, viruses can not pass the barrier

Submit

Links

- List of all tests: Histology MCQs
- Portal:Histology