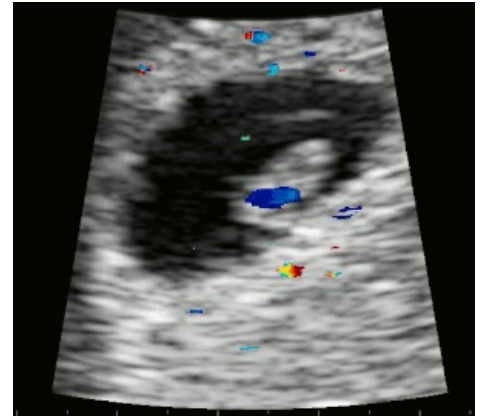


Histology MCQs/Development of Cardiovascular System

- 1 In which vessel of the fetal circulation takes place **pure arterial blood**?
 - ☐ Umbilical vein before connection with portal circulation
 - ☐ Truncus pulmonalis
 - ☐ Descendent aorta
 - ☐ Pulmonal veins
- 2 Majority of blood ejected to the truncus pulmonalis in fetal circulation continues into:
 - ☐ Pulmonary circulation
 - ☐ Ductus arteriosus
 - ☐ Ascendent aorta
 - ☐ Left atrium
- 3 **Mesoblastic period** of hematopoiesis is period of production of blood inside:
 - ☐ Intraembryonic mesoderm
 - ☐ Mesoderm of yolk sack
 - ☐ Liver and spleen
 - ☐ Bone marrow
- 4 What is an **angiogenesis**?
 - ☐ Formation of new vessels independent on other vessels
 - ☐ Sprouting of new vessels from older vessels
 - ☐ Maturation of the vascular wall
 - ☐ Maturation of the arterial wall
- 5 What is a **vaskulogenesis**?
 - ☐ Formation of new vessels independent on other vessels
 - ☐ Sprouting of new vessels from older vessels
 - ☐ Maturation of the vascular wall
 - ☐ Maturation of the venous wall
- 6 When are formed blood islands?
 - ☐ In the 2nd week
 - ☐ In the 3rd week
 - ☐ In the 5th week
 - ☐ In the 4th week
- 7 When the embryonic heart starts to beat?
 - ☐ Around 16th day
 - ☐ Around 21th day
 - ☐ Around 28th day
 - ☐ Around 35th day
- 8 Where starts development of the heart? (*Where is the cardiogenic area*)?
 - ☐ In cranial part of trilaminar germ disk
 - ☐ In middle part of trilaminar germ disk
 - ☐ In caudal part of trilaminar germ disk
 - ☐ In anterior wall of the yolk sack
- 9 Which statement about the **fetal circulation** is true?



Heart beats early. Its action can be recognised using Doppler ultrasound imaging.

- ☐ Blood which is rich on oxygen and nutrients flows though the umbilical vein
- ☐ In the cranial part of inferior caval vein flows mixed blood
- ☐ Ductus arteriosus connects aorta with truncus pulmonalis
- ☐ Ductus venosus is later stage of venous sinus

Submit

Links

- List of all tests: Histology MCQs
- Portal:Histology