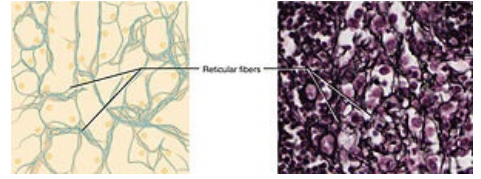


# Histology/Pictures in Final MCQ

In the final MCQ, there are few pictures as well. This page contains information about them recorded by students.

## Pictures Related to General Histology

- EM picture, an arrow pointing at euchromatine
- Sarcomere picture - an arrow pointing at "anisotropic band"
- A picture of a leukocyte - which one is it



## Pictures Related to Special Histology

- A picture of one of the types type of stomach glands and where are they located (if it's cardia or fundus or pylorus or lieberkuhn crypt)
- A picture of thymus - medulla light, cortex dark

## Pictures Related to Embryology

- A picture of a follicle- an arrow pointing at the nucleus
- A picture of amnion
- Number of questions about primitive streak!
- Blastocyste 8, 11-12, 20 day

## Links

### Related Articles

- Portal:Histology
- Histology/Final Exam Tips

### Bibliography

- MESCHER, Anthony L.. *Junqueira's Basic Histology Text and Atlas*. 15th edition. McGraw-Hill, 2018. 1136 pp. pp. 1-1136. ISBN 9781260288414.
- SADLER, T.W.. *Langman's Medical Embryology*. 14th edition. LIPPINCOTT WILLIAMS & WILKINS, 2018. 456 pp. pp. 1-456. ISBN 1496383907.