

Golgi apparatus

Functionally, the **Golgi apparatus**' binds to the endoplasmic reticulum.

Construction

The Golgi apparatus consists of lamellae and cisternae oriented convexly towards the nucleus. What forms the endoplasmic reticulum reaches the Golgi apparatus, where it is incorporated into secretory vesicles, lysosomes and other organelles. After remodeling, it leaves the Golgi apparatus on the other side of the surface.

Function

- Under direct control of the nucleus - communication by transport vesicles arising from the perinuclear cisterns.
- Synthesis of polysaccharides.
- Synthesis of glycoproteins.
- Concentration of endoplasmic reticulum products and formation of secretory granules. These secretory granules are sent to the cytoplasm.

Links

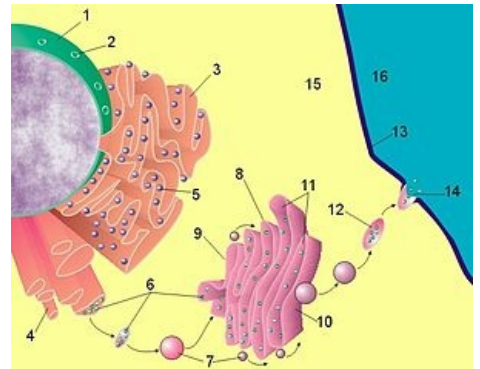
References

▪

” {{{1}}} “

▪

” {{{1}}} “



Relationship between nucleus, endoplasmic reticulum, Golgi apparatus and cell membrane