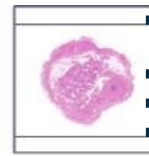
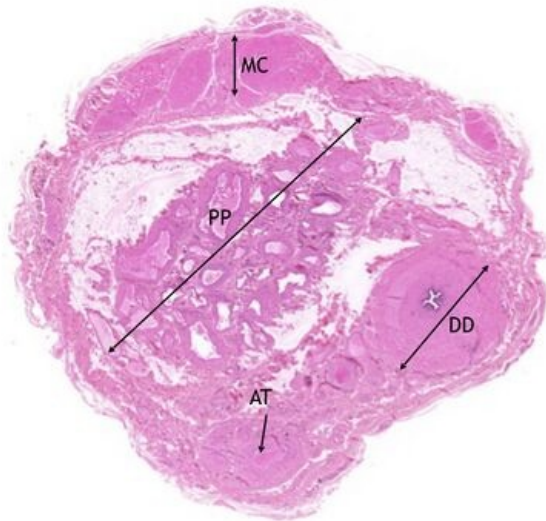


# Funiculus spermaticus - HE

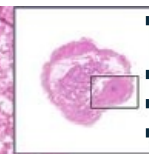
## Funiculus spermaticus - HE, 0,6x



### Funiculus spermaticus:

- 1) MC - musculus cremaster
- 2) PP - plexus pampiniformis
- 3) AT - testicular artery
- 4) DD - ductus deferens

## Funiculus spermaticus - HE, 2x



### Funiculus spermaticus:

- 1) TA - musculus cremaster
- 2) DD - tunica albuginea
- a) LP - lamina propria

### Muscle layers:

- c) VV - inner layer - longitudinal
- d) ST - middle layer - circular
- e) ZV - outer (longitudinal) layer

## Funiculus spermaticus - HE, 10x

### Funiculus spermaticus:

- 4) DD - ductus deferens
- a) EC - columnar epithelium, two layered
- b) LP - lamina propria
- c) L - lumen

### Muscle layers:

- c) VV - inner layer -longitudinal



# Navigation

**Navigation: Digestive tract**  
← Slide M2 | List of the slides | Slide M3a →