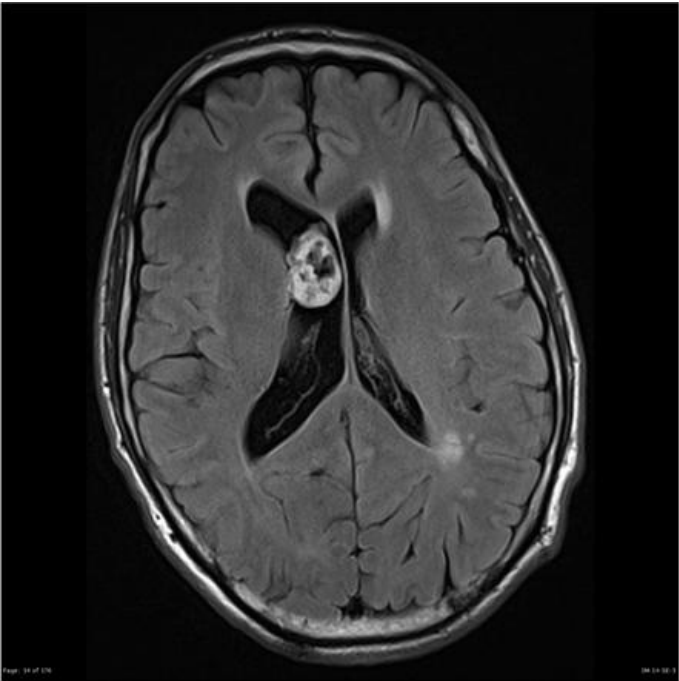


File:Subependymom v laterální komoře.jpg



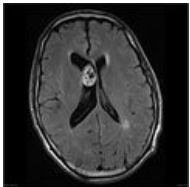
No higher resolution available.

Subependymom_v_laterální_komoře.jpg (442 × 442 pixels, file size: 24 KB, MIME type: image/jpeg)

MRI - WHO grade I ependymoma

File history

Click on a date/time to view the file as it appeared at that time.

	Date/Time	Thumbnail	Dimensions	User	Comment
current	16:39, 15 February 2022		442 × 442 (24 KB)	StruharovaMarta (talk contribs)	

You cannot overwrite this file.

File usage

The following 4 pages use this file:

- Brain gliomas
- Ependymoma
- Gliomas of the brain
- Tumors of cerebellum and IV. ventricle in adults