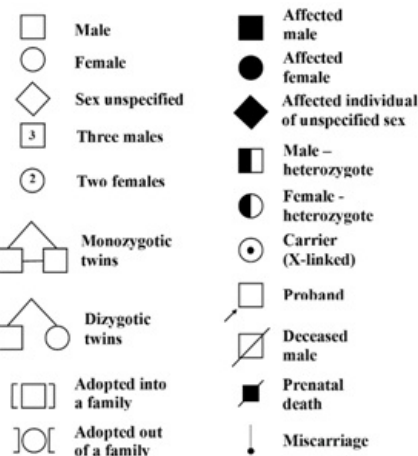


# File:Pedigree-marks.png



No higher resolution available.

Pedigree-marks.png (282 × 299 pixels, file size: 40 KB, MIME type: image/png)

 **Open in Media Viewer**



## Description

Pedigree marks

## Author

Aleš Panczak, MD


## Source

Archive of Aleš Panczak, MD

## Date


2017-07-24

## Licensing

 Creative Commons Attribution-ShareAlike 3.0 Unported (<http://creativecommons.org/licenses/by-sa/3.0/deed.en>)

## File history

Click on a date/time to view the file as it appeared at that time.

|         | Date/Time                  | Thumbnail                                                                           | Dimensions        | User                     | Comment                                                                                                                                                                                   |
|---------|----------------------------|-------------------------------------------------------------------------------------|-------------------|--------------------------|-------------------------------------------------------------------------------------------------------------------------------------------------------------------------------------------|
| current | <b>12:41, 24 July 2017</b> |  | 282 × 299 (40 KB) | Azrael (talk   contribs) | {{File  description = Pedigree marks  source = Archive of Aleš Panczak, MD  date = 2017-07-24  author = Aleš Panczak, MD  license = {{cc by-sa 3.0}} }} Category:Genetics Category:Images |

You cannot overwrite this file.

## File usage

The following page uses this file:

- Genealogical method