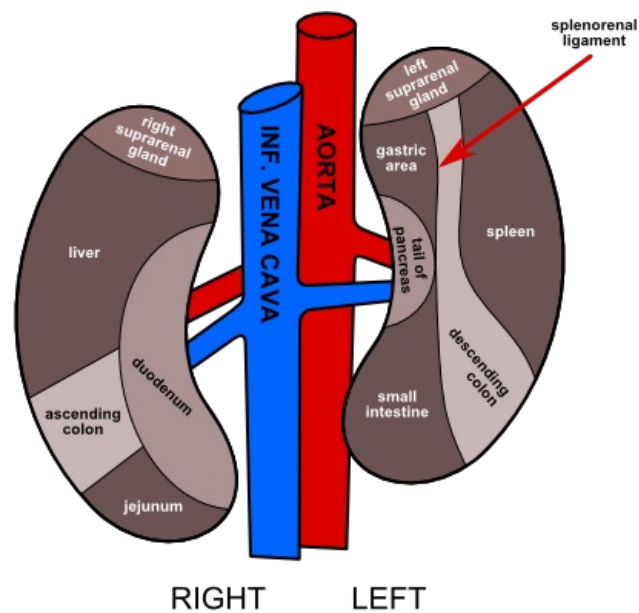


File:Kidney syntopy.png

Syntopy of Kidney
Anterior Aspect



No higher resolution available.

Kidney_syntopy.png (480 × 480 pixels, file size: 62 KB, MIME type: image/png)

Description

Syntopy of kidney - anterior aspect

Author



Filip Mares (WikiSkripta editorial board (<http://www.wikiskripta.eu/index.php/WikiSkripta:Organizace>))

Source

Own work

Date

2011-12-21

Licensing

Creative Commons Attribution 3.0 Czech Republic (<http://creativecommons.org/licenses/by/3.0/cz/deed.en>)

File history

Click on a date/time to view the file as it appeared at that time.

	Date/Time	Thumbnail	Dimensions	User	Comment
current	13:26, 21 December 2011	A small thumbnail version of the anatomical diagram showing the anterior aspect of the kidneys and their relationship to abdominal organs.	480 × 480 (62 KB)	Icewalker (talk contribs)	{ { File description = Syntopy of kidney - anterior aspect source = {{own work}} date = 2011-12-21 author = ~~~ license = {{cc by 3.0 cz}} } }

You cannot overwrite this file.

File usage

The following 2 pages use this file:

- Kidney
- Syntopy of Kidney

