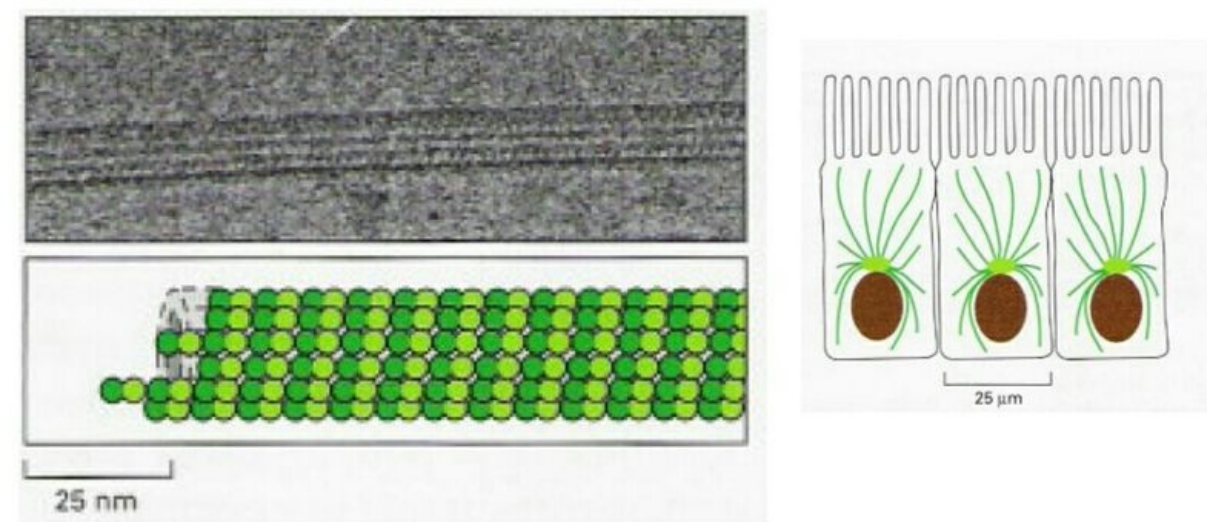


File:IMG 20151125 165024.jpg



Size of this preview: 800 × 348 pixels.
Original file (1,124 × 489 pixels, file size: 338 KB, MIME type: image/jpeg)

Description
microtubule filament
Author
Alberts B.
Source
Essential Cell Biology
Date
2010

Licensing

GNU General Public License (<http://www.fsf.org/licensing/licenses/gpl.html>)

File history

Click on a date/time to view the file as it appeared at that time.

| | Date/Time | Thumbnail | Dimensions | User | Comment |
|---------|------------------------|-----------|----------------------|---------------------------------|---|
| current | 11:30, 7 December 2015 | | 1,124 × 489 (338 KB) | Abigailwalker (talk contribs) | { {File description = microtubule filament source = Essential Cell Biology date = 2010 author = Alberts B. license = {{gpl}} } } Category:biology Category:cytoskeleton types Category:microtubule Category:Images |

You cannot overwrite this file.

File usage

The following page uses this file:

- Types of cytoskeletal filaments

Metadata

This file contains additional information, probably added from the digital camera or scanner used to create or digitize it.
If the file has been modified from its original state, some details may not fully reflect the modified file.

