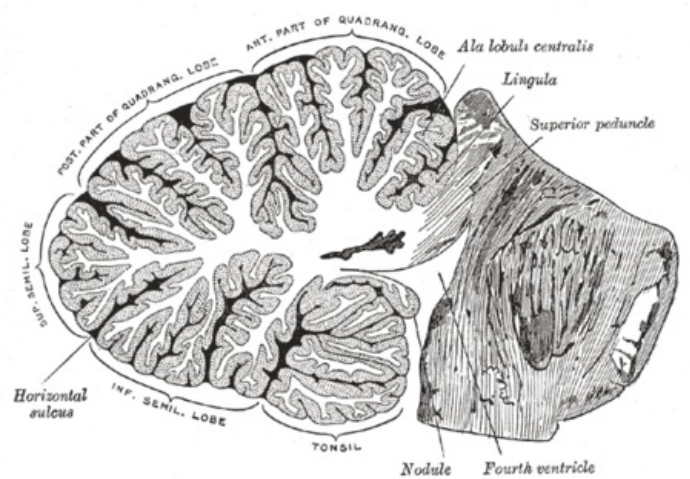


File:Gray704.png



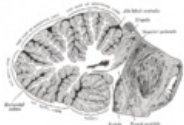
No higher resolution available.

Gray704.png (450 × 312 pixels, file size: 230 KB, MIME type: image/png)

Cerebellum - sagittal section

File history

Click on a date/time to view the file as it appeared at that time.

	Date/Time	Thumbnail	Dimensions	User	Comment
current	18:48, 13 May 2022		450 × 312 (230 KB)	Iwesata (talk contribs)	

You cannot overwrite this file.

File usage

The following 6 pages use this file:

- Brain
- Central nervous system
- Cerebellum
- Hindbrain
- The Cerebellum
- The cerebellopontine angle syndrome

Metadata

This file contains additional information, probably added from the digital camera or scanner used to create or digitize it.

If the file has been modified from its original state, some details may not fully reflect the modified file.