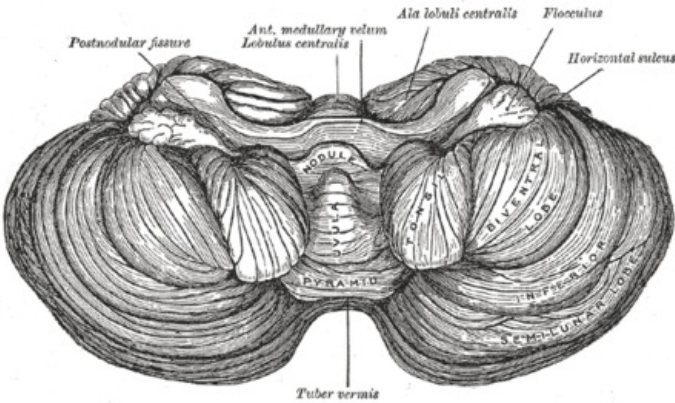


File:Gray703.png



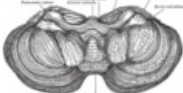
No higher resolution available.

Gray703.png (450 × 263 pixels, file size: 222 KB, MIME type: image/png)

The base of the cerebellum

File history

Click on a date/time to view the file as it appeared at that time.

	Date/Time	Thumbnail	Dimensions	User	Comment
current	18:50, 13 May 2022		450 × 263 (222 KB)	Iwesata (talk contribs)	

You cannot overwrite this file.

File usage

The following 5 pages use this file:

- Brain
- Central nervous system
- Cerebellum
- Hindbrain
- The Cerebellum

Metadata

This file contains additional information, probably added from the digital camera or scanner used to create or digitize it.

If the file has been modified from its original state, some details may not fully reflect the modified file.