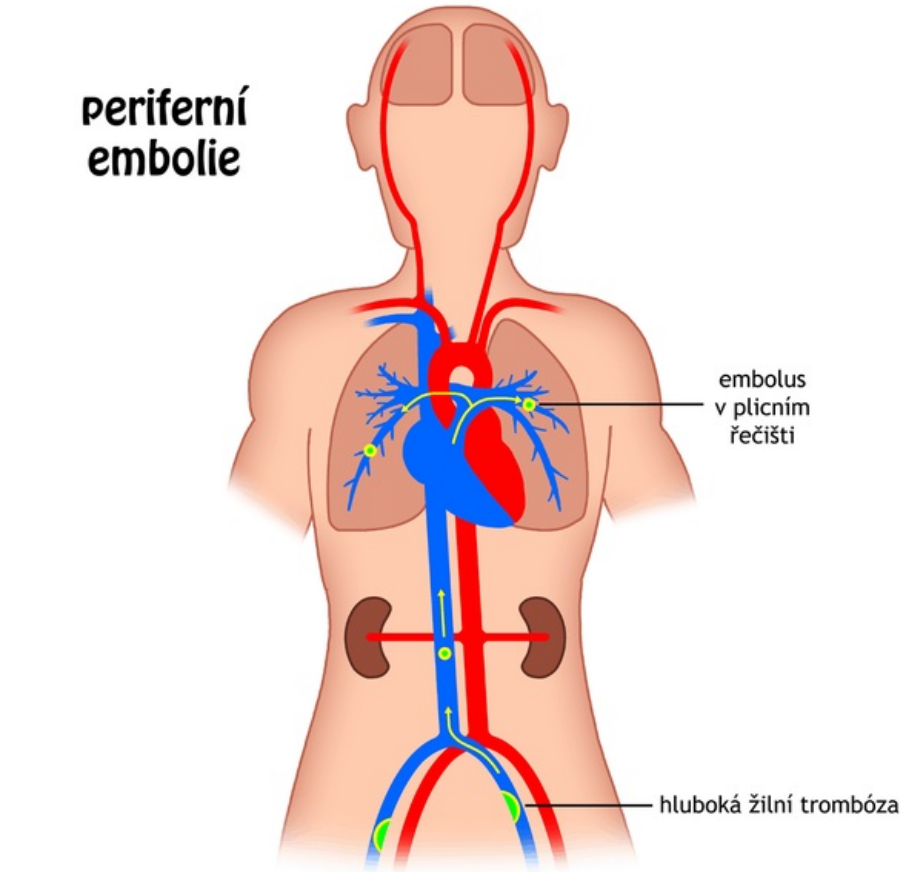


File:Embolie periferní.png



Size of this preview: 600 × 600 pixels.

Original file (1,024 × 1,024 pixels, file size: 77 KB, MIME type: image/png)

 [Open in Media Viewer](#)



Summary

Description
Scheme of the formation of a peripheral embolism (from the peripheral blood stream to the lungs)

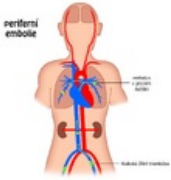
Author
Icewalker

Source
own work

Date
2011-03-15

File history

Click on a date/time to view the file as it appeared at that time.

	Date/Time	Thumbnail	Dimensions	User	Comment
current	00:47, 1 April 2023		1,024 × 1,024 (77 KB)	JowelJ (talk contribs)	{{File description = Scheme of the formation of a peripheral embolism (from the peripheral blood stream to the lungs) author = Icewalker source = own work date = 2011-03-15 }}

You cannot overwrite this file.

File usage

The following page uses this file:

- Embolism

Metadata

This file contains additional information, probably added from the digital camera or scanner used to create or digitize it.

If the file has been modified from its original state, some details may not fully reflect the modified file.