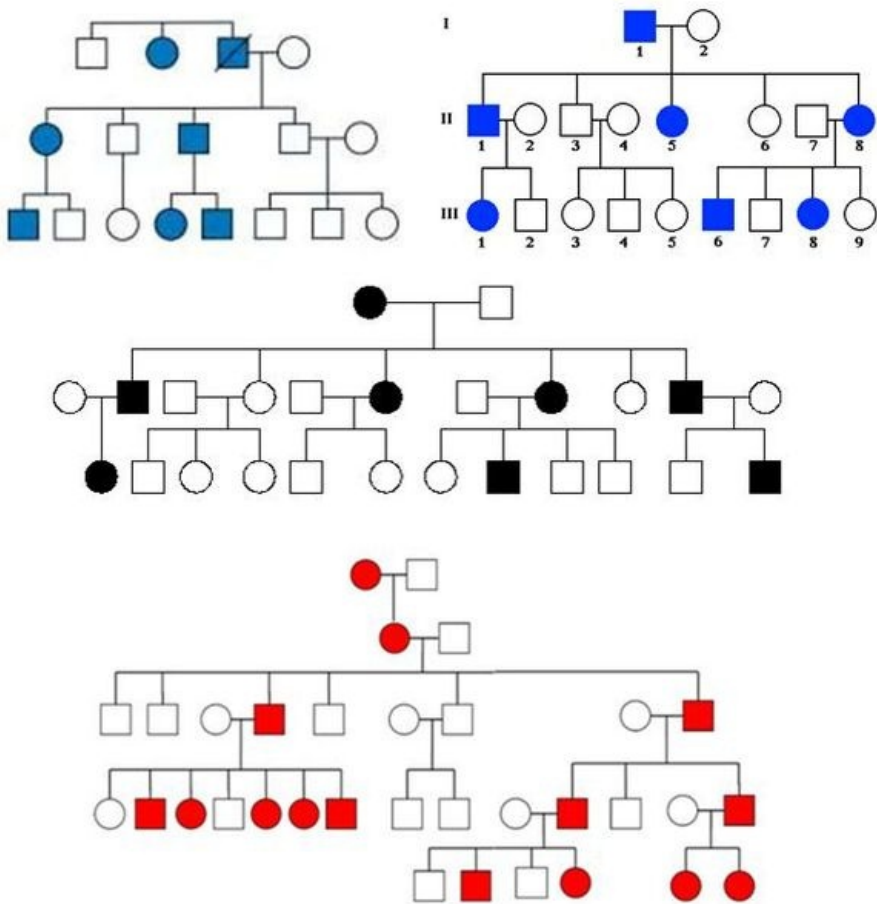


File:AD-Pedigrees.jpg



Size of this preview: 580 × 600 pixels.

Original file (614 × 635 pixels, file size: 42 KB, MIME type: image/jpeg)

Open in Media Viewer

Description
Autosomal dominant inheritance - Examples of pedigrees

Author
Aleš Panczak, MD

Source
Archive of Aleš Panczak, MD

Date
2017-07-24

Licensing

Creative Commons Attribution-ShareAlike 3.0 Unported (<http://creativecommons.org/licenses/by-sa/3.0/deed.en>)

File history

Click on a date/time to view the file as it appeared at that time.

	Date/Time	Thumbnail	Dimensions	User	Comment
current	13:01, 24 July 2017		614 × 635 (42 KB)	Azrael (talk contribs)	{{File description = Autosomal dominant inheritance - Examples of pedigrees source = Archive of Aleš Panczak, MD date = 2017-07-24 author = Aleš Panczak, MD license = {{cc by-sa 3.0}}}} Category:Genetics Category:Images

You cannot overwrite this file.

File usage

The following page uses this file:

- Autosomal dominant inheritance in pedigree and experiment, examples of traits in man