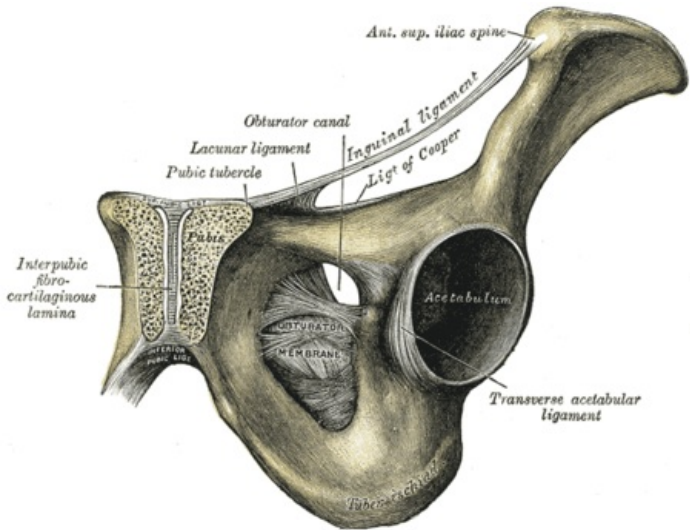


File:450px-Gray321.png



No higher resolution available.

450px-Gray321.png (450 × 344 pixels, file size: 178 KB, MIME type: image/png)

Canalis obturatorius and pelvic structures

Description

Symphysis pubis exposed by a coronal section.

Author

https://en.wikipedia.org/wiki/en:Henry_Vandyke_Carter

Source

Henry Gray (1918) Anatomy of the Human Body (See "Book" section below)

Bartleby.com: Gray's Anatomy, Plate 321

Date

before 1858

File history

Click on a date/time to view the file as it appeared at that time.

	Date/Time	Thumbnail	Dimensions	User	Comment
current	14:26, 29 May 2023		450 × 344 (178 KB)	Kavoosi.arefeh (talk contribs)	{{File description = Canalis obturatorius and pelvic structures Media boundaries obturatory membrane Lateral boundaries obturatory membrane Content N. obturatorius, A. and V. obturatoria author = Author's name and surname source = Source web address or "own work" date = Date }}

You cannot overwrite this file.

File usage

The following page uses this file:

- Canalis obturatorius

Metadata

This file contains additional information, probably added from the digital camera or scanner used to create or digitize it.

If the file has been modified from its original state, some details may not fully reflect the modified file.

