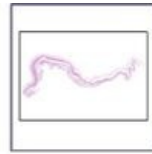


Fetal membranes - HE

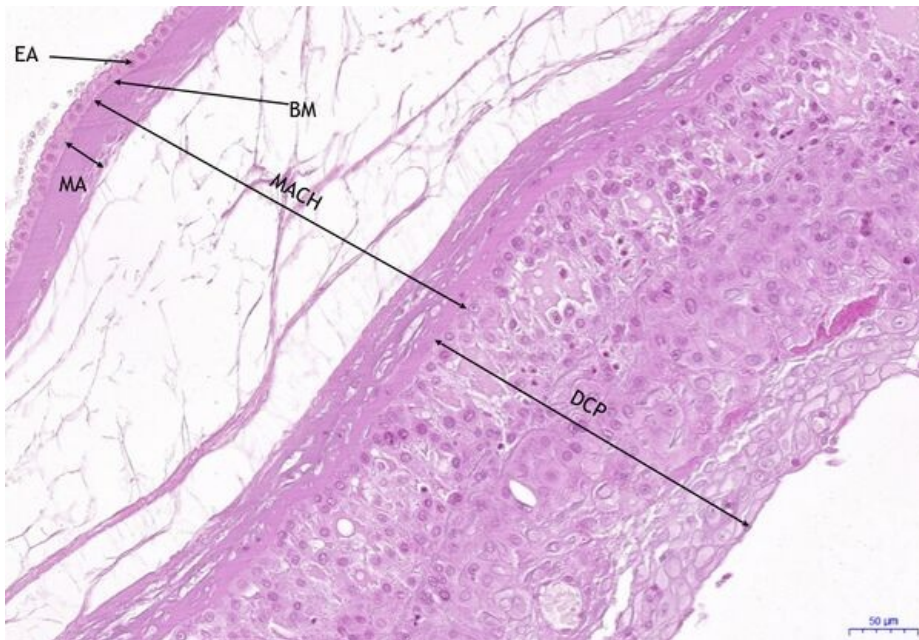
Fetal membranes, HE 0,7x



Fetal membranes:

1000 μ m

Fetal membranes, HE 10,8x



Fetal membranes:

- 1) **EA** - amnion epithelium
- 2) **BM** - basal membrane
- 3) **MA** - amniotic mesoderm
- 4) **MACH** - amniotic and chorionic mesoderm
- 5) **DCP** - decidua capsularis and parietalis

Navigation

