

Epiphysis (part of bone)



The epiphysis is the terminal part of a long Bone, on which the Metaphysis rests , with or without its metaphyseal Cartilage (while the bone is growing) (after bone growth stops). It can be on both ends of long bones or only on one end of the bone.

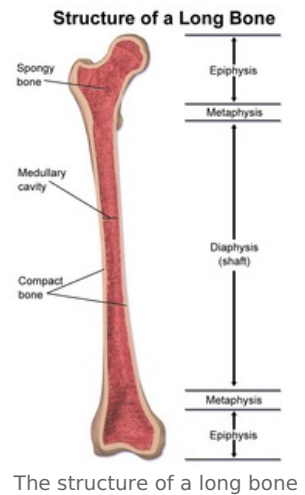
Links

related articles

- Metaphysis
- Diaphysis

References

- SOSNA, A. – VAVŘÍK, P. – KRBEC, M., et al. *Základy ortopedie*. 1. edition. Praha : Triton, 2001. ISBN 80-7254-202-8.
- ČIHÁK, Radomír. *Anatomie*. - edition. Grada Publishing, a.s., 2011. 287 pp. ISBN 9788024738178.



The structure of a long bone