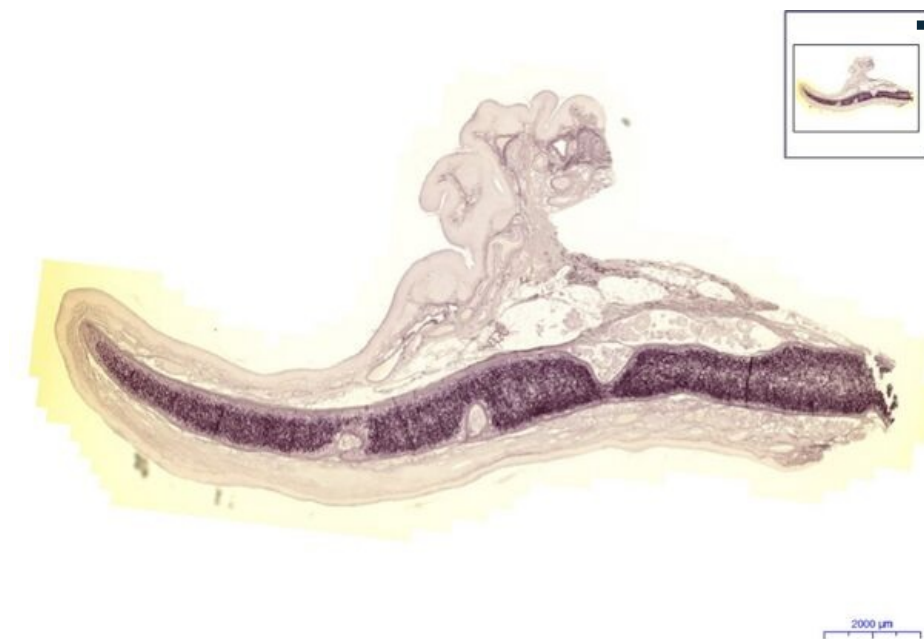


Epiglottis - RF

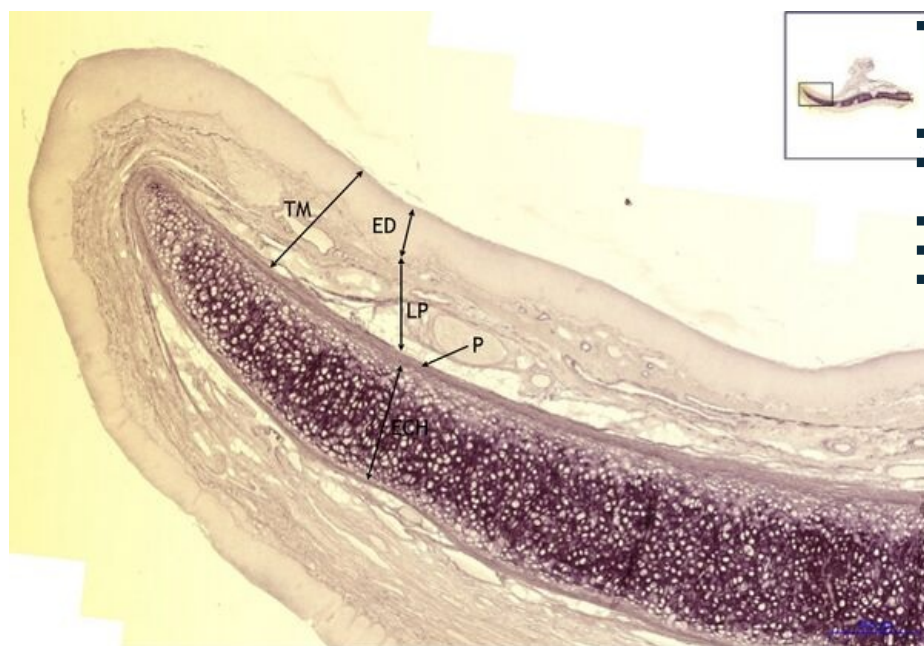
Epiglottis - RF, 0,5x



- **Epiglottis (elastic cartilage):**



Epiglottis - RF, 2x



- **Epiglottis (elastic cartilage):**

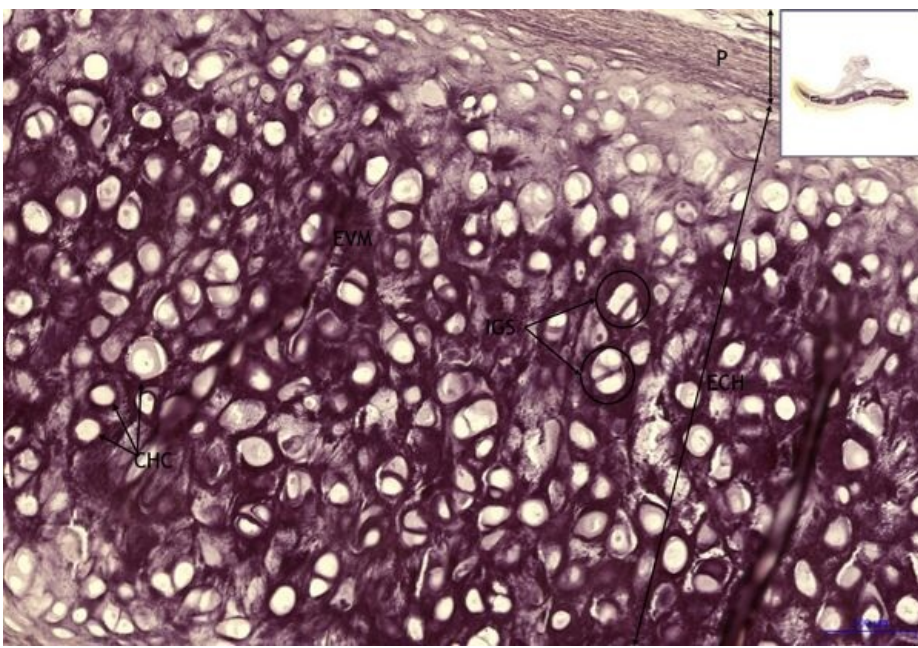
- **1) TM** - tunica mucosa
- **a) ED** - stratified squamous non-keratinized epithelium (lingual side)
- **b) LP** - lamina propria
- **2) P** - perichondrium
- **3) ECH** - elastická chrupavka



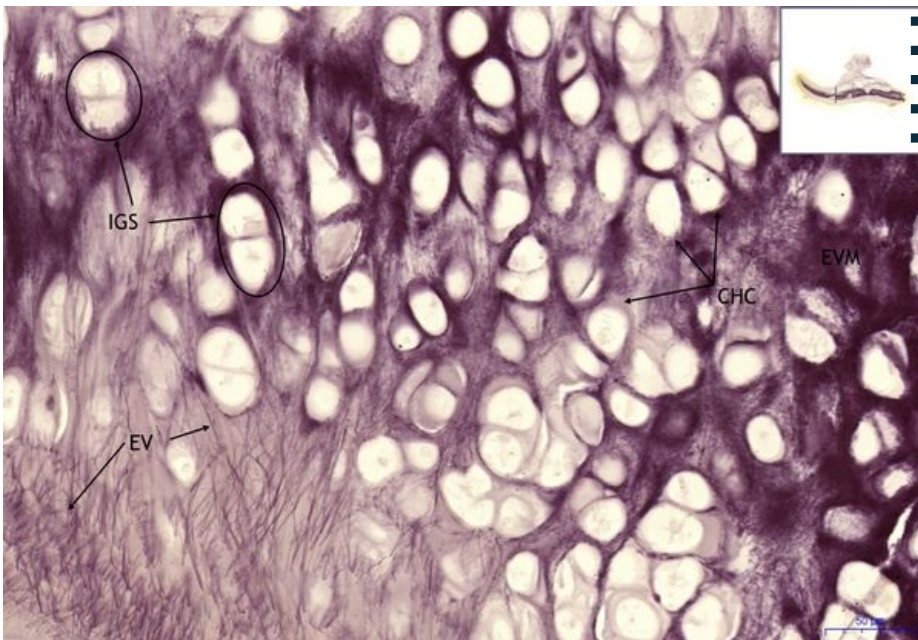
Epiglottis - RF, 10x

- **Epiglottis (elastic cartilage):**

- **1) P** - perichondrium
- **2) ECH** - elastická chrupavka
- **3) IGS** - lacuna with isogenous group
- **4) CHC** - chondrocyte in lacuna
- **5) EVM** - elastic fibers in matrix



Epiglottis - RF, 20x



- **Epiglottis (elastic cartilage):**
- 1) IGS - lacuna with isogenous group
- 2) CHC - chondrocyte in lacuna
- 3) EVM - elastic fibers in matrix
- 4) EV - elastic fibers

Navigation

Connective and supporting tissue

← Slide 25 | List of the slides | Slide 27 →