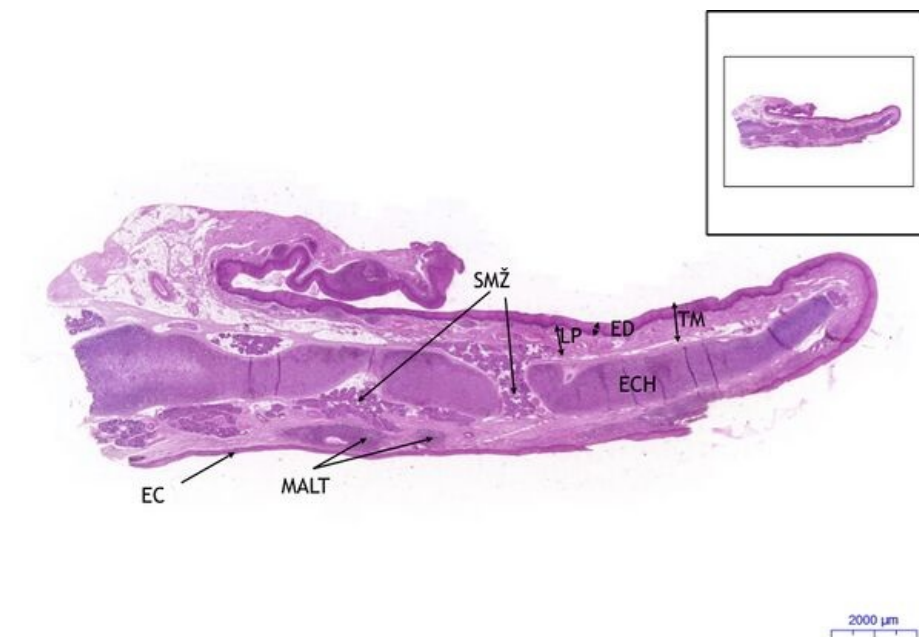


# Epiglottis - HE

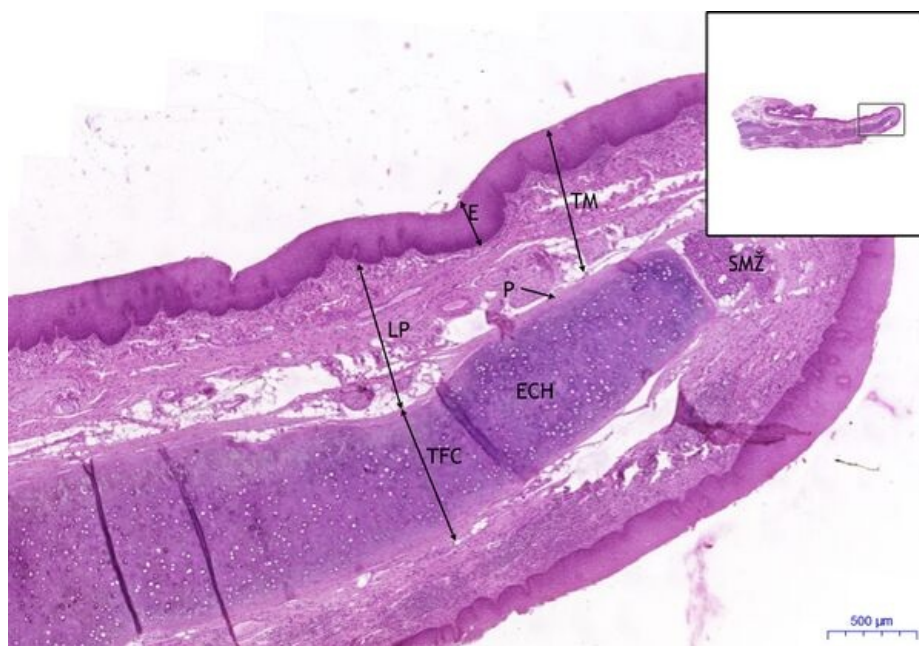
## Epiglottis, HE 0,5x



### Epiglottis:

- 1) **ECH** - elastic cartilage
- 2) **LP** - lamina propria
- a) **SMŽ** - seromucous glands
- b) **MALT** - mucosa associated lymphoid tissue
- 3) **TM** - tunica mucosa
- a) **ED** - stratified squamous epithelium - lingual side (upper)
- b) **EC** - pseudostratified ciliated columnar epithelium - laryngeal side

## Epiglottis, HE 2x



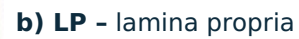
### Epiglottis:

- 1) **TFC** - tunica fibrocartilaginea
- a) **ECH** - elastic cartilage
- b) **P** - perichondrium
- 2) **LP** - lamina propria
- a) **SMŽ** - seromucous glands
- 3) **TM** - tunica mucosa
- a) **ED** - epithelium

## Epiglottis, HE 10x

### Epiglottis:

- 1) **TFC** - tunica fibrocartilaginea
- a) **ECH** - elastic cartilage
- b) **CHC** - chondrocyte
- c) **P** - perichondrium
- 2) **LP** - lamina propria
- a) **SMŽ** - seromucous glands
- b) **TT** - adipose tissue



← Slide D6 | List of the slides | Slide D2 →