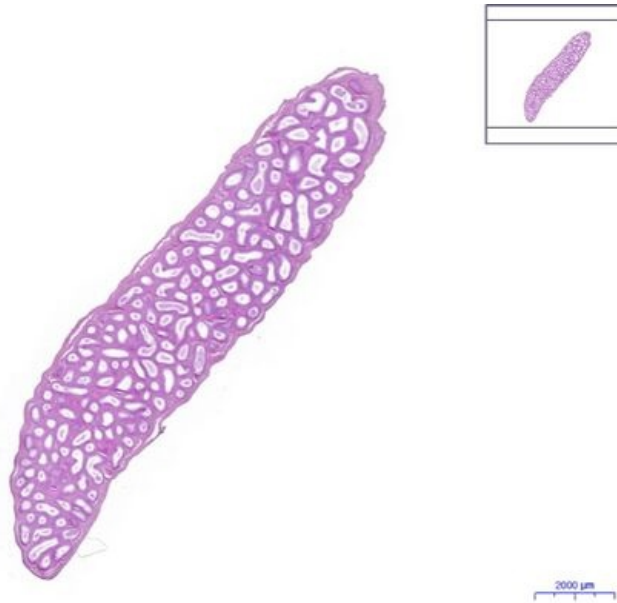


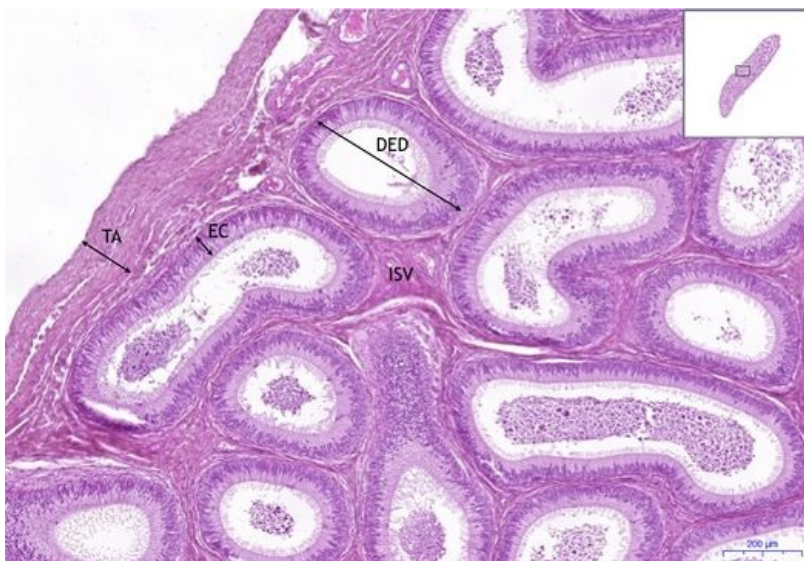
Epididymis - HE

Epididymis, HE, 0,5x



- Epididymis:

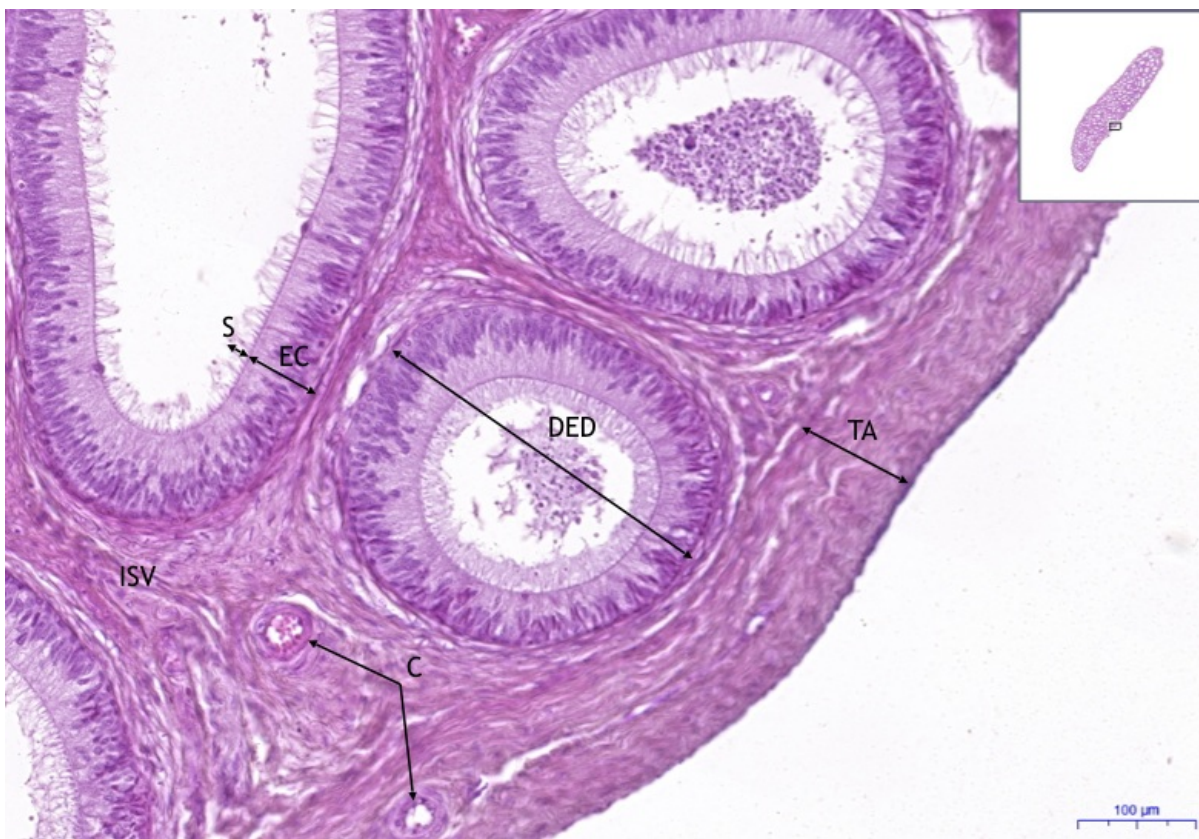
Epididymis, HE, 5x



Epididymis:

- 1) TA - tunica albuginea
- 2) DED - ductus epididymidis
- 3) EC - columnar epithelium
- 4) ISV -interstitial connective tissue

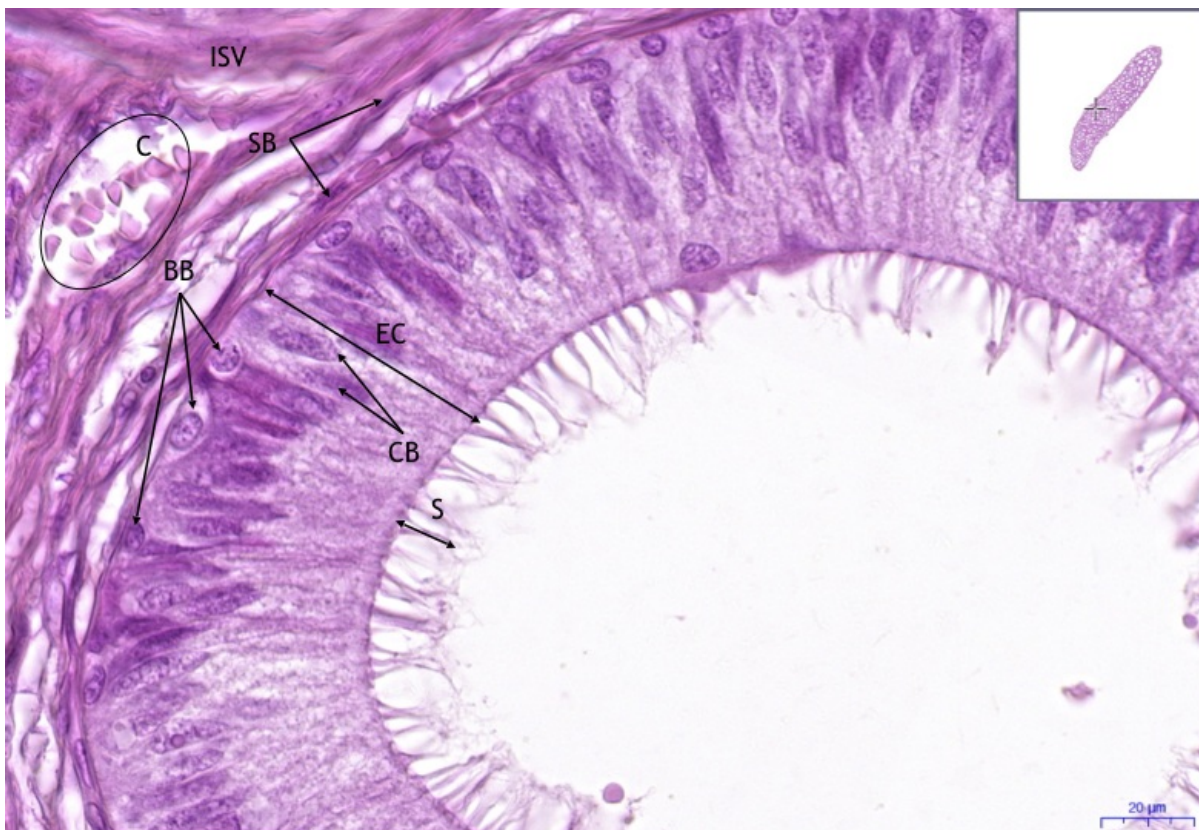
Epididymis, HE, 10x



▪ **Epididymis:**

- 1) **TA** - tunica albuginea
- 2) **DED** - ductus epididymidis
- 3) **EC** - columnar epithelium
- 4) **ISV** - interstitial connective tissue
- 5) **S** - stereocilia/ stereocilia
- 5) **C** - blood vessels

Epididymis, HE, 40x



▪ **Epididymis:**

- 1) **DED** - ductus epididymidis
- 2) **EC** - columnar epithelium

- **a) BB** - bazální buňky/ basal cells
 - **b) CB** - columnar cell
 - **3) ISV** - interstitial connective tissue
 - **4) S** - stereocilia/ stereocilia
 - **5) SB** - muscle cell
 - **6) C** - blood vessels
-

Navigation

Navigation: Digestive system / Digestive tract

← Preparation
M1

| List of
preparations

| Preparation
M3 →