

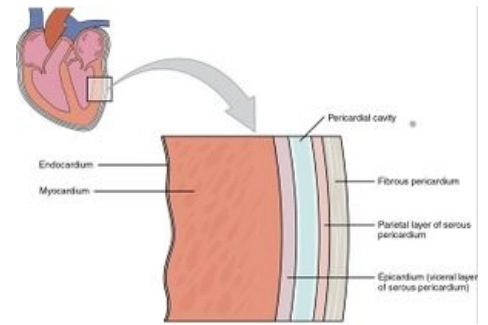
Epicardium

Epicardium (outer layer of the heart wall; tunica serosa) is the mesothelial lining forming the visceral leaf pericardium. It is furthest from the heart cavity, communicating with about 50 ml of pericardial fluid. Coronary arteries takes place in the subepicardium.

Links

Related articles

- [Heart](#)
- [Heart/histology](#)
- [Pericardial puncture](#)



Heart wall layers